



2010 REGIONAL CONFERENCES

We'll Bring the Tools. You Bring the Passion!

Feb. 19
Fresno

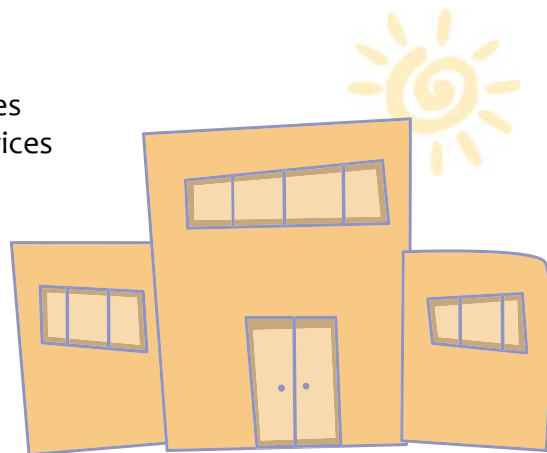
March 9
Los Angeles

April 21
Oakland

The California School Health Centers Association is taking the show on the road in 2010 with three regional conferences designed to draw upon local issues, local resources and potential partnerships. Attendees will network and learn from their colleagues; see how to start and fund a school health center; learn how to create new programs; identify resources; and learn about successful school health center advocacy efforts.

WHO

The conferences will draw an audience that includes health services providers (physical, mental, and oral health); student support services officials; school site leaders; school board members; teachers; and community members interested in school health centers. Expected attendance: 100-150 per conference.



WHAT

Workshops include:

- School health programs and strategies that support student success in school
- Growing school-based nutrition and physical activity programs
- Information-sharing and confidentiality laws
- Building local support by engaging youth, families, school/community champions, and elected officials
- How to start and sustain a school health center, including financing, fund raising and partnerships

WHEN and WHERE

Each conference is one day, 9:30 a.m.–3:30 p.m., and includes lunch, exhibitors, workshops and local networking opportunities.

Friday, Feb. 19

Fresno Co. Office of Education
1111 Van Ness Avenue
Fresno, CA 93721

Tuesday, March 9

The California Endowment
1000 North Alameda Street
Los Angeles, CA 90012

Wednesday, April 21

The California Endowment
1111 Broadway
Oakland, CA 94607

SPONSORSHIP OPPORTUNITIES

Sponsorship levels range from \$300-\$5,000, with opportunities to exhibit at one conference or all three. You may also choose to have a representative in-person or send brochures to be displayed on an exhibit table.

Other benefits include your logo on:

- CSHC's website
- Conference e-communications
- Conference program booklet





2010 REGIONAL CONFERENCES

We'll Bring the Tools. You Bring the Passion!

Feb. 19
Fresno

March 9
Los Angeles

April 21
Oakland

Three one-day regional events featuring:

Workshops, Exhibitors, Lunch, Local Networking and Statewide Insights

Target Audience: Health Care Providers, School District and School Board Officials, School-Based Health Center Staff, Teachers and other Community Members interested in school-based health care services.

Expected attendance: 100-150 per conference

SPONSORSHIP OPPORTUNITIES

Exhibitors: Includes exhibit table and listing in program

\$300 per location

Fresno – Feb. 19

Los Angeles – March 9

Oakland – April 21

(circle desired locations)

Sponsors: Includes exhibit table and recognition at <u>all three</u> locations <i>(circle sponsorship level)</i>	Gold \$5,000+	Silver \$2,500+	Bronze \$1,000+
Exhibit Table (or literature on Display) – all three locations	✓	✓	✓
Advertisement in all three regional conference programs	½ page	¼ page	Bus Card
Post-conference list of all location attendees*	✓	✓	✓
Logo and hyperlink featured on the conference website	✓	✓	
Insert in conference attendee packet (Insert provided by sponsor)	✓	✓	
Logo on the CSHC website and newsletter for the year	✓		
Complimentary registrations	4	3	2

Sponsorship and Exhibitor Agreement

Contact Person _____ Title _____

Organization Name _____

(as you wish it to appear in publications)

Address _____

City _____ State _____ Zip _____

Phone _____ Fax _____

Website _____ E-mail _____

Donation Amount \$ _____

****Please return check (payable to CSHC) and form to CSHC, 660 13th St., # 202, Oakland, CA 94612****

The California School Health Centers Association (CSHC) is pleased to partner with you as we work to put health care where kids are ... in schools. If you have further questions, please contact Kristin Andersen at

510-268-1160 or kandersen@schoolhealthcenters.org.

- California School Health Centers Association is a 501(c)(3) organization.
- Participants have the option of opting out of the post-conference attendee list.*
- CSHC does not endorse our sponsors and reserves the right to exclude sponsors whose products or services are not in keeping with our mission. Logos must be an organization or company logo rather than for a specific product line.