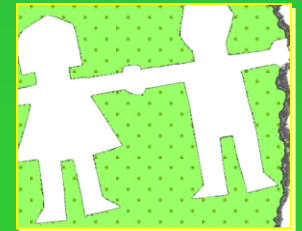
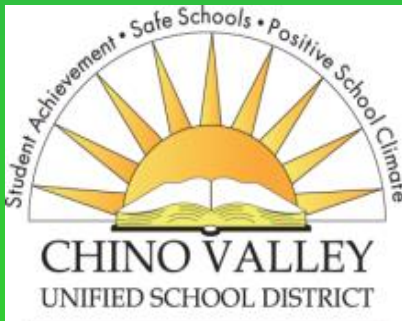


A Coordinated Health Effort. Chino Valley Health & Behavioral Health Centers

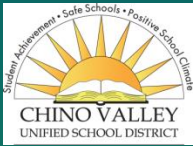
**Laurel Mullally, RN, MSN, FNPc, EdD.
Zahira Orioli, RN, MSN, PNPc**








The Four C's of *Comprehensive Health & Behavioral Health*





Community Collaboration

Partners

- **First 5 SB** 
- **City of Chino** 
- **Chino Valley Y** 
- **Chino Valley Medical Center** 
- **Local Physicians & Dentists support**
- **Arrowhead Regional Medical Center (dental clinic)** 
- **SBC Dept of Behavioral Health** 
- **Focus On Youth Collaborative** 



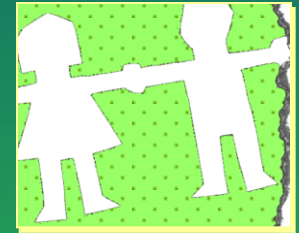


Care Coordination



- (Zahira)
- **Onsite - Medical Services** (Preventative and Episodic), Immunizations, Health Insurance Enrollment via certified assistors, Health Education, Developmental Screenings, Preschool Vision/Hearing screenings

Connectedness with District Sites/Programs



Health

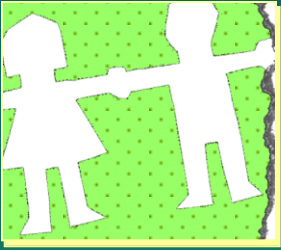
Support Services

**(Child Welfare, Probation,
Special Education, Family
Literacy, Title 1 Pt A
(Poverty),**

Schools

**(Health Offices, Counselors, Psychologists,
Administrator)**

**State Preschools
Infant Toddler Center**



Connectedness

On Site Programs

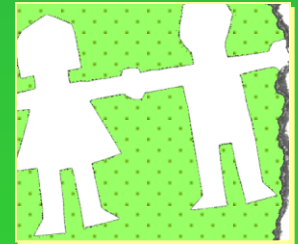
- **Health Center**
- **Behavioral Health Center**
- ***TYKES* Family Resource Center**
- **State Preschools (onsite Children's Center)**
- **Special Education Preschool Assessment Team**
- ***CARE* Close**



Connectedness

On Site Programs

- **McKinney Vento Homeless Education Program**
- **EXCEL Unaccompanied Youth Program**
- **Adult Education Center - parent family support**
- **High School GED and Credit Recovery Classes**





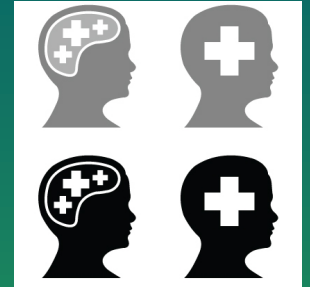
Connectedness

with the Community

- ***Tiny Tots* (city program)- physicals, screenings**
- **Head Start – physicals**
- **Women Infant and Children (WIC) Chino –health exams**
- **Parenting Student Support Program & Infant Toddler Program**
- **Tobacco and Drug Use Prevention Programs**



Behavioral Health



■ **School Based Services:**

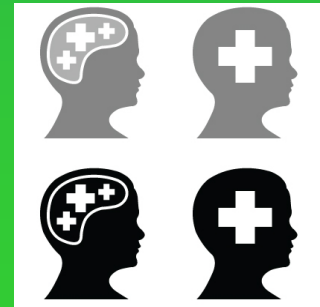
- **Contractor for San Bernardino Co. Department of Behavioral health (Certified Behavioral HealthCenter)**

■ **EPSDT services (Medi-Cal covered, medical necessity)**

- **Locally funded Prevention and Early Intervention behavioral health programs (Elementary)**

Other Behavioral Health Support

- **Contracted counseling (group, individual city of Chino)**
- **Chino Valley *NAMI* Community Education and Support Services**
- **Canyon Ridge Hospital (acute care)**
- **District Crisis Response Team**
- **Local Medical/Behavioral Health Professionals**



COST EFFECT

- **Nurse Practitioners**
- **Licensed Marriage Family Therapists**
- **Part time clerical support**
- **Contracted Services**

