



Alameda County Health Care Services Agency  
School Health Services Coalition

## Behavioral Health Integration in Schools



Tracey Schear, MSW, LCSW & Lisa Warhuus, PhD

### Behavioral Health Integration in Schools

- Who we are
- School-Based Behavioral Health Initiative and Framework
- Strategies for Integrating Practice
- Lessons Learned



## Alameda County, California

- One of the 5 Bay Area Counties in the San Francisco Bay Area
- 737 square miles
- 1.5 Million Residents
- 21% under 18
- 18 School Districts, 389 schools, 213,317 enrolled



## Alameda County, California, Cont.

- Highly diverse: 21% Asian, 31% Latino, 15% African American, 23% White
- 55% Free and Reduced Lunch; 71% minority; 23% English Language Learners
- Largest District is Oakland Unified: 47,000, enrolled; 71%, FRL; 89% minority





Alameda County Health Care Services Agency  
School Health Services Coalition  
LINKING HEALTH AND EDUCATION TO CHANGE LIVES



Building Equity through  
Full Service Community Schools in Alameda County

## The Challenge

Far too many communities in Alameda County suffer from health and education inequities as a result of poor neighborhood conditions and lack of access to quality health care, economic opportunities, and safe, healthy school environments



## Our Vision

We envision a county where families, schools and communities support the healthy development of youth and where children grow up feeling safe, supported and connected



## Our Mission

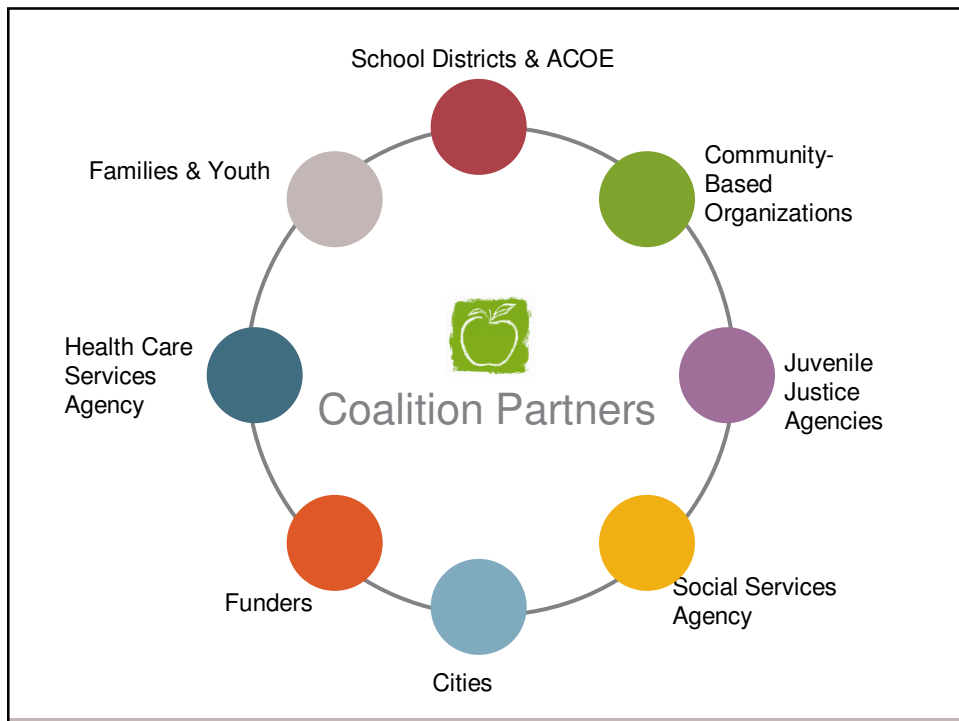
To build communities of care that foster the academic success, health, and well-being of children, youth and families in Alameda County





## Our Goal

To achieve health and educational equity for children and youth in Alameda County



# School Health Services Programs

School Health Centers	School-Based Behavioral Health Initiative	Local Systems Building
<ul style="list-style-type: none"> <li>▶ Service coordination</li> <li>▶ Medical services</li> <li>▶ Mental health services</li> <li>▶ Health education</li> <li>▶ Youth development</li> </ul>	<ul style="list-style-type: none"> <li>▶ Promotion of positive social-emotional development</li> <li>▶ Behavioral health services</li> <li>▶ Family supports</li> <li>▶ Service coordination &amp; capacity building</li> <li>▶ Crisis Response</li> </ul>	<ul style="list-style-type: none"> <li>▶ Align shared vision &amp; framework</li> <li>▶ Maximize &amp; expand services</li> <li>▶ Leverage resources</li> <li>▶ Integrate health and learning supports</li> <li>▶ Develop tailored strategies</li> </ul>
<p>24 School Health Centers</p> <ul style="list-style-type: none"> <li>15 high schools</li> <li>7 middle school</li> <li>1 elementary school</li> <li>1 community college</li> <li>2 new sites in planning</li> <li>8 school districts</li> </ul>	<p>150+ School-based behavioral health school sites</p> <p>9 School district consultation and capacity building programs</p> <p>All School health centers</p>	<p>11 Local initiatives</p> <ul style="list-style-type: none"> <li>Berkeley 2020 Vision</li> <li>Emeryville School Health Initiative</li> <li>Fremont School Health Initiative</li> <li>Hayward Full Service Community School</li> <li>New Haven School Health Initiative</li> <li>Newark School Health Initiative</li> <li>Oakland Community Schools Initiative</li> <li>San Leandro School Health Services</li> <li>San Lorenzo School Health Initiative</li> <li>Tri-City FSCSN Initiative</li> <li>Tri-Valley School Health Initiative</li> </ul>

## Alameda County School-Based Behavioral Health Initiative

In 2009 Alameda County Health Care Services Agency Launched the School-Based Behavioral Health Initiative co-led by Behavioral Healthcare Services Agency and the School Health Services Coalition



## Mission of the SBBH Initiative

To strengthen and expand school-based behavioral health practice, finance, evaluation, and policy in Alameda County



## SBBH Initiative Partners

- Behavioral Health Care Services (Co-convener)
- School Health Services Coalition (Co-convener)
- Alameda County School Districts
- Community Service Providers
- Alameda County School-Based Health Centers
- University of CA San Francisco, Institute for Health Policy Studies



By convening and coordinating the initiative, BHCS & SHS have strengthened

- fund development
- training and capacity building
- service access
- evaluation
- accountability



SBBH programs are being implemented at over 150 sites in Alameda County

- Schools
- School health centers
- School districts



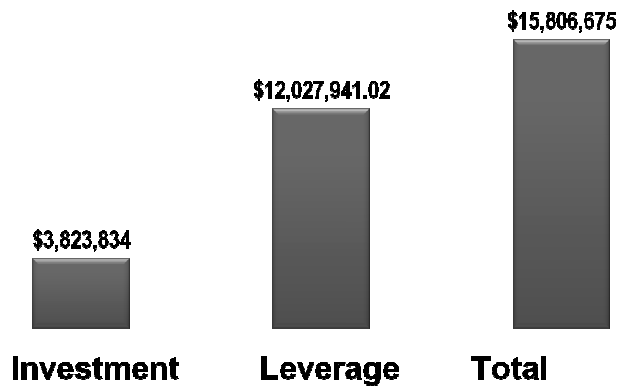


## SBBH Initiative Programs

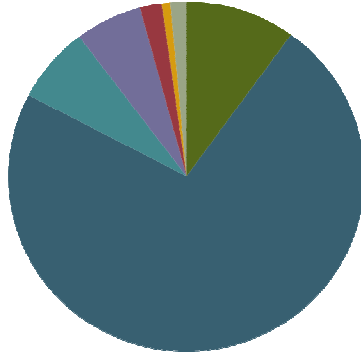
- Our Kids Our Families
- Site-Based EPSDT
- School District Consultation & Capacity Building



## Total Investment 2011-2012



## Total Investment By Funding Stream



TMSF + EPSDT:	\$11,495,000
TMSF + MAA:	\$1,574,750
MHSA PEI + Districts:	\$1,114,570
Measure A + MAA	\$958.100
Measure Y + MAA:	\$313,905
OUSD + MAA:	\$228,800
Atlantic + MAA:	\$121,550
TOTAL:	\$15,806,675



## A Key SBBHI Goal

“Create a collective vision and framework for a continuum of school-based behavioral health services in Alameda County”



## SBBH Initiative Framework

- Creates a common reference from which educators, service providers, funders, and evaluators can collaborate
- Provides a training and technical assistance tool for current, new, and potential partners



## SBBH Initiative Framework

- Provides a foundation for schools, districts, and providers to target improvements in existing school-based behavioral health systems
- Functions as a basis for evaluation improvement efforts



## Through our framework we are driven to

- Create school environments that foster healthy social-emotional development for all students
- Support inform, and engage teachers, staff, and parents



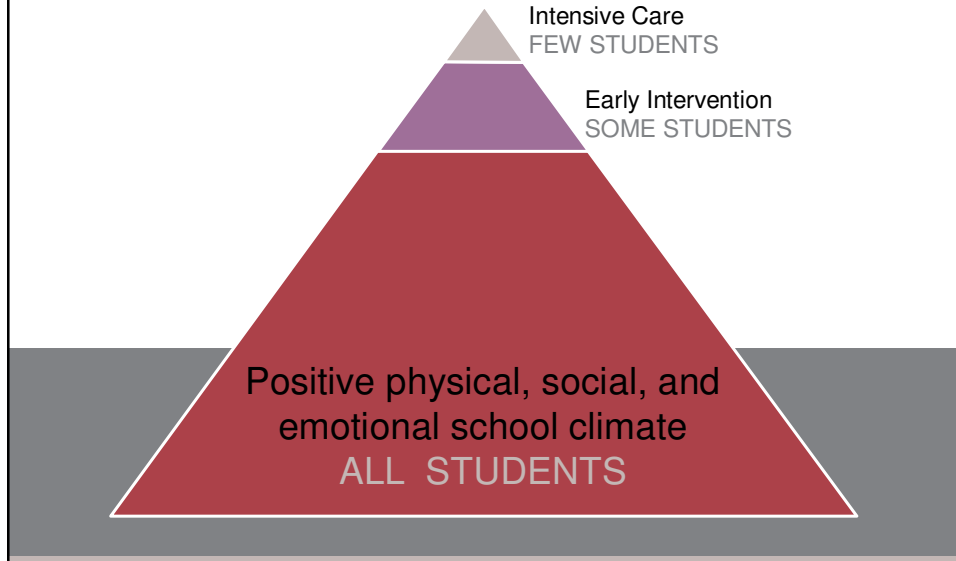
## Through our Framework we are driven to (cont.)

- Provide prevention services to at-risk students through mental health consultation and early intervention
- Ensure that students with intensive behavioral health needs receive appropriate care





## Continuum of Behavioral Health Supports

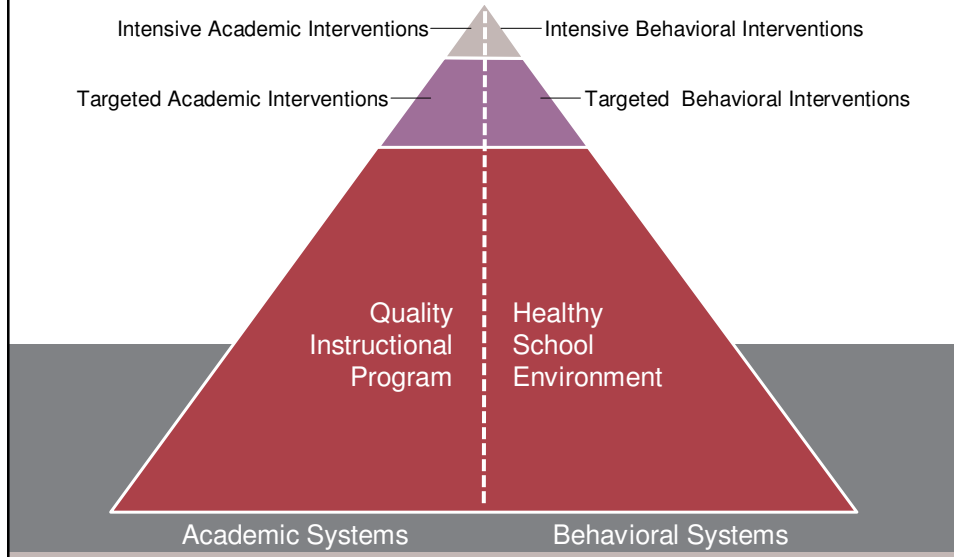


## Alignment with Education

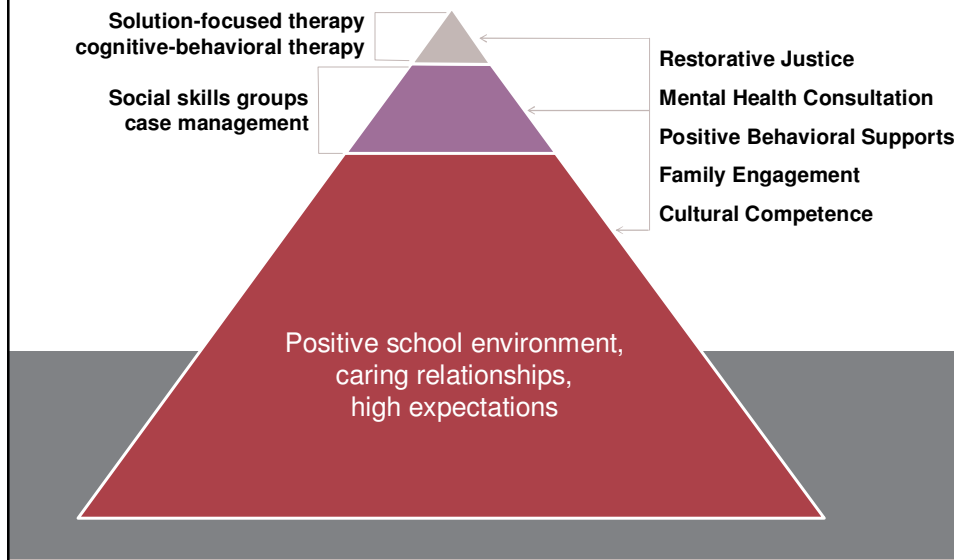
- Response to Intervention (RTI)
- Providing a necessary resource
- Integrating with school staff



# Response to Intervention



# School-Based Behavioral Health Practice



## Provider Focus

- Teacher and staff support
- Whole school support
- Student support
- Family support
- Crisis support



## Educator Focus

- Administrative leadership
- Participation of teachers and staff
- Systematic prevention/promotion effort
- Provider integration
- Systems coordination



## Strategies for Integrating Practice

- Local systems building
- Innovative financing
- Training and capacity building
- Readiness assessment
- Accountability



## Local Systems Building

Developing local initiatives and providing policy-level leadership for effective school health practices.





## Local Systems Building Examples

- Tri-Valley School Health Initiative
- Fremont School Health Initiative
- San Leandro School Health Initiative
- San Lorenzo School Health Initiative



## Innovative Financing

Strategic blending of funding streams, including those available for prevention



## Training and Capacity Building

- Learning community providers
- Special trainings and conferences
- Technical assistance
- Consultation training institute



## Readiness Assessment

- Assess needs, strengths and capacity prior to starting services
- Periodic assessment to prioritize supports



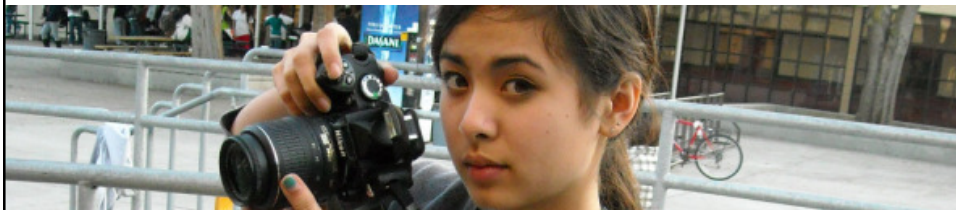
## Accountability

- Master agreements with districts
- Contract expectations
- Data collection and evaluation
- Match dollars requirement



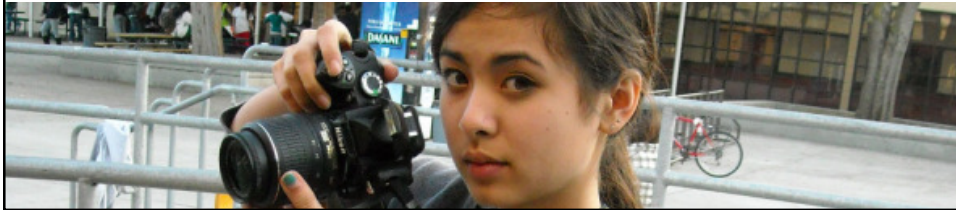
## Lessons Learned

- Honor the work
- Support the champions
- Know what you need
- Learn each others' languages
- Take the time

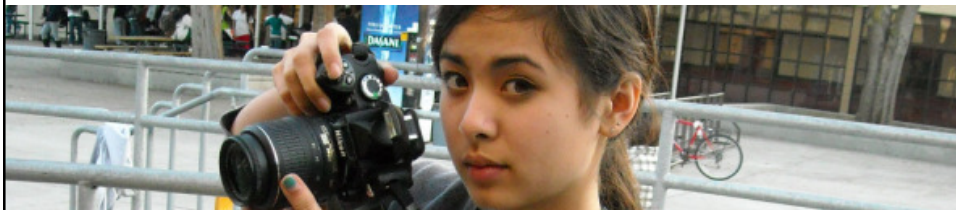


## Future Directions

- Evaluation Redesign
- Connecting with Full Services Community Schools planning and development
- Implementing mental health consultation training institute
- School Climate Initiative
- Expanded internship program



Questions?





## Contact

Tracey Schear

[Tracey.schear@acgov.org](mailto:Tracey.schear@acgov.org)

Lisa Warhuus

[lisa.warhuus@acgov.org](mailto:lisa.warhuus@acgov.org)

