

A 2020 LOOK AT SCHOOL HEALTH POLICY IN CALIFORNIA



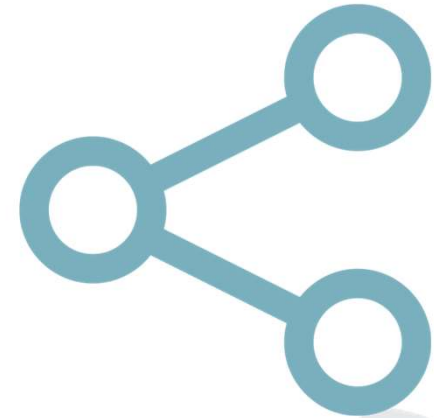


For audio, dial
(415)-655-0003

Access code
667 200 440



The webinar is
being recorded



Supporting
materials will be
shared



Lisa Eisenberg

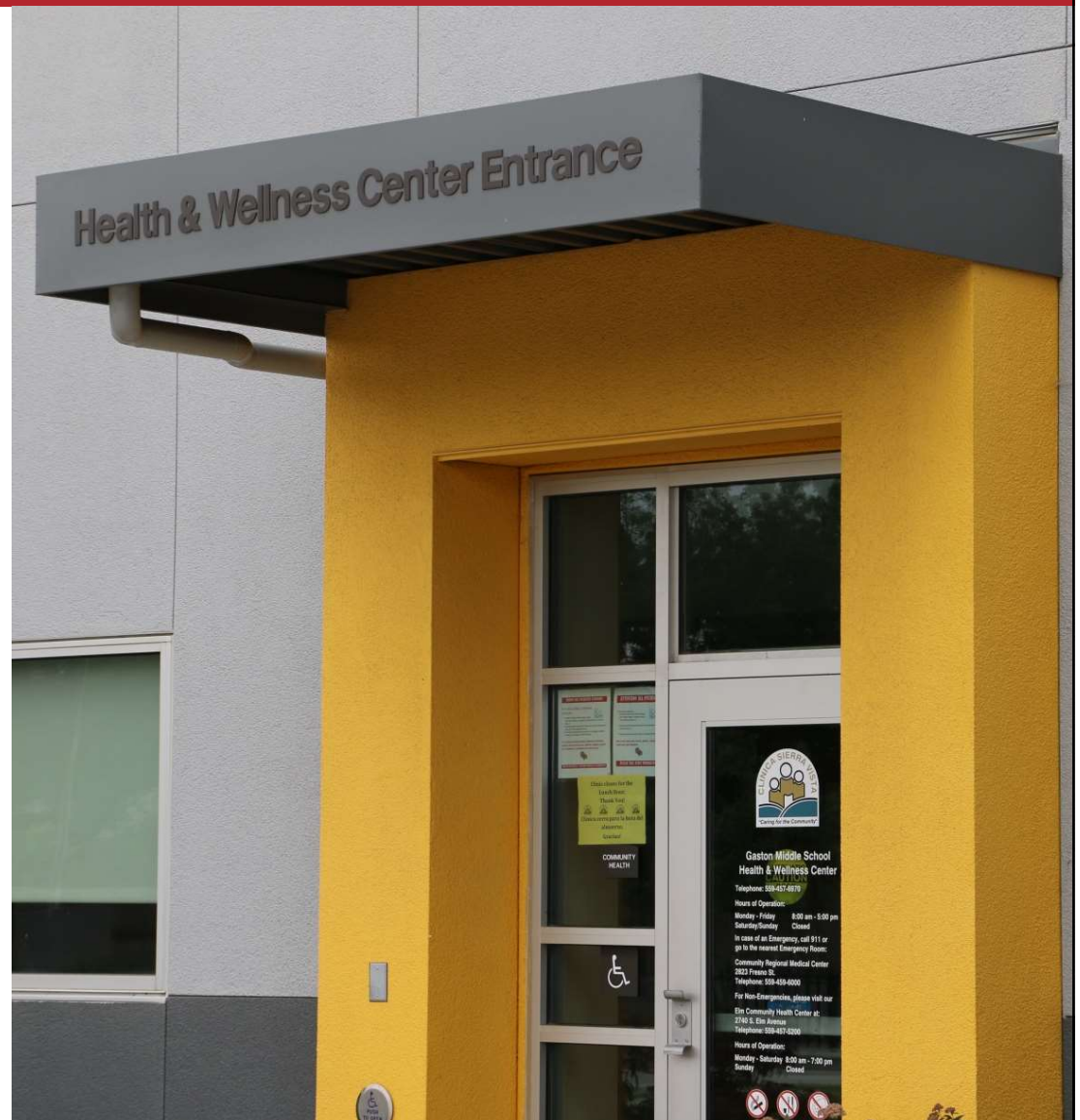
Policy Director, California
School-Based Health Alliance

Putting Health Care in Schools

The California School-Based Health Alliance is the statewide non-profit organization dedicated to **improving the health & academic success** of children & youth by **advancing health services in schools.**

Learn more:

schoolhealthcenters.org



2020

California School-Based Health Conference

A Shared Vision for Healthy Students

May 14-15 | Sacramento, CA | bit.ly/CSHAconference



CALIFORNIA
SCHOOL-BASED
HEALTH ALLIANCE

Putting Health Care Where Kids Are



SAVE \$50 WITH EARLY BIRD REGISTRATION

Members save even more

INTRODUCTIONS

Name, organization,
location, and if you have
a school health policy
question you would like
covered today

GOV'S BUDGET PROPOSAL

- \$300 million for Community Schools grants
- New tax on e-cigarettes
 - For administration, enforcement, youth prevention, and healthcare workforce
- ~\$200 million for Prop 64 Youth Subaccount
 - 75% to CDE for subsidized childcare
 - 20% to DHCS for competitive grant program
- \$11.5 million for Farm to School grant program

NEXT: Hearings, May Revise, Legislature passes budget



OTHER STATE INITIATIVES & POLICIES

Medi-Cal Healthier California for All (formerly CalAIM)



- Federal Medicaid waiver negotiation
- “To implement broad delivery system, program and payment reform across the Medi-Cal program”
- <https://www.dhcs.ca.gov/provgovpart/Pages/medi-calhealthiercaforall.aspx>

OTHER STATE INITIATIVES & POLICIES

ACEs Aware

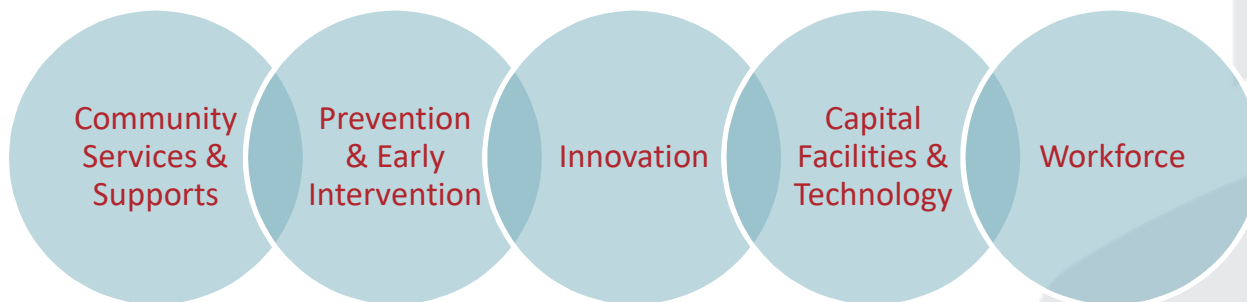
- Initiative between DHCS and State Surgeon General
- To increase trauma screening for Medi-Cal patients in primary care settings
- \$29 supplemental payment to Medi-Cal providers
 - PEARLS tool for pediatric patients
- After July 1, 2020, providers must complete a training to continue receiving supplemental payment
- <https://www.acesaware.org>




OTHER STATE INITIATIVES & POLICIES

Mental Health Services Act (MHSA) reform

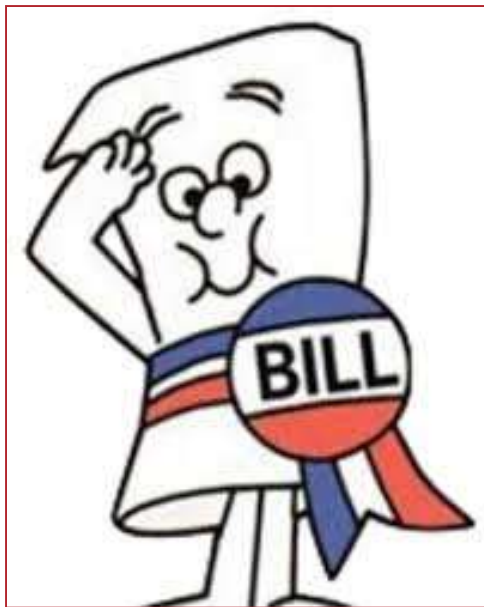
- Prop 63 passed in 2004, county funding to supplemental mental health system, prevention & early intervention priority
- Problem: recent audits found a lot of unspent funds
- In Gov's Budget: Preliminary desires to reform MHSA to support issues related to substance use, homelessness, criminal justice systems, and early intervention for youth



OTHER STATE INITIATIVES & POLICIES

- Mental Health Student Support Services Act
 - \$75 million grant program to fund partnerships between county behavioral health departments and LEAs to increase school mental health services.
 - School Medi-Cal Expansion
 - Pending SPA 15-021
 - Expands school Medi-Cal billing programs to support services for general education students
 - Tentatively finalized July 2020
- 

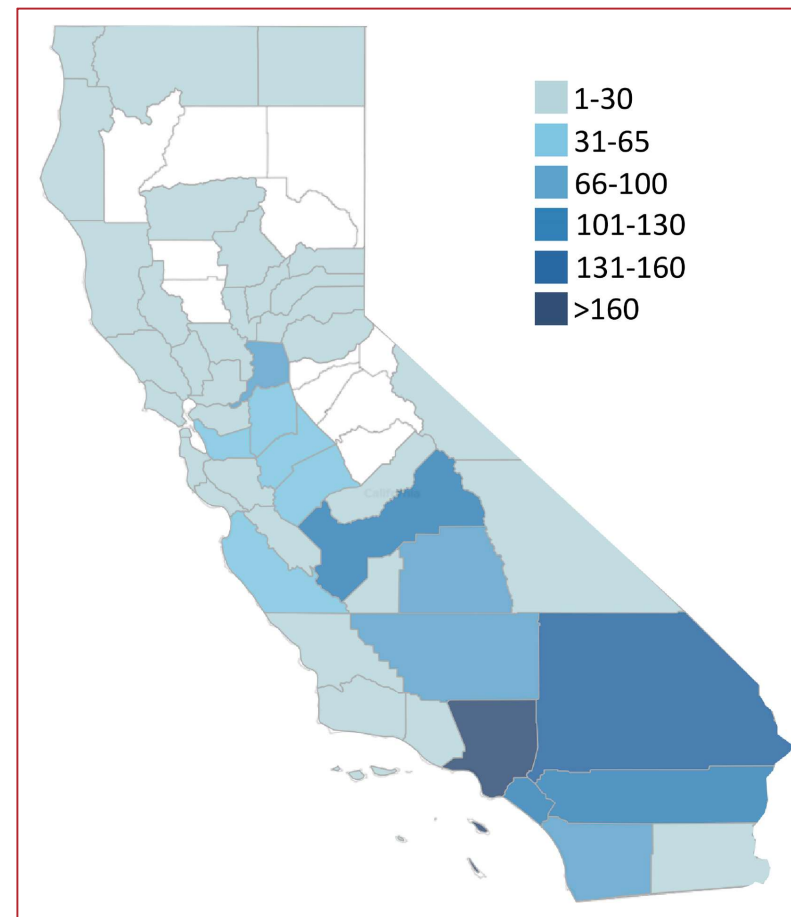
NEW LAWS



- SB 419 (Skinner)
 - Beginning July 2020, schools can no longer suspend students in grades K-8 for “willful defiance”
 - The change for grades 6-8 will only be for a five-year “trial period”
- AB 48 (O’Donnell)
 - School Facilities Bond, on March ballot

CSHA 2020 POLICY PRIORITIES

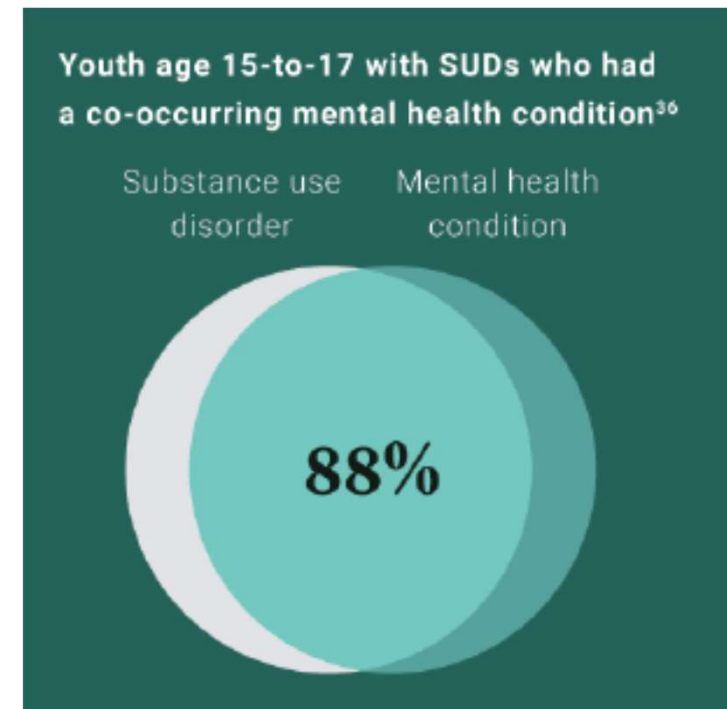
1. Pursue one-time funding in the state budget for school-based health center (SBHC) planning and construction.



From 2016: Schools that would benefit from an SBHC

CSHA 2020 POLICY PRIORITIES

2. Increase resources for and reduce barriers to implementing school-based behavioral health services.
3. Advocate for improved substance use prevention and early-intervention in schools through continued investment from Prop 64 and decreased punitive discipline policies.



CSHA 2020 POLICY PRIORITIES



4. Support increased coordination between state departments (CDPH, CDE, and DHCS) to support school-based health services.



5. Support state investment in the Community Schools model and ensure that resources are allocated to integrate comprehensive health services as part of the model.

QUESTIONS? COMMENTS?

What are your policy priorities?

What problems/ challenges face your SBHC/school health program(s)?

Is there something missing from CSHA's policy agenda?

STAY CONNECTED

 schoolhealthcenters.org

 info@schoolhealthcenters.org

 [schoolhealthcenters](https://www.facebook.com/schoolhealthcenters)

 [sbh4ca](https://twitter.com/sbh4ca)

 [sbh4ca](https://www.instagram.com/sbh4ca)



Gracias

謝謝

Thank you

Cảm ơn

Salamat

Lisa Eisenberg

510-268-1033

leisenberg@schoolhealthcenters.org