

Electronic Health Record Adoption in SBHCs

Sue Sirlin, CPEHR

Director, HIT Consulting Services

May 15, 2012



Advancing Healthcare
Improving Health

Learning Objectives

- Understand the EHR Adoption Roadmap
- Identify specific EHR requirements needed to support an SBHC
- Discuss communication strategies for articulating SBHC needs to organization leadership, IT staff and EHR vendors
- Think about how to move your organization further along in the EHR Adoption process



Introductions

- **Outlook Associates**

- Health IT and Process Improvement Consulting
 - Founded in 1991
 - Headquartered in Irvine, CA
 - Consulting division of Qualis Health, a non-profit Quality Improvement Organization (QIO) and REC for Washington and Idaho
- Founding Goal
 - Improve healthcare through:
 - The effective use of systems and technology
 - The availability of reliable data on which to base sound medical and business decisions
- Commitment to Safety Net Providers and Payers



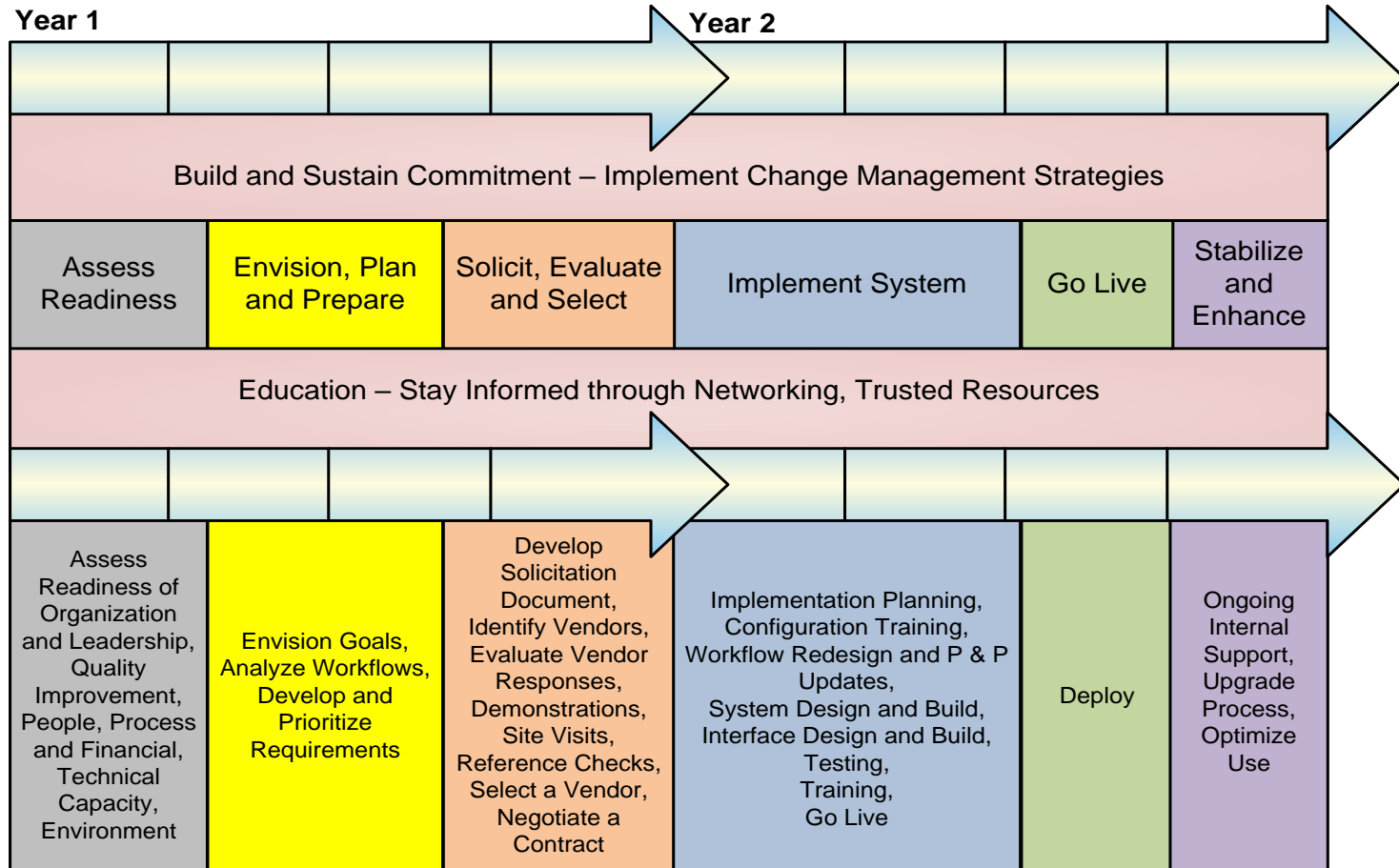
CSHC EHR Adoption Project

Objective:

Provide technical assistance to school-based health centers (SBHCs) to assist them in moving forward with implementation of an electronic health record (EHR) and, if eligible, receiving federal incentive payments.



EHR Adoption Roadmap



Assess Readiness

Assess
Readiness of
Organization
and Leadership,
Quality
Improvement,
People, Process
and Financial,
Technical
Capacity,
Environment



- Make sure everyone is on the same page of the same book
- Establish an EHR Committee and make sure the SBHC is represented



Envision, Plan and Prepare



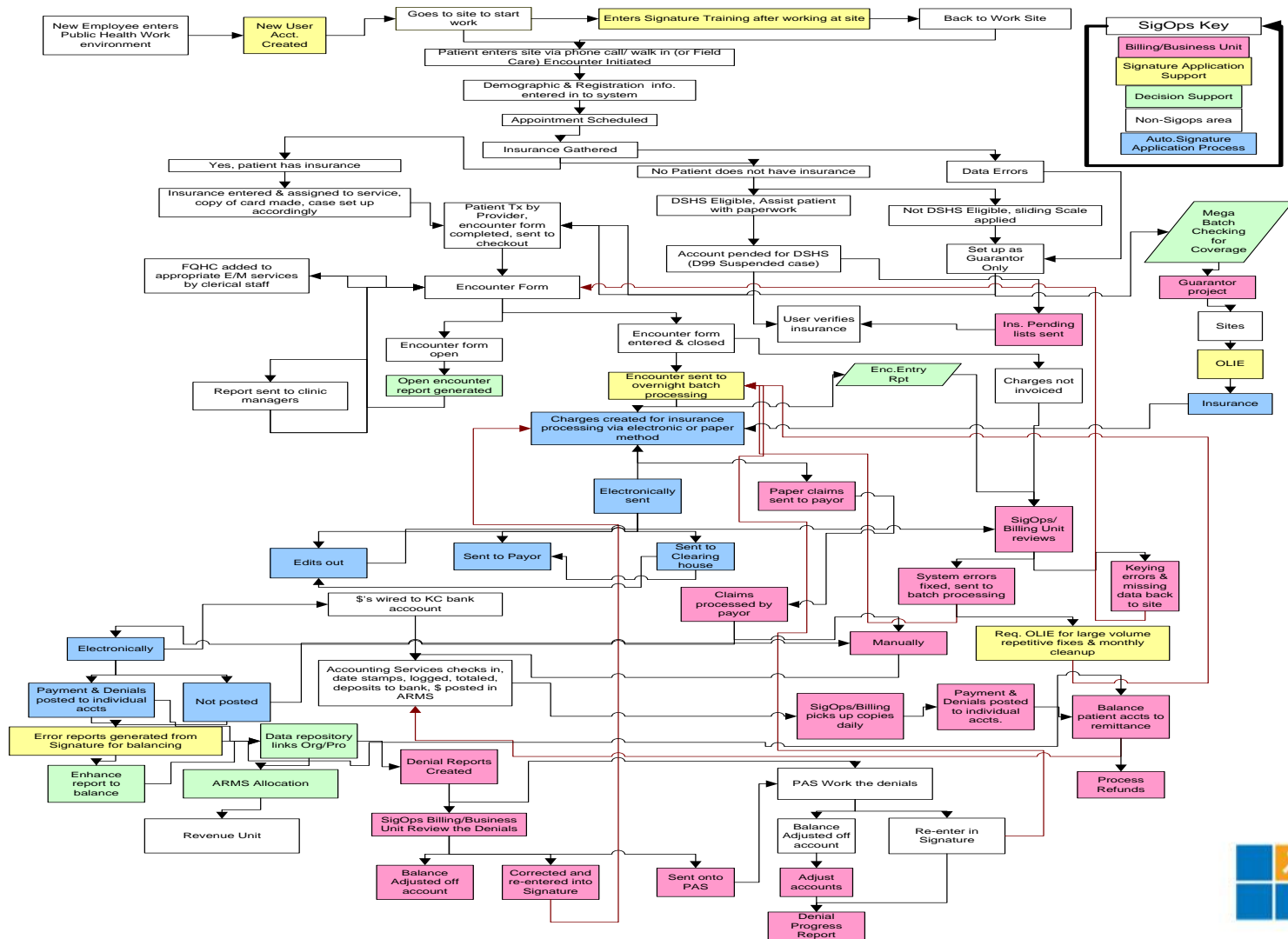
Envision Goals,
Analyze Workflows,
Develop and
Prioritize
Requirements



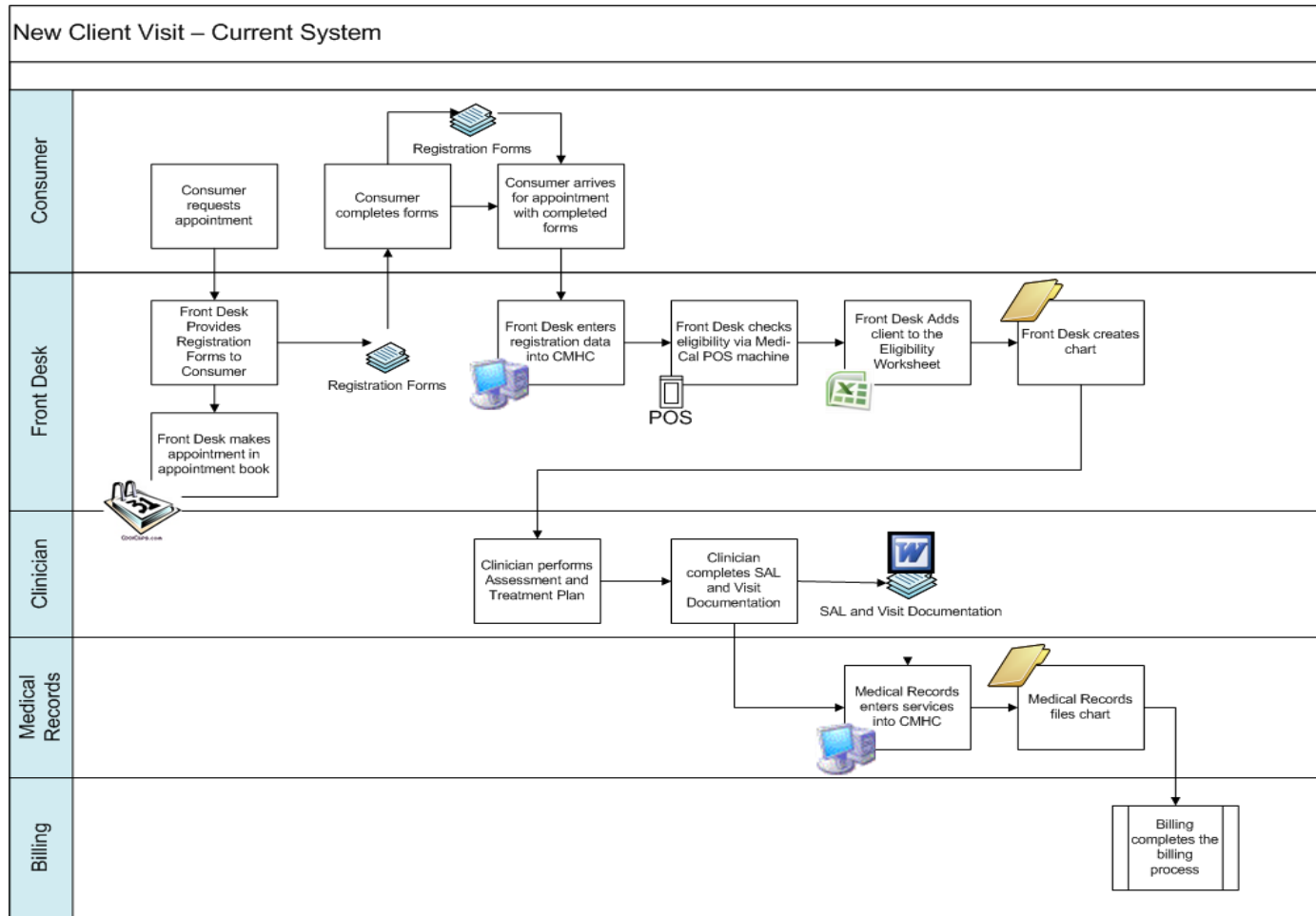
- **Goals:**
Know and articulate why you are doing this
- **Workflow:**
Do not automate inefficient manual processes
- **Requirements:**
Know what you need and what is most important



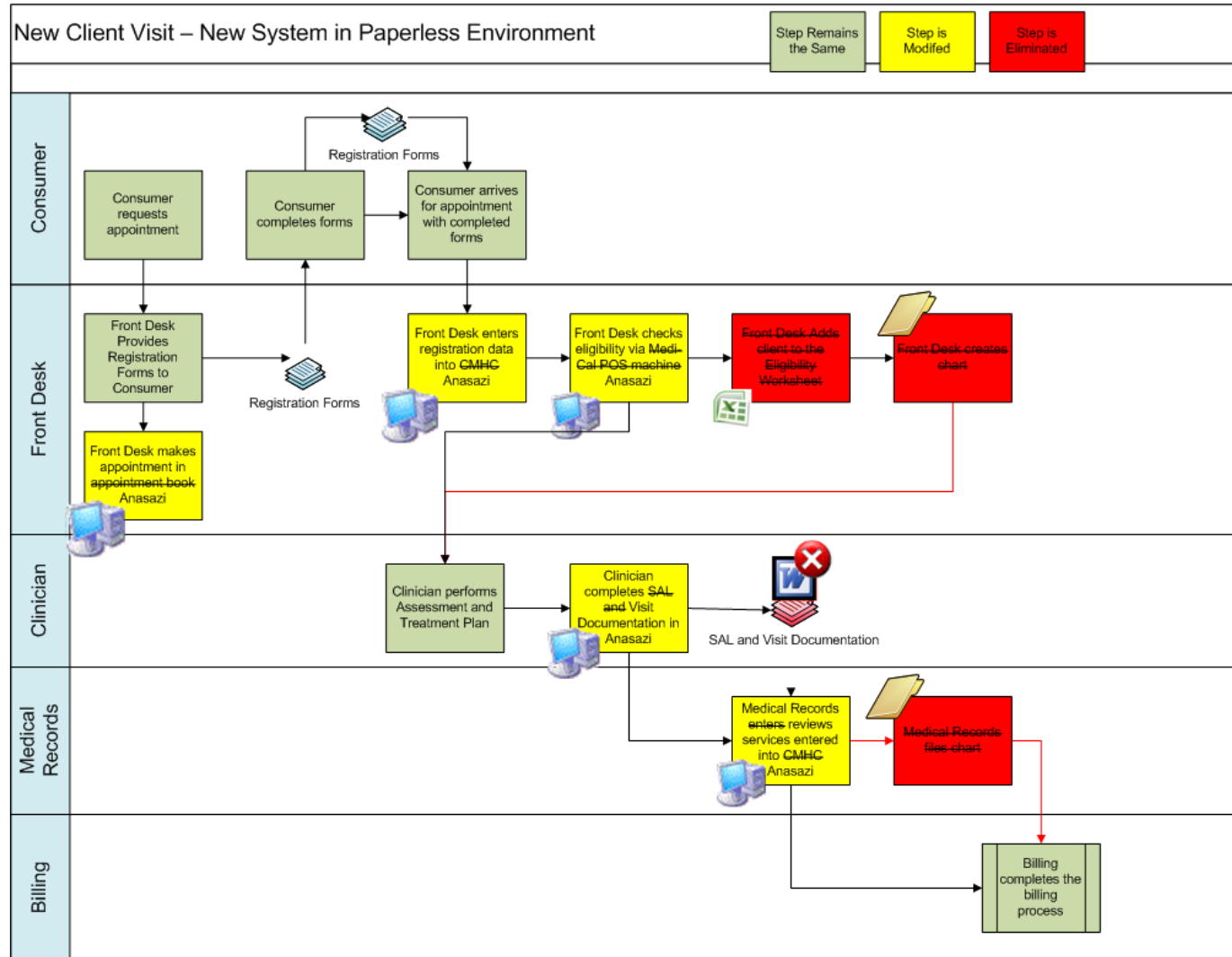
Workflow



Sample Current State Workflow



Sample Future State Workflow



EHR Requirements for SBHCs

- General EHR Functionality
 - Clinical History Documentation
 - Medical Hx, family, and social history
 - Allergies
 - Current medications
 - Clinical Visit/Encounter Documentation
 - Vital signs, including height, weight, calculated BMI
 - Well visit and sick visit templates
 - SOAP notes
 - Problem lists via ICD-9 or free text
 - Medication Management
 - ePrescribing – Electronic transmission of prescriptions to pharmacies and information about other filled prescriptions
 - Alerts – Drug/Drug, Drug/Allergy, Drug/Disease



EHR Requirements for SBHCs

- General EHR Functionality (continued)
 - Orders and Results Management
 - Online lab, diagnostic testing, screening order and results entry
 - Interfaces – Labs, medical devices
 - Referrals, including referral tracking
 - Charge Capture
 - Online generation of charges for services
 - Send to billing system
 - Workflow Management
 - Provider desktop/dashboard
 - Tickler system with tasks
 - Communication with other EHR users
 - Reporting
 - Most systems can report on any data collected discretely
 - Some can do population management (i.e., look at all my patients with asthma that have not been seen in the last xx months)



EHR Requirements for SBHCs

- General EHR Functionality (continued)
 - Scanning
 - Scan consents, outside reports, insurance cards
 - Elimination of paper charts
 - Patient Portal
 - Patient/parent access to information
 - Provider can decide what can and cannot be seen



EHR Requirements for SBHCs

- Pediatric Content
 - Well child exam templates
 - Sick visit templates for common pediatric complaints
 - Immunization management
 - Interface to immunization registries
 - Growth charts
 - Asthma flow charts/action plans
 - Weight-base dose calculators
 - School and camp forms management
 - Mark documents/services as confidential for adolescents
 - Consent management



EHR Requirements for SBHCs

SBHC Requirement	EHR Configuration
Collection of information about student status, such as grade level, home room teacher	User-defined fields Templates
Health education, smoking cessation, mental health, nutrition programs	Templates
Groups for the above programs	Group management functionality – add patients to group, document for group as a whole once, then add detail for individuals
Visit disposition, such as sent back to class, sent home	Add field to visit templates
Risk assessments	Templates
Dental services	May need EDR (electronic dental record)



Solicit, Evaluate, and Select

Develop
Solicitation
Document,
Identify Vendors,
Evaluate Vendor
Responses,
Demonstrations,
Site Visits,
Reference Checks,
Select a Vendor,
Negotiate a
Contract



- **Demonstrations:**
Scripted demos, NOT
Sales demos
- **Reference Checks:**
Conduct reference calls,
as many as possible
- **Site Visits:**
Conduct Site Visits, as
many as possible; not
just during the selection
process



Implement



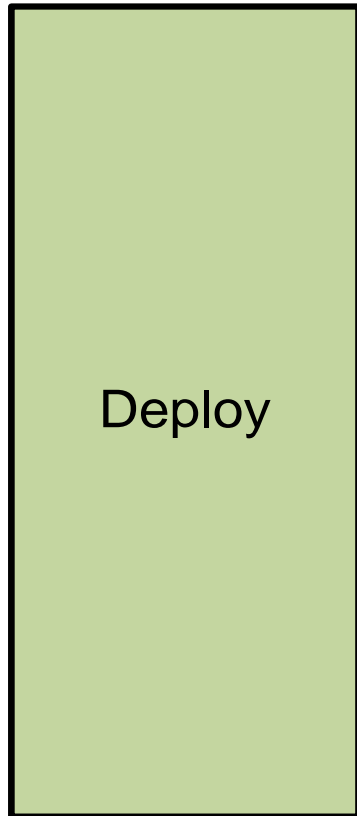
Implementation Planning,
Configuration Training,
Workflow Redesign and P & P
Updates,
System Design and Build,
Interface Design and Build,
Testing,
Training,
Go Live



- Build
- **Test**
- Train



Go Live



- Provide appropriate resources to Go Live

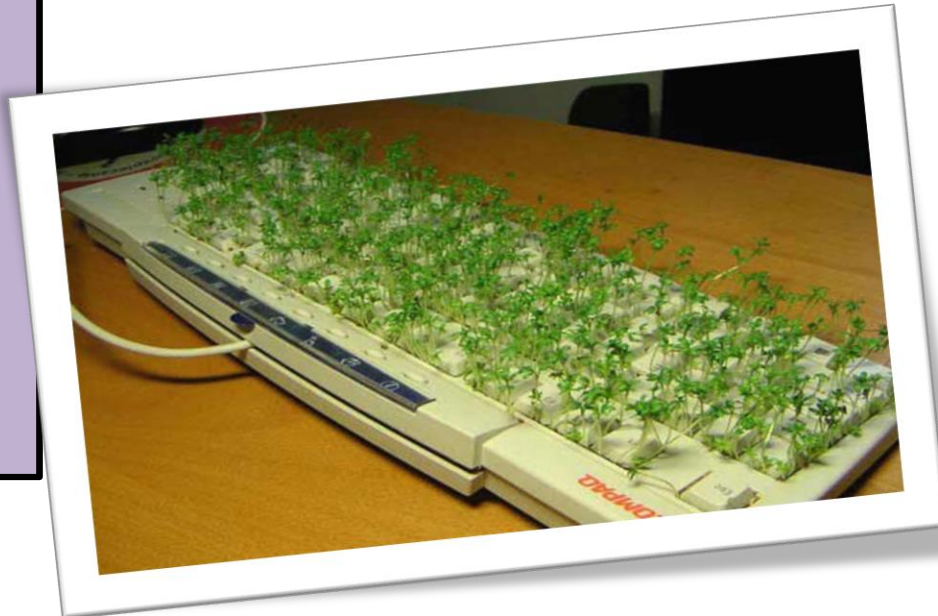


Optimize

Ongoing
Internal
Support,
Upgrade
Process,
Optimize
Use

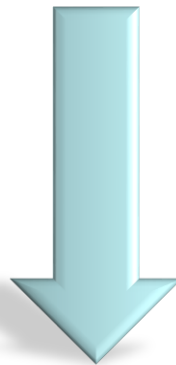


- Regular re-evaluation of system use
- EHR Forever Committee



Build and Sustain Commitment

Build and Sustain Commitment – Implement Change Management Strategies



- Same Page, Same Book
- Address change management from the beginning



Change Management

$$\text{Vision} + \text{Skills} + \text{Incentives} + \text{Resources} + \text{Action Plan} = \text{Change}$$

$$\text{Skills} + \text{Incentives} + \text{Resources} + \text{Action Plan} = \text{Confusion}$$

$$\text{Vision} + \text{Incentives} + \text{Resources} + \text{Action Plan} = \text{Anxiety}$$

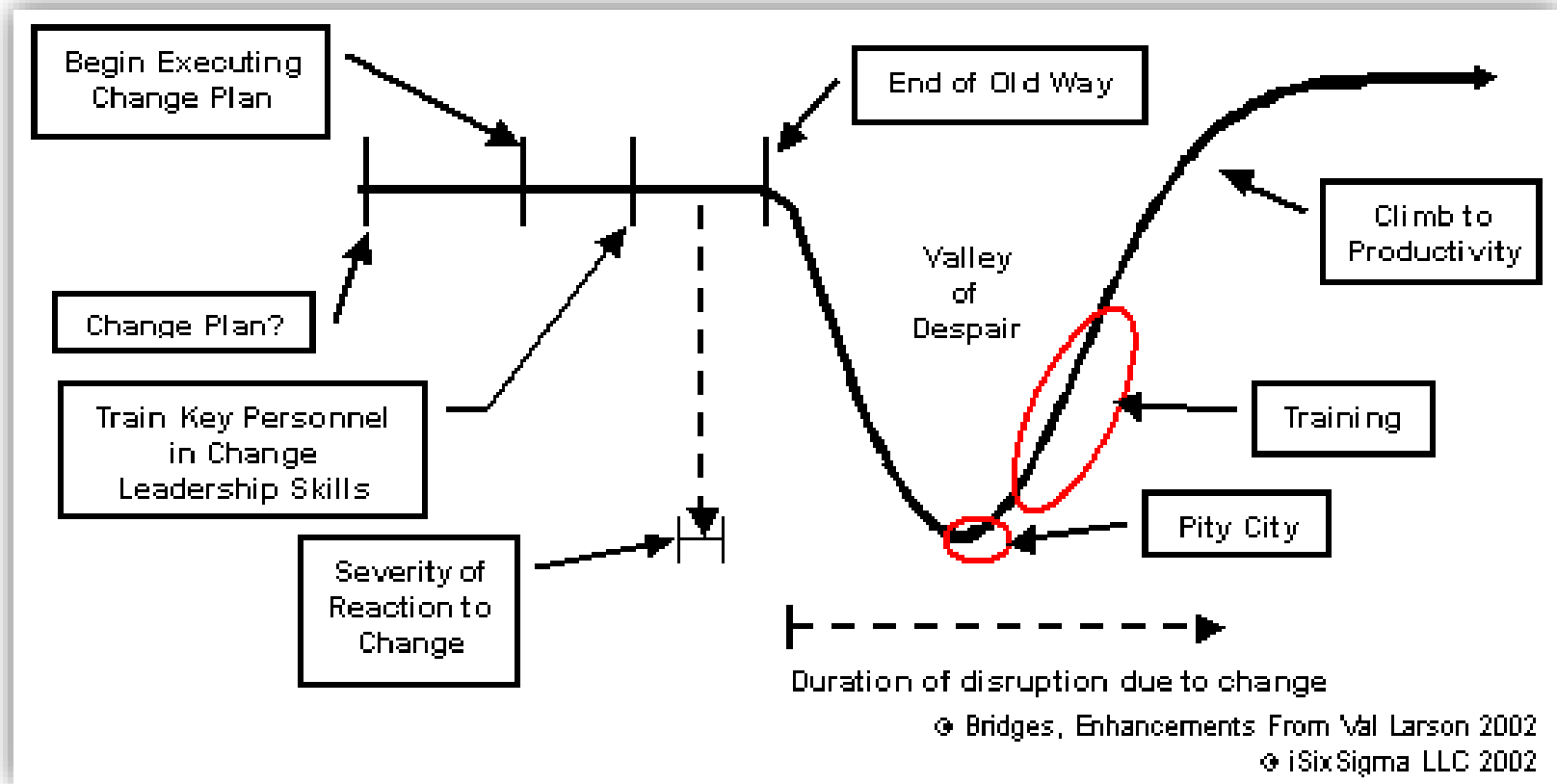
$$\text{Vision} + \text{Skills} + \text{Resources} + \text{Action Plan} = \text{Resistance}$$

$$\text{Vision} + \text{Skills} + \text{Incentives} + \text{Action Plan} = \text{Frustration}$$

$$\text{Vision} + \text{Skills} + \text{Incentives} + \text{Resources} = \text{Treadmill}$$

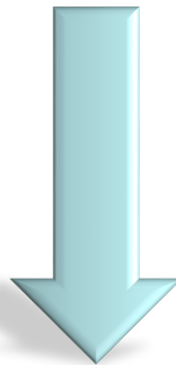


The Change Management Lifecycle



Education

Education – Stay Informed through Networking, Trusted Resources



Networking

- CSHC
- CPCA

References

- Websites
- Publications



Communication Tools and Strategies

- How do I communicate my EHR needs to my organization leadership, my IT staff, and EHR vendors?
 - EHR Committee
 - Articulate needs/requirements
 - Look for commonalities rather than differences



Advancing Adoption

- How can I move my organization forward in the EHR Adoption Process?
 - Next Steps
 - Barriers



Questions?



Sue Sirlin, CPEHR
HIT Consulting Director
Outlook Associates, LLC, a division of
Qualis Health
Office: 888-432-0261 x 2045
ssirlin@outlook-associates.com

