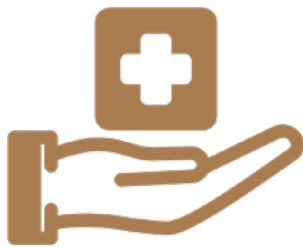
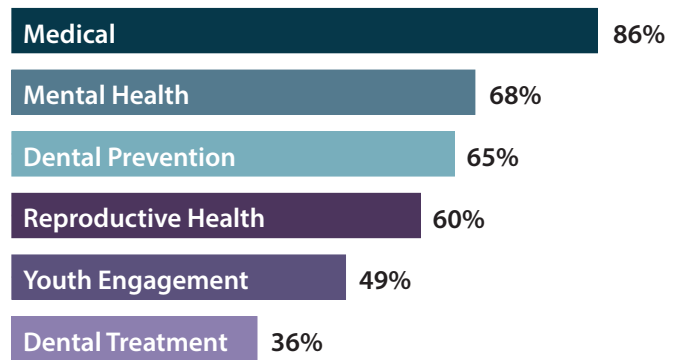


School-based health centers (SBHCs) are an innovative way to help ensure that children and youth have access to health care and do well in school. They are located on or very near school campuses and offer services in a place that is familiar, trusted, age-appropriate, and convenient for students and families. SBHCs are supported by many different communities because they respond to local needs. In 2000, there were 108 SBHCs; today, there are 293 and growing!

286,000
students have
access to SBHCs
& high-quality
health services



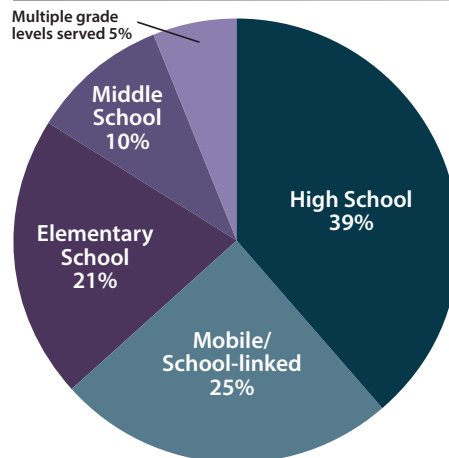
Services Provided by SBHCs



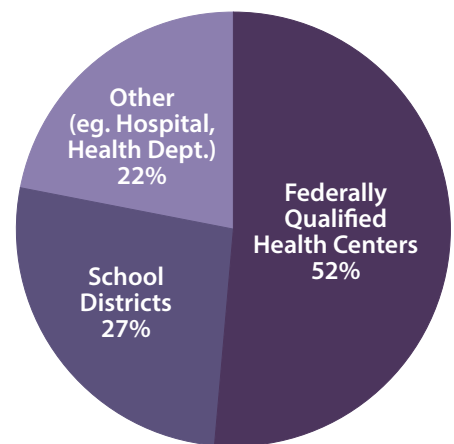
83% of SBHCs serve
broader
community

17% of SBHCs serve
students only

School Levels Served



Who Operates SBHCs



How SBHCs Are Financed

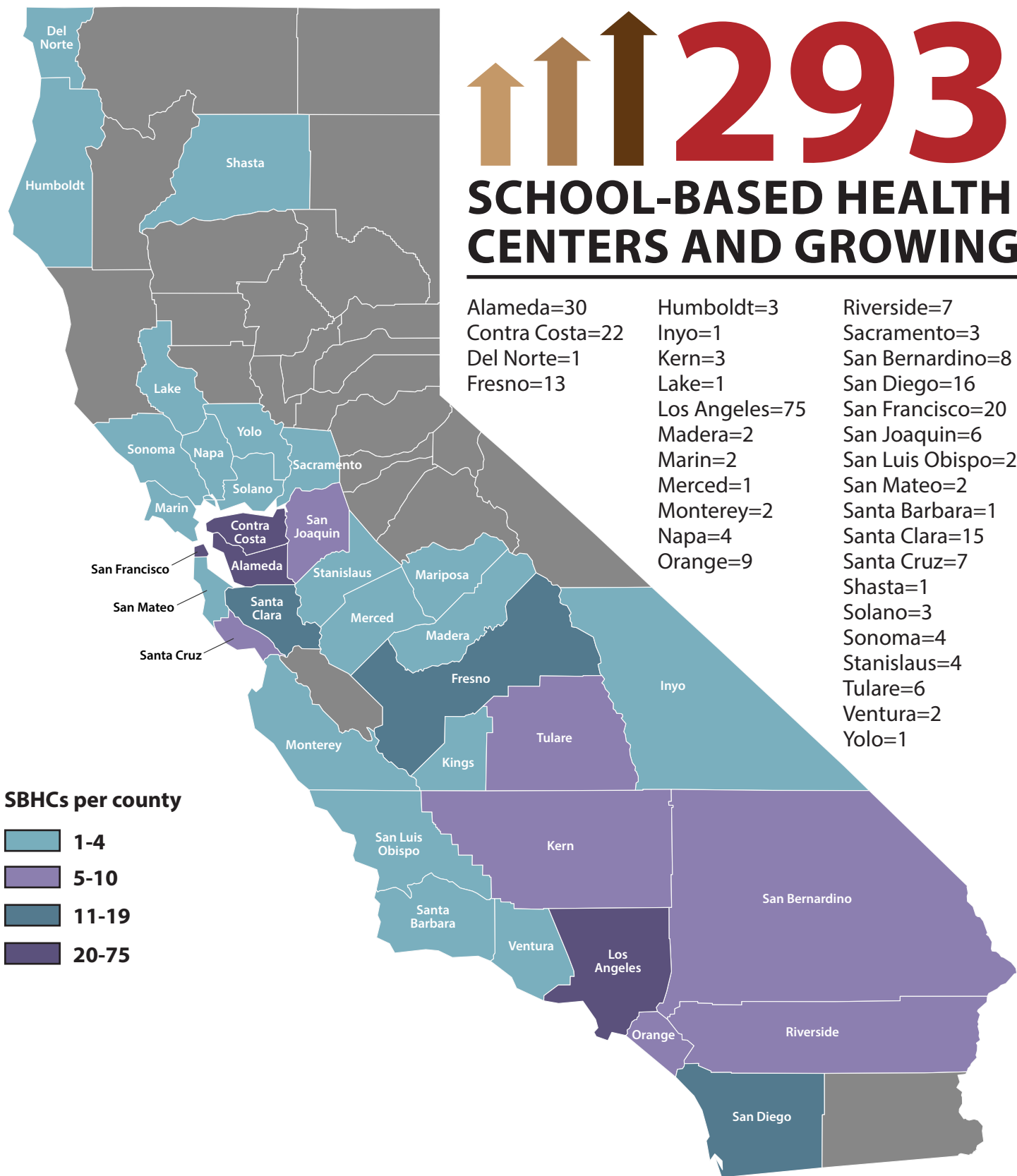


- **Reimbursement** through Medi-Cal, health plans, Family PACT, Child Health and Disability Prevention Program (CHDP), and contracts for mental health services
- **School district contributions** and in-kind support of space, nurses, utilities, and custodial services
- **Sponsoring agency contributions** or subsidies
- **Government and private grants**

293

SCHOOL-BASED HEALTH CENTERS AND GROWING

Alameda=30	Humboldt=3	Riverside=7
Contra Costa=22	Inyo=1	Sacramento=3
Del Norte=1	Kern=3	San Bernardino=8
Fresno=13	Lake=1	San Diego=16
	Los Angeles=75	San Francisco=20
	Madera=2	San Joaquin=6
	Marin=2	San Luis Obispo=2
	Merced=1	San Mateo=2
	Monterey=2	Santa Barbara=1
	Napa=4	Santa Clara=15
	Orange=9	Santa Cruz=7
		Shasta=1
		Solano=3
		Sonoma=4
		Stanislaus=4
		Tulare=6
		Ventura=2
		Yolo=1



SBHCs per county

