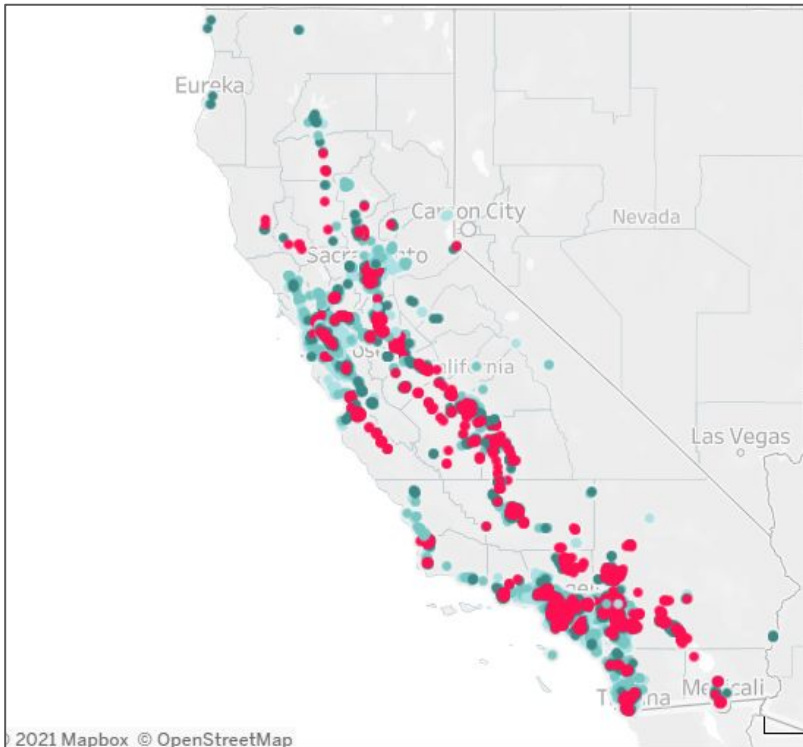


# Guide: Using the Student Health Index Dashboard



The California School-Based Health Alliance (CSHA) is focused on supporting more school-based health centers (SBHCs) across the state. The aim of this mapping tool is to provide evidence to assess the need for SBHCs to serve California students equitably.

The Student Health Index uses relevant data that already exists from schools and communities to summarize, in a standardized way, the relative need for additional health care access in schools.

## The Student Health Index is:

- Place-based and provides information for all included public schools in California using school-level and geographic data.
- Comprised of 12 indicators that are available for at least 99% of the included schools.
- Standardized and uses percentiles to assign scores of 1-4 for each of the indicators in each school. The percentile represents a relative score.
- Combines the component scores into a Need Score, while double weighting all school-level data, and uses percentiles to assign each a score of 1-4.

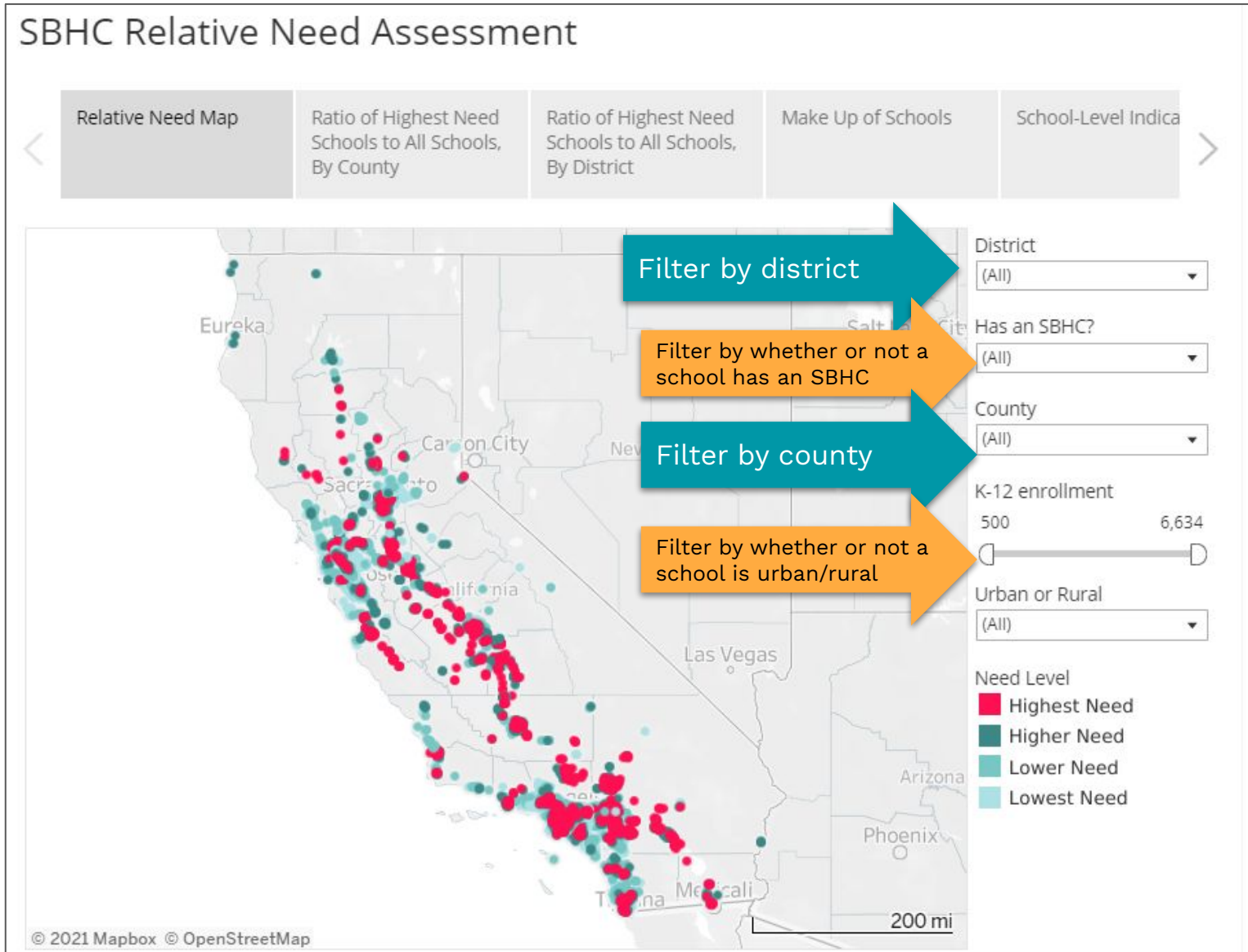
The Dashboard provides a new way to look at health and educational data in concert. It is unique because:

- It is a public, interactive mapping tool that spans all large K-12 public schools in the state of California, and allows users to view, download and explore school-level data on health, socioeconomic and school demographics and outcomes
- It enables the retrieval, visualization, exploration and download of uniformly defined data across California for conditions, school characteristics and risk factors that can be improved through access to school-based health care and have been associated with impacts on educational outcomes.
- It can be used by CSHA as well as school staff, state legislatures, parents, and the general public to assess opportunities for expanding school-based health care access in California.

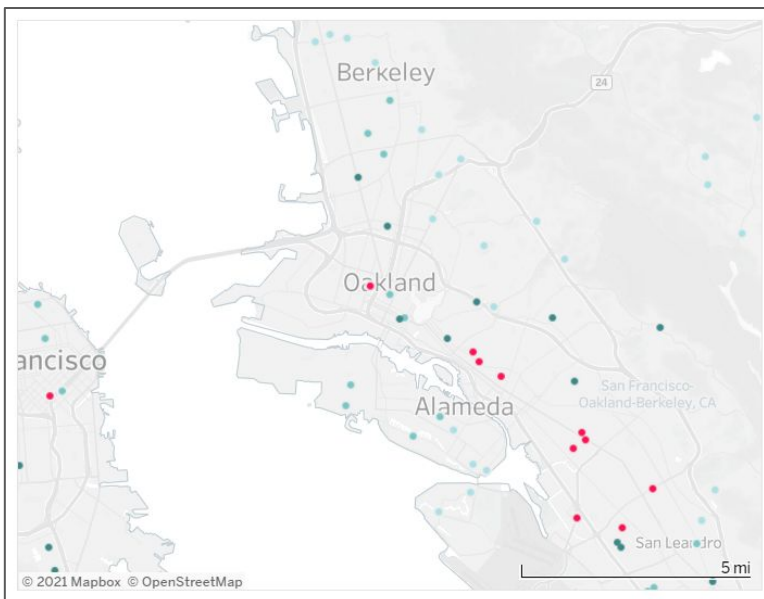
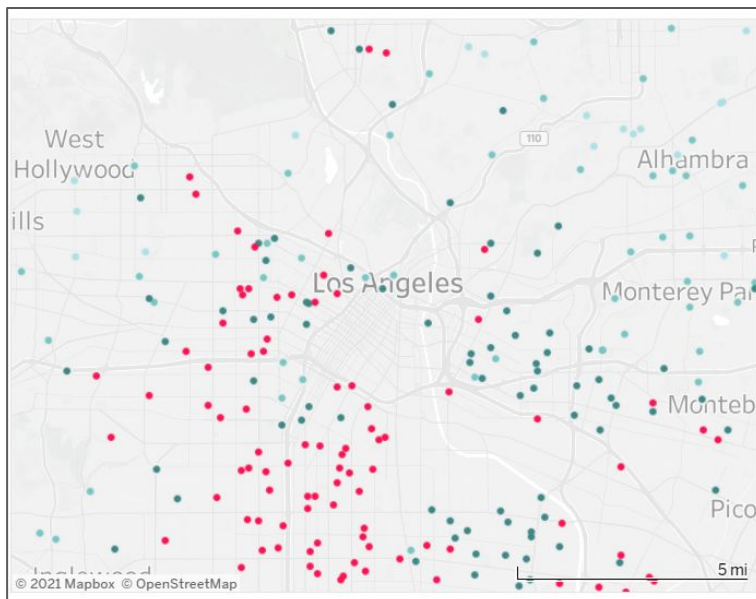
More information on the creation of the Student Health Index and Mapping Tool can be found in the following report: Nienstedt, Liliame (2021). Student Health Index: Advancing the Health & Education Equity of California's Students Through School-Based Health Centers. Prepared for the California School-Based Health Alliance.

# Guide: Using the Student Health Index Dashboard

The dashboard allows users to only view schools based on enrollment, county or district, as well as by Need Score, by clicking on the cards on the right hand side.

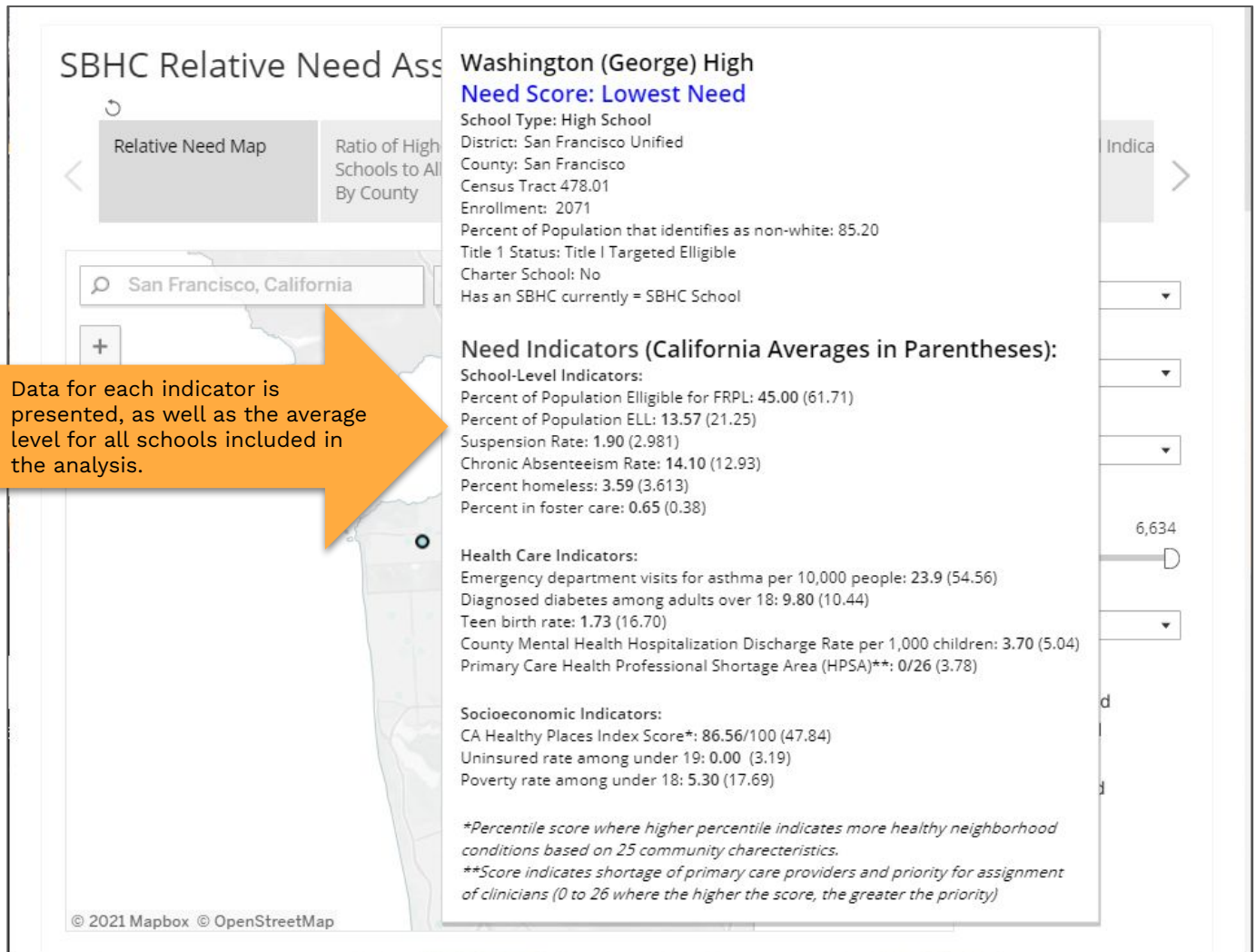


The dashboard also allows users to zoom in and out to focus on certain areas, using the search bar or their mouse.

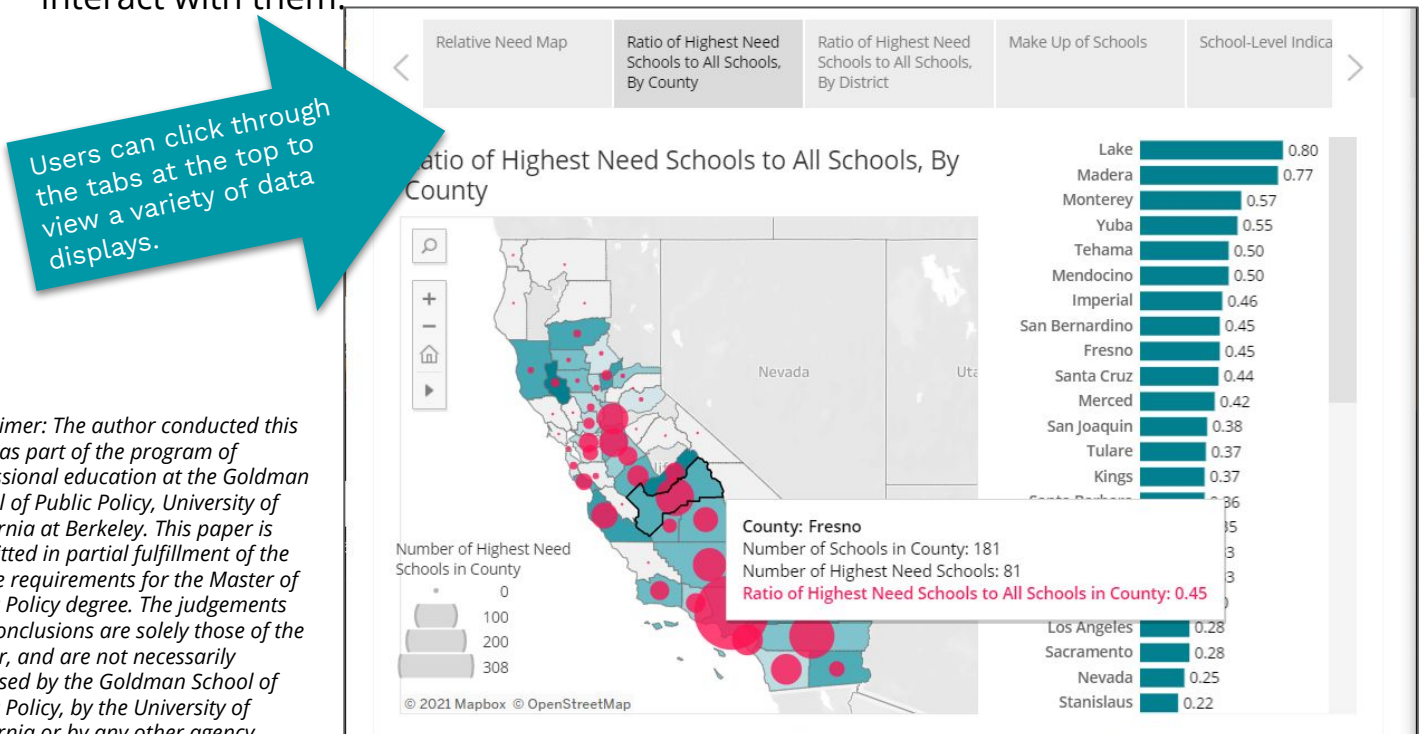


# Guide: Using the Student Health Index Dashboard

The dashboard allows users to click on any school, which opens a tooltip that allows users to read about its characteristics.



The dashboard also allows users click through a variety of graphs and displays, and interact with them.



*Disclaimer: The author conducted this study as part of the program of professional education at the Goldman School of Public Policy, University of California at Berkeley. This paper is submitted in partial fulfillment of the course requirements for the Master of Public Policy degree. The judgements and conclusions are solely those of the author, and are not necessarily endorsed by the Goldman School of Public Policy, by the University of California or by any other agency.*

# Guide: Using the Student Health Index Dashboard

Indicators included in the Index and sources can be found here.

Category	Indicator	Description	Geography	Source and Year	Available through UCSF Health Atlas
Health and Health Care	<b>Diabetes</b>	Diagnosed diabetes rate among adults over 18 at the census-tract level.	Census Tract	PLACES Project. CDC, 2020.	Yes
	<b>Asthma ED admissions</b>	Age-adjusted rate of emergency department visits for asthma per 10,000 people at the census-tract level.	Census Tract	CalEnviroScreen, 2018	Yes
	<b>Teen birth</b>	Percent of women who grew up in this census tract who ever claimed a child, born when they were 13-19 years old, as a dependent.	Census Tract	Opportunity Atlas	Yes
	<b>Health Professional Shortage Areas (HPSA)</b>	Primary Care Health Professional Shortage Area Score indicates shortage of primary care providers and priority for assignment of clinicians (0 to 26 where the higher the score, the greater the priority).	Census Tract	Health Resources and Services Administration	Yes
Socio-economic	<b>Poverty among individuals under 18</b>	Percent of the census tract population under 18 living in households with income below poverty level in the past 12 months.	Census Tract	American Community Survey 5-Year Estimates, 2015-2019	Yes
	<b>Uninsured among under 19</b>	Percent of the census tract population under 19 with no health insurance coverage.	Census Tract	American Community Survey 5-Year Estimates, 2015-2019	Yes
	<b>Healthy Places Index</b>	Census tract-level percentile score where higher percentile indicates more healthy neighborhood conditions based on 25 community characteristics within 8 Policy Action Areas.	Census Tract	The California Healthy Places Index, 2018 – 2020 Public Health Alliance of Southern California.	Yes
School-Level Indicators	<b>Percent FRPL</b>	The percent of students eligible for free or reduced-price meals (FRPM). Calculated as FRPM Count (K-12) divided by enrollment.	School-level	2019-20, CDE Student Poverty - FRPM Data	No
	<b>Percent English Learners</b>	The percent of students who identify as English Learners. Calculated as total EL population divided by Enrollment (K-12).	School-level	2019-20 CDE EL's Data	No
	<b>Percent Chronically Absent</b>	The unduplicated count of students determined to be chronically absent divided by the enrollment at each school.	School-level	2018-19 Chronic Absenteeism Data	No
	<b>Percent experiencing homelessness</b>	The percent of students who are experiencing homelessness.	School-level	2019-20 CDE Cumulative Enrollment Data	No
	<b>Suspension rate</b>	The unduplicated count of students suspended divided by cumulative enrollment.	School-level	2018-19 CDE Suspension Data	No
Other Data Not Included in Index	<b>Mental health hospitalization rate</b>	The number of hospital discharges for mental health issues per 1,000 children ages 5-19 was used.	County	kidsdata.org, Estimate for 2015-2017.	No
	<b>Percent in foster care</b>	The percent of students who are in foster care. Total foster population divided by enrollment.	School-level	2019-20 CDE Cumulative Enrollment Data	No