

CAMARENA



HEALTH

Rural Health Models for Care



Overview of Camarena Health

What is an FQHC

Camarena Health

Barriers we were faced with in serving our Rural Communities

Camarena Health School Based Health Models & Mobile Health Models

Lessons learned from School Based Health Models and Mobile Health approaches

What is a Federally Qualified Health Center (FQHC)

FQHC are public health centers focused on serving at-risk and underserved populations. They offer access to comprehensive care regardless of a patient's ability to pay .

- Federal designation from the Bureau of Primary Health Care
- Assigned to private non-profit or public health care organizations that serve predominantly uninsured, rural populations
- Held to hire quality standards, and meet other service requirements. Such As: our Board is made up with 51% of patients who receive services and represent our service areas.

Also Called

- Community/Migrant Health Centers
- Community Health Centers
- Or 330 Funded Health Organizations
 - Camarena Health's overall budget is made up of less than 20% of Federal Funding..

FQHC's in the Valley





Federally Qualified Health Center's Reach

1 out of 12

people in the United States rely on Federally Qualified Health Centers (FQHCs) for care



SOURCE: HRSA

Health Centers Serve
1 in 12 People in the U.S.
Including...



OUR MISSION

H.E.A.R.T.
HONESTY. EXCELLENCE. ACCOUNTABILITY. RESPECT. TEAMWORK



Camarena Health's mission is to promote healthy communities by providing quality and compassionate healthcare.





**Largest primary care provider in Madera County
with 19 health centers throughout Madera,
Chowchilla, Coarsegold, Oakhurst, and Fresno**

**CAMARENA
HEALTH**



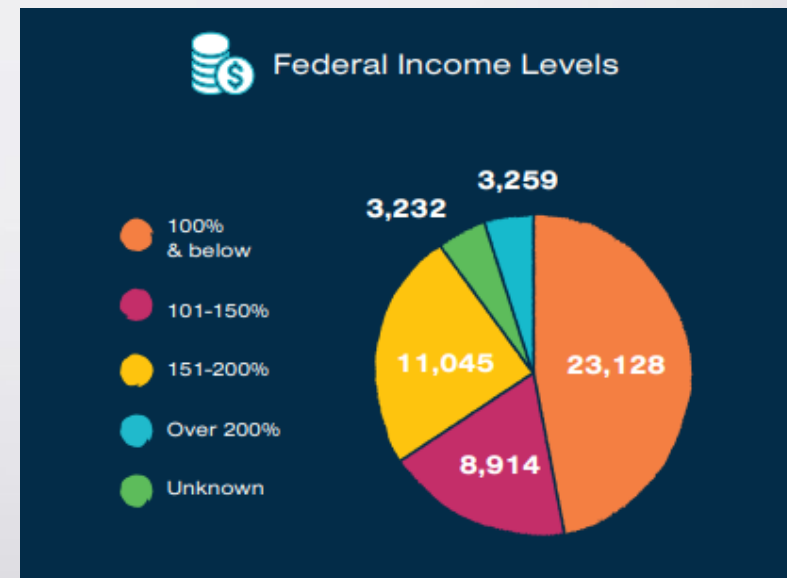
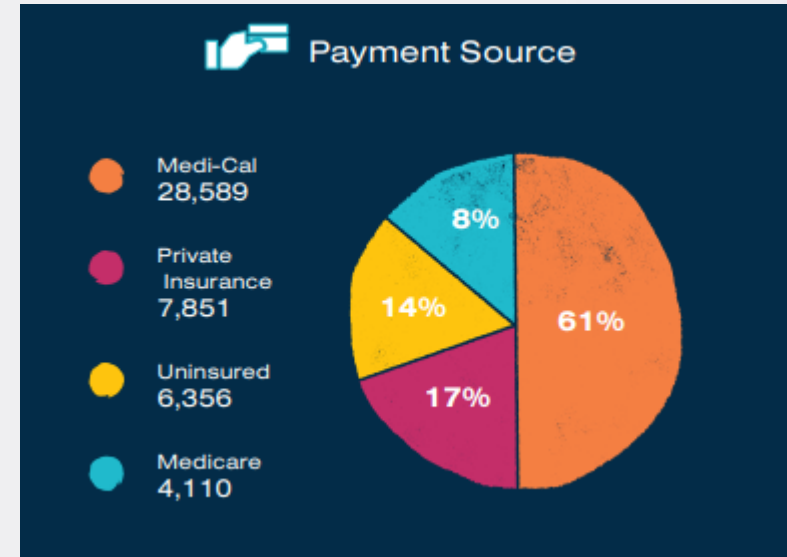
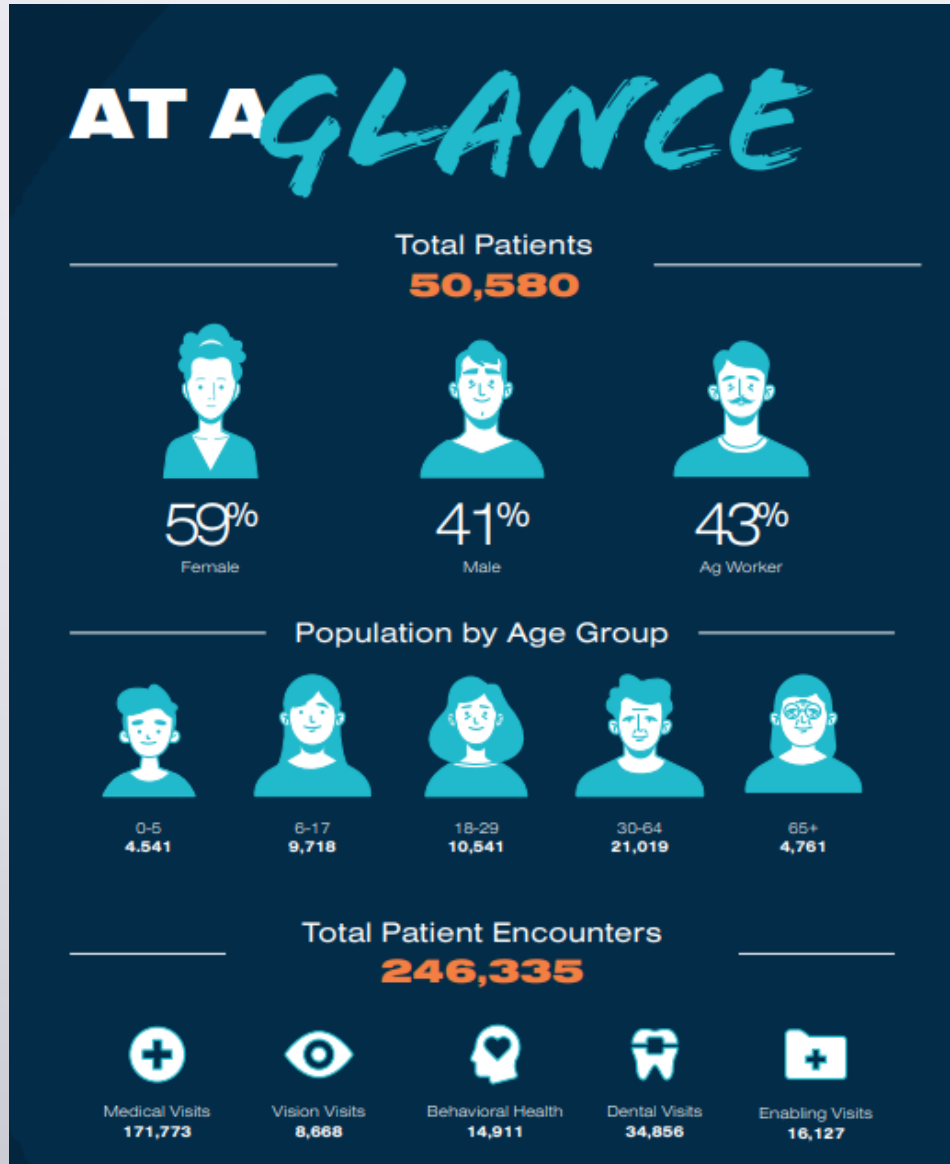


SERVICES

- Family Medicine
- Internal Medicine
- Pediatrics
- Women's Health/OB GYN
- Optometry
- Chiropractic
- Behavioral Health
- Tele Psychiatry
- Dental
- Health Education & Nutrition
- Urgent Care Services
- Labs
- X-Ray Services
- Pharmacy



Patient Demographics 2020





What Does Your Rural Look Like?

What Does Your Rural Look Like?





What are your biggest barriers for students and families in your rural communities?

What Does Your Rural Look Like?

- Access to care
- Lack of providers who accept Medi-Cal for medical & dental
- Types of services or lack of specialty services.
- Lack of health service staff on campus
- Lack of mental health providers in the community
- Transportation
- Need for providers who understand community/populations
- Limited health services on campus
- Students have limited places to access confidential services
- Farmworking families that can't leave work to get care





What would your ideal healthcare models look like for students and families in your rural communities?



Serving Rural Communities

Ag Communities

- Access to care in the evenings, weekend or at work
- Easy access to Health Education and Behavioral Health services
- More specialty services available
- If you are migrant worker or can not afford employee benefits (Grower incentive Programs)
- Providers that understand population needs
- Dental care access



Serving Rural Communities

Mountain Communities

- Being present in the community
- Local
- Trust/ Committed...shows up
- Providers that understand their community
- Dental care access
- Limited Health Service staff on campus
- Limited access to specialty services
- Confidential Services in a small town can be overwhelming/SBHC or Mobile School Base Unit eliminates that
- Limited internet



SCHOOL-BASED HEALTH CENTER

CAMARENA  HEALTH









Mariposa Mobile Health Unit

Bringing Camarena Health to you!

Camarena Health is proud to have partnered with Mariposa County Unified School District to bring the first School-Based Mobile Health Unit in Mariposa County. The Mobile Health Unit is a great way for your student to receive quality health care without having to leave campus. Students can access the Mobile Health Unit's medical, dental, and behavioral health visits.

Our Mobile Unit:

- Is designed to enhance access and connect Mariposa County Unified School District students to care by bringing services to them in a comfortable environment





Mobile Health Unit

Bringing Comprehensive Health to you!





What's Worked

- District & School Board buy-in and support
- Annual staff & administration training
- Nurse/Health Service staff and front office staff coordination
- Warm handoff models
- Health Education services
- Private community and school entrances
- Confidential Services
- Training sites for clinical students
- Classroom engagement





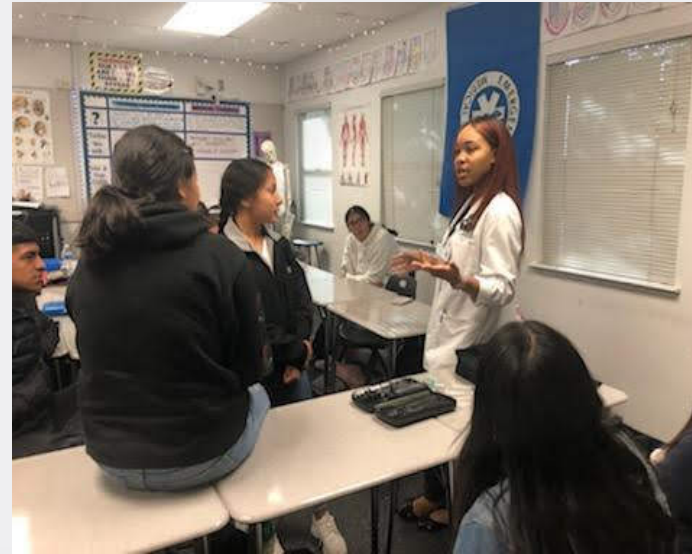
What brought challenges

- Making this model profitable
- SBHC brick and mortar model vs mobile health model
- Consent forms with parents in rural
- Confidential services
- Access to both female and male providers
- Working with special populations (foster and homeless youth)
- Mobile health: Audit/VFC storage in rural communities
- Limited school health services staff on campuses to collaborate
- Mobile Health Unit limited internet and connectivity, downtime procedures



Other opportunities to impact
healthcare in rural communities....

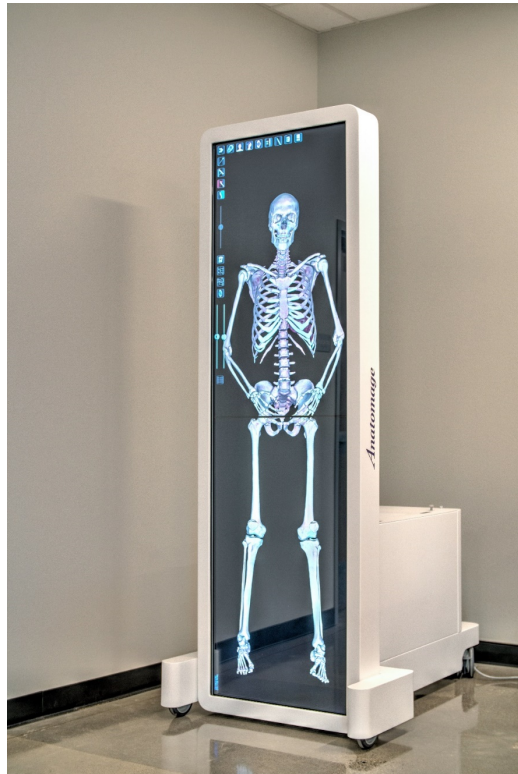
Career and Technical Education



- Middle School & High School skill building Youth Conferences
- Work with FUSD and MUSD Health Pathway Programs to
- Provide Externships for students
- Teacher Externships
- Support Youth Advocacy



MATILDA TORRES HIGH SCHOOL





Teaching Health Center Program

- **AT Still University Physician Assistant Program**
 - Home Town Scholars Program
- **California Health Sciences University**
 - Medical Education Faculty & Students onsite
 - Pharmacy Program Faculty & Students onsite
- **Valley Children's Pediatric Residency Program**
 - Camarena Kids is a Continuity site for (4) residents
- **UCSF Family Medicine Residency Site**
- **Saint Agnes Family Medicine Residency Program**
- **Fresno Pacific University- Nurse Practitioner Program**
 - Clinical Placements at our locations
- **UC Davis-Nurse Practitioner Program**
 - Clinical Placements at our locations
- **Western University- School of Dentistry**
 - Dental Fellows Program
- **Fresno State University**
 - Nurse Practitioner Program
 - Public Health- Community Health Internship Experience
 - ASW Clinical Placement Program

CAMARENA  **HEALTH**

Thank You,
Nichole Mosqueda
Chief Administrative Officer
nmosqueda@camarenahealth.org