



Community Health Association
Inland Southern Region

“Strengthening health care in the safety net”

History of FQHCs

- Neighborhood Health Center movement started in the early 1960's with President Johnson's Economic Opportunity Act. In 1975, the federal authorities passed a special Community Health Center program which was authorized under Section 330 of the Public Health Service Act.
- Federally Qualified Health Centers (FQHCs) are public or nonprofit clinics that care for patients regardless of insurance status or ability to pay.
- FQHCs are as diverse as they are widespread and are integral to the state's safety-net provider landscape. "If you've seen one FQHC...you've seen one FQHC"
- In the period immediately following the implementation of the federal Affordable Care Act (ACA) in 2014, many FQHCs experienced rapid growth.
- In the post-ACA period, and with Health 4 All Medi-Cal expansion efforts, FQHCs have continued to add large numbers of patients throughout the state, and many health centers have increased offerings of specialty services and of care for elderly patients.
- The COVID-19 pandemic had a significant impact on FQHCs, causing severe financial hardships for many health centers while hitting FQHC patients harder than many other groups in the state.

What Is An FQHC??

According to the [Health Resources and Services Administration \(HRSA\)](#), FQHCs:

- Qualify for funding under [Section 330 of the Public Health Service Act \(PHS\)](#).
- Qualify for enhanced reimbursement from Medicare and Medicaid*, as well as other benefits
- Serve an underserved area or population
- Offer a sliding fee scale
- Provide comprehensive services (either on-site or by arrangement with another provider), including:
 - Preventive health services
 - Dental services
 - Mental health and substance abuse services
 - Transportation services necessary for adequate patient care
 - Hospital and specialty care
- Have an ongoing [quality assurance program](#)
- Have at least 50% patient representation on [governing board of directors](#)

Reference: fqhc.org/what-is-an-fqhc

COMMUNITY FOCUSED

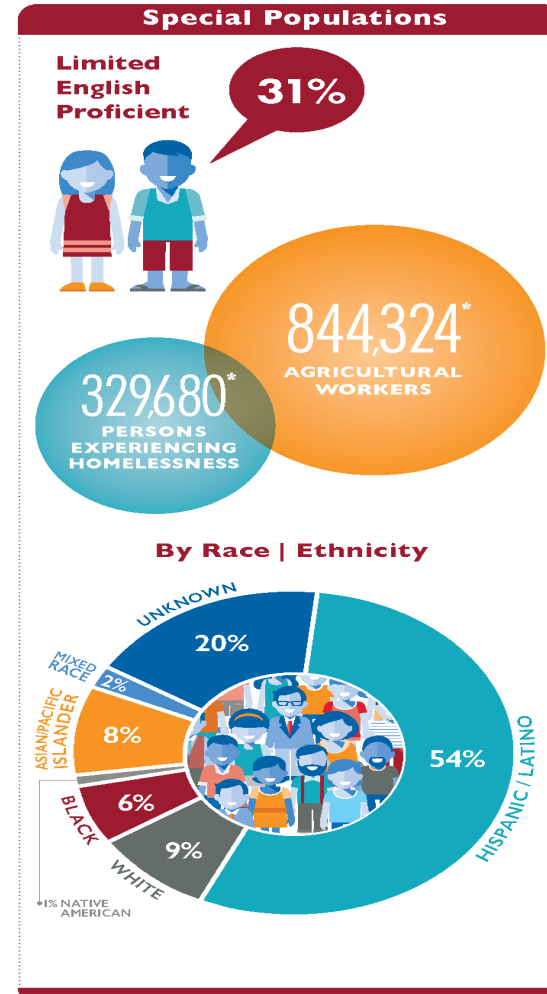
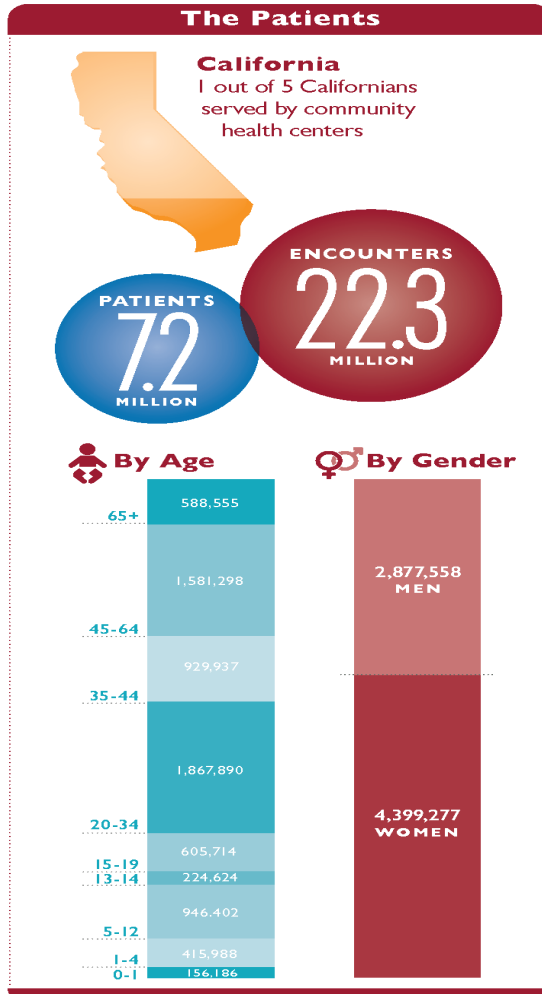


MEMBERSHIP DRIVEN

FQHCs & Look-Alikes in CA

COMMUNITY HEALTH CENTERS

2021 STATE PROFILE



Information from the California Primary Care Association www.cPCA.org

Data is based on 2020 OSHPD AUR.

*Special Populations data is specific to Federally Qualified Health Center (FQHC) collected data only.

History of CHAIRS

❖ **Community Health Association Inland Southern Region**

- ❖ Founded in 2009
- ❖ Formerly known as the Community Clinic Association of San Bernardino County
- ❖ Incorporated in 2010
- ❖ Designated a 501 (c) (3) nonprofit organization in 2011
- ❖ Name was changed in 2017 to encompass both Riverside County and San Bernardino County
- ❖ 21 Organizational Members representing 116 community-based clinics and mobile health sites throughout the Inland Empire
- ❖ Board of Directors is comprised of one senior executive from each of our member organizations

About our Members

- ❖ **21 Members**
- ❖ **116 Clinical Sites**
- ❖ **Over 439,854 unique patients** (2021 data)
- ❖ **Over 1,354,589 patient visits** (2021 data)

- ❖ **Federally Qualified Health Centers, Look-Alikes & CHCs**

- ❖ Blessing Community Health Center
- ❖ Borrego Community Health Foundation
- ❖ Central City Community Health Center
- ❖ Central Neighborhood Health Foundation
- ❖ Community Health Systems, Inc.
- ❖ DAP Health
- ❖ Friends of Family Health Center
- ❖ Health Service Alliance
- ❖ Mission City Community Network
- ❖ Parktree Community Health Center
- ❖ Planned Parenthood of OC and SB Counties
- ❖ SAC Health
- ❖ Tri-State Community Health Center
- ❖ Unicare Community Health Center, Inc.

- ❖ **County/City/District Operated Health Centers**

- ❖ County of San Bernardino Dept. of Public Health
- ❖ Morongo Basin Community Health District/Health Centers
- ❖ Riverside University Health Systems

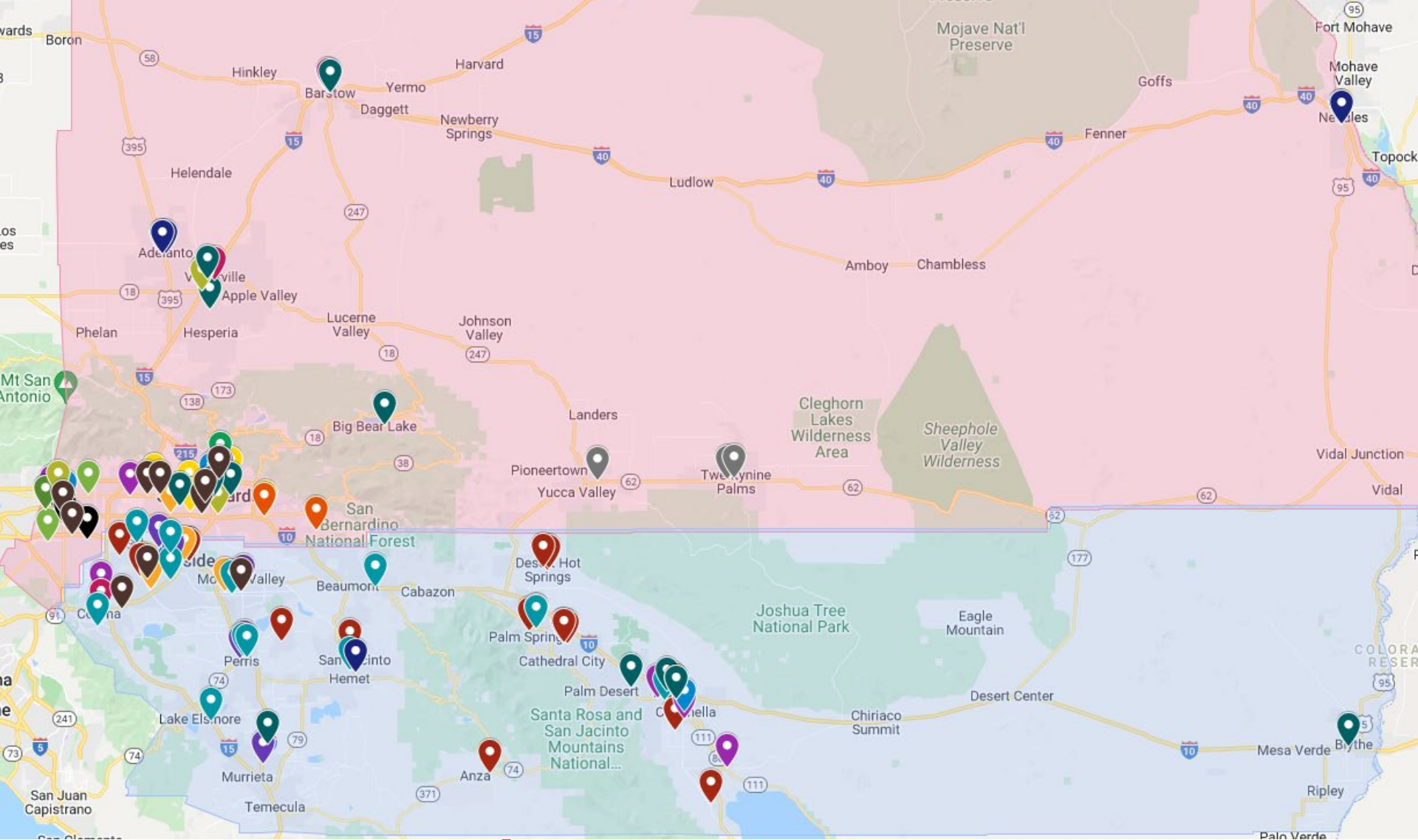
- ❖ **Hospital Based Family Health Centers**

- ❖ Arrowhead Regional Medical Center
- ❖ Redlands Community Hospital

- ❖ **Free Clinics**

- ❖ Al-Shifa Clinic, Inc.
- ❖ Lestonnac Free Clinic





Members Continued

- CHAIR members span a large geographic region. Health centers are located from Needles (farthest location East) to Montclair (farthest location West) in San Bernardino County. In Riverside county, our members are represented from Blythe (farthest location East) to Corona (farthest location West).

CHAISR Priority Focus Areas

- ❖ Workforce Development – Inland Empire AHEC
- ❖ Expanding Access
- ❖ Provider, Staff & Community Partner Education
- ❖ Advocacy & Policy
- ❖ Emergency Management
- ❖ Quality Improvement

Questions?



[This Photo](#) by Unknown Author is licensed under [CC BY-SA-NC](#)