

3 SAMPLE SBHC FACILITIES

Typical Space Requirements

Program/Service/Function	Estimated Square Footage
Waiting/reception area	75 – 200
Office(s)/provider area – each	60 – 120
Sick/resting area (for student cots)	100 – 200
Examination/counseling room(s) - each	80 – 100
Bathroom	50 – 120
Laboratory	80 – 150
General storage	50 – 100
Conference/meeting space/break room	120 – 200

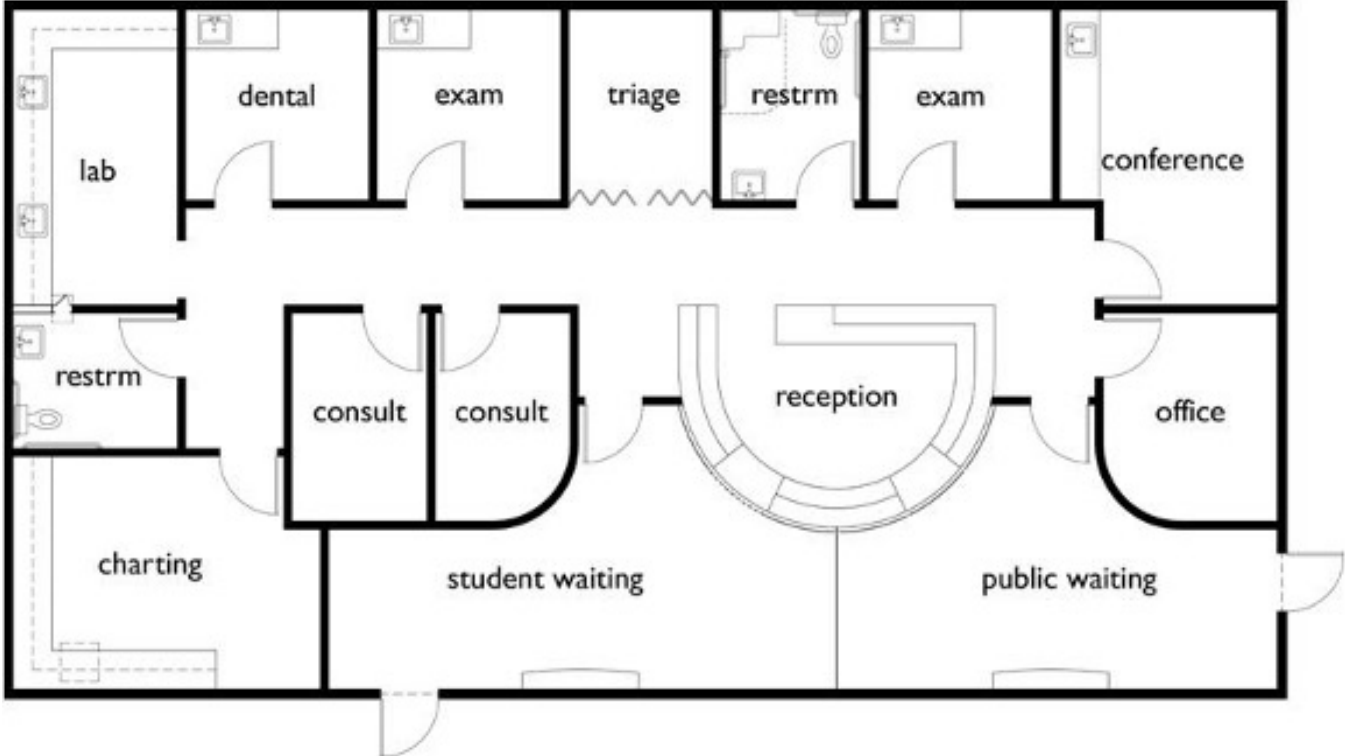
Considerations for Layout

- Program Requirements
- Population(s) Served
- Versatility/Function
- Space Limitations
- Regulations (e.g. ADA, OSHPD 3)

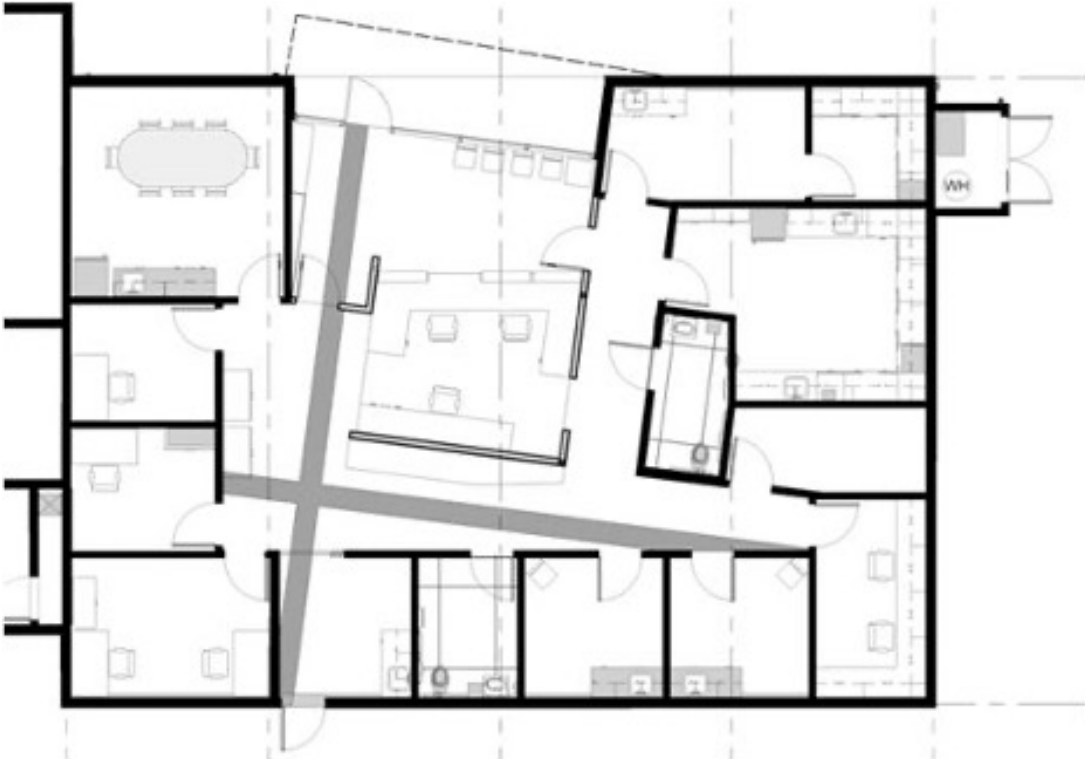
Credit to:

Mara Larsen-Fleming, MPP, MPH, SBHC Program Manager, OUSD
 David Byrens, AIA, Principal, Byrens Kim Design Works
 Dong Kim, AIA, LEED AP, Principal, Byrens Kim Design Works

Madison Middle School



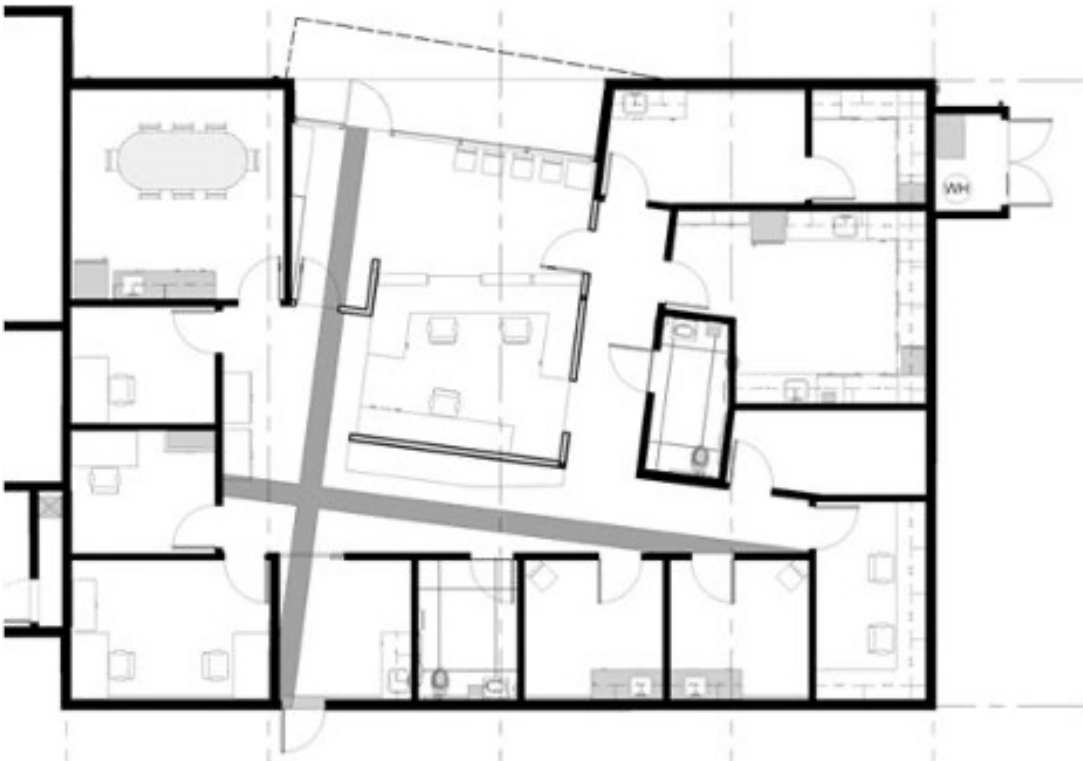
Havenscourt Middle/High School Campus



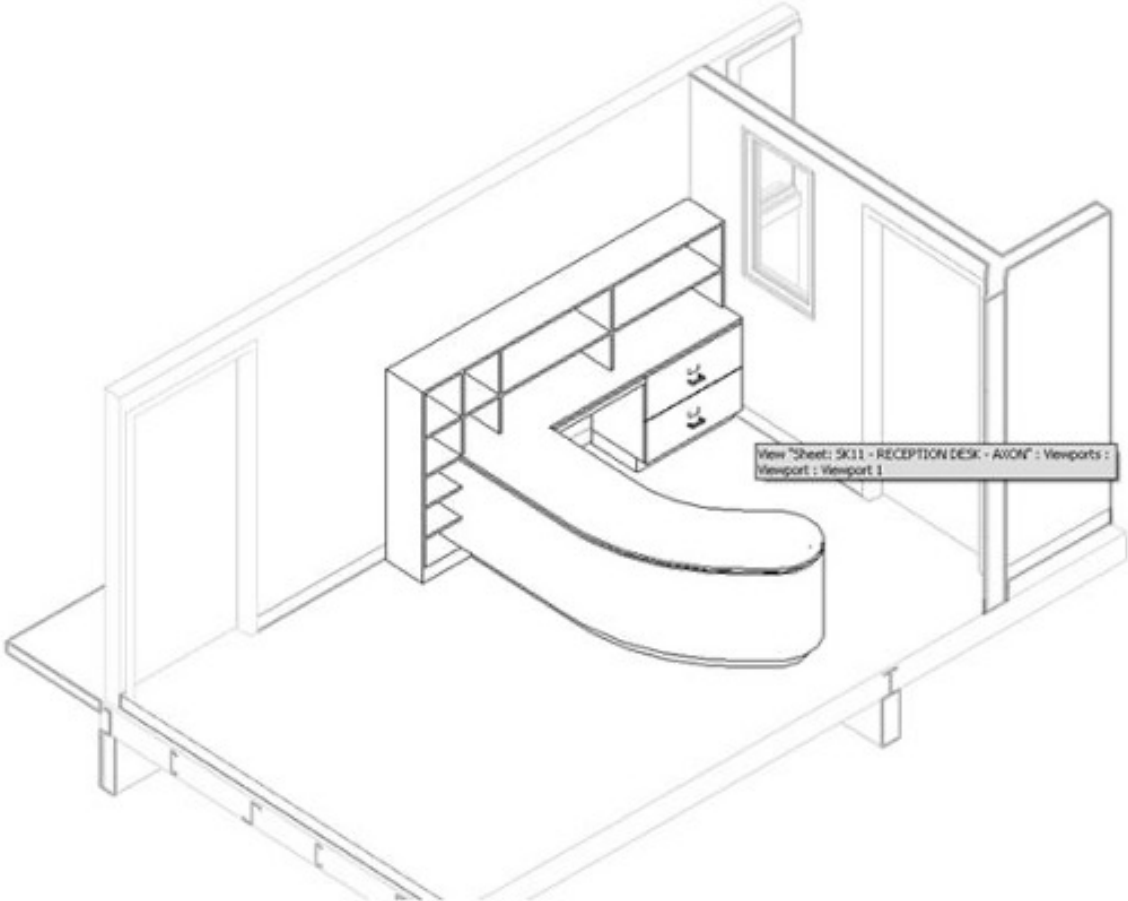
Havenscourt Middle/High School Campus (Continue)



Skyline High School



Skyline High School (Continue)



Key Steps

- Design Phase: Balance ideal layout with ensuring design meets minimal requirements (6 months)
 - Fire code
 - Division of State Architect Pre Application
 - ADA
 - OSHPD 3 (outpatient health facilities)
- Submit drawings for approval by Division of the State Architect (DSA) – Permitting Agency (3-6 months)
- Construction (6-9 months depending on scope)
- Fire Clearance/Licensing (1-2 months)
 - Schedule visit with Fire Department
 - Resolve issues identified in safety report
 - Add satellite site to project scope with HRSA (longer for independent license)

Cost (Outdated Estimates)

- Cost per square foot (Construction Cost) – \$350/SF to \$450/SF
 - San Francisco Bay Area Cost Index
- Project Construction Cost:
 - Madison Health Center: \$950,000
 - Havenscourt Health Center: \$840,000
 - Skyline Health Clinic: \$386,000
- Average budget = \$0.75 – \$1.5 Million
 - Includes Hard Cost (i.e. construction) and Soft Cost (e.g. permit, design, management, etc.)
- Considerations for Cost Impact

Collaborative Process – Roles and Responsibilities

- Facilities Department – Project Manager
- SBHC Program Manager
- Architect
- Contractor
- Lead Partner Agency
- Site/School Administrator
- Community

Lessons Learned (Process)

- Include lead partner agency in design process as early as possible: Clinic Manager, Medical, Facilities, IT Directors, etc.
 - Needs to meet licensing requirements
 - Needs to account for staff needs/flow of services/privacy & confidentiality
 - Change orders are costly
- Consider needs of others that will live in space (e.g. School Nurse & Mental Health Clinicians)
- Including broader community builds buy-in and relationships, but takes additional time (structured process is key!)
- Get in touch with Fire Department early in order to identify potential issues

Lessons Learned (Process)

- Consider separate community entrance
- Consider confidentiality needs at different school-levels.
 - Will teens as well as younger children with parents need to use services?
 - Consider co-locating with other youth development services to reduce stigma (have defined area for confidential services)
- Dental operatories are expensive & have another layer of regulation
 - 2 dental chairs for efficiency

Anticipate facilities needs associated with EHR implementation

- Budget up front for security, furniture and equipment
- Make sure to include licensing requirements: clean and dirty sinks in lab, eye wash station in lab, sinks in exam rooms, etc.
- Do sweat the small stuff: Sound-proofing, sink in triage room, ventilation, lighting, pass through from bathroom to lab, no carpeting.