

**Kaiser Permanente  
Medi-Cal Direct Contract Transition Overview  
Inland Empire School Health Coalition Meeting**

**December 1, 2023**

# The Kaiser Permanente Mission



**Kaiser Permanente exists to provide high-quality, affordable health care services and to improve the health of our members and the communities we serve.**

# About Kaiser Permanente

A unique, **integrated** nonprofit provider of health care and coverage

Founded in 1945, Kaiser Permanente is headquartered in Oakland, California, and comprises:

**Kaiser Foundation Health Plan, Inc.**

*A health insurance provider*

**Kaiser Foundation Hospitals and its subsidiaries**

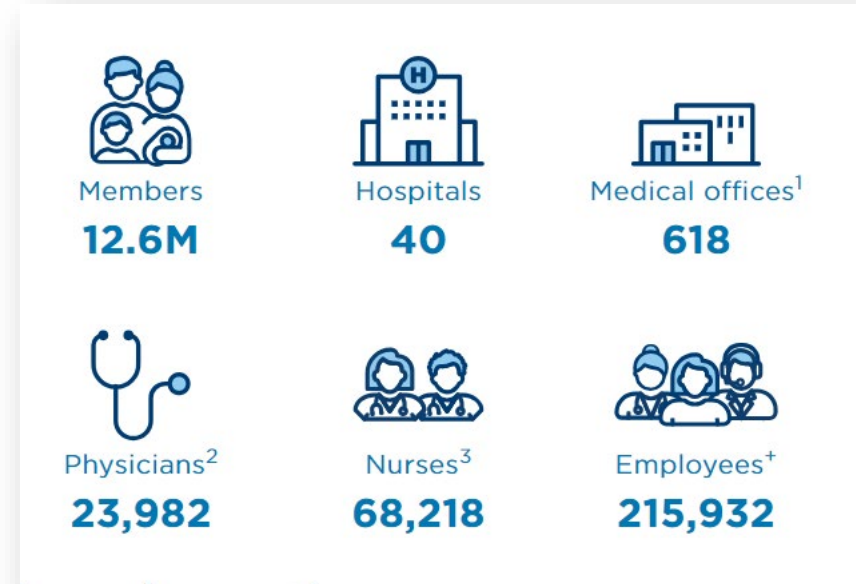
*Our hospitals and medical offices*

**The Permanente Medical Groups**

*Our physicians*

Kaiser Permanente operates in 8 U.S. states and the District of Columbia.

For more information, go to  
<https://about.kaiserpermanente.org/who-we-are/fast-facts>



**KP National Medicaid and Chip Enrollment**      **1,364,260**  
*September 2023*

<sup>1</sup> Medical offices and other outpatient facilities as of September 30, 2023.

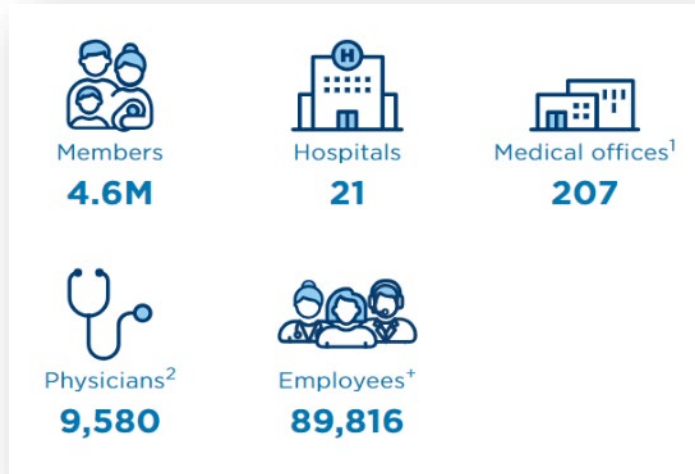
<sup>2</sup> Approximate as of December 31, 2022, representing all specialties; excluding pool, network, and referral physicians as well as locum tenens.

<sup>3</sup> Approximate as of January 31, 2023, representing all specialties.

<sup>+</sup> Approximate as of September 30, 2023, representing technical, administrative, and clerical employees, nurses, and non-physician caregivers.

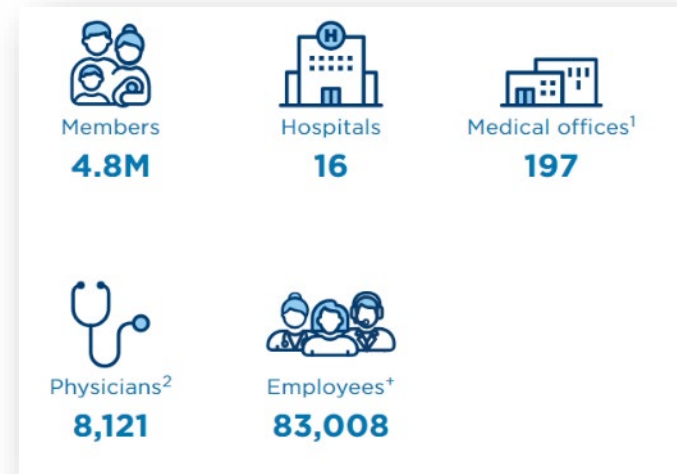
# About Kaiser Permanente in California

## Northern California Market



**Total NCAL Medi-Cal Enrollment:** 425,630  
*(includes Plan Partner enrollment)*  
September 2023

## Southern California Market



**Total SCAL Medi-Cal Enrollment:** 606,773  
*(includes Plan Partner enrollment)*  
September 2023

<sup>1</sup> Medical offices and other outpatient facilities as of September 30, 2023.

<sup>2</sup> Approximate as of December 31, 2022, representing all specialties; excluding pool, network, and referral physicians as well as locum tenens.

<sup>3</sup> Approximate as of January 31, 2023, representing all specialties.

<sup>+</sup> Approximate as of September 30, 2023, representing technical, administrative, and clerical employees, nurses, and non-physician caregivers.

# Medi-Cal Direct Contract, effective 1/1/24


- Creates a single, direct contract between the California Department of Health Care Services (DHCS) and Kaiser Foundation Health Plan, Inc. (KFHP),\* to provide coverage and care for Medi-Cal enrollees in 32 California counties
  - ✓ Expands KP's Medi-Cal services from 22 to 32 counties
  - ✓ Allows KP to offer Medi-Cal coverage in all areas of the state where it offers commercial health care coverage
  - ✓ Extends access to Kaiser Permanente care, including Specialty care, to non-members in selected areas via community partners and pilot programs

\* The direct contract is between DHCS and KFHP. The terms "Kaiser Permanente" and "KP" are used in this presentation to refer to KFHP and affiliated entities, such as The Permanente Medical Groups.

January 17, 2023

## Our excellent care extends to everyone

California's Department of Health Care Services rates our Medi-Cal plans highest in the state for quality and equitable care.



Kaiser Permanente has the only Medi-Cal plans in California to surpass the threshold for quality care in more than 90% of the care-delivery measures analyzed.

Kaiser Permanente's Medi-Cal health plans in California are the highest rated in the state for quality care, according to a December 2022 report from the state's Department of Health Care Services. Medi-Cal is California's Medicaid health care program, which covers a variety of medical services for children and adults who have limited income and resources.

To promote better health outcomes and preventive services, the DHCS requires Medi-Cal plans to report annually on a set of quality measures associated with children's preventive services, women's health preventive services, chronic medical conditions, and behavioral health conditions. Kaiser Permanente's Northern and Southern California Medi-Cal health plans were the only plans among more than 2 dozen in the state that achieved established quality levels for more than 90% of the measures.

Kaiser Permanente's Medi-Cal plans are rated highest for quality and equitable care.

<https://about.kaiserpermanente.org/news/our-excellent-care-extends-to-everyone>

# Kaiser Permanente Medi-Cal Direct Contract Footprint

Effective 1/1/24, Kaiser Permanente will have a direct Medi-Cal contract in 32 counties in California.

NORTHERN CALIFORNIA		SOUTHERN CALIFORNIA
<b>Existing Direct Contract (no change after 1/1/24)</b>		
Amador El Dorado	Placer Sacramento	San Diego
<b>Plan Partner (Medi-Cal enrollees in these counties will transition to direct coverage with KP, effective 1/1/24)</b>		
Alameda Contra Costa Marin Napa San Francisco San Joaquin	San Mateo Santa Clara Solano Sonoma Yolo	Kern Los Angeles Orange Riverside San Bernadino Ventura
<b>New to KP Medi-Cal* (KP will accept new enrollees in these counties after 1/1/24)</b>		
Fresno Kings Madera Mariposa	Santa Cruz Sutter Stanislaus Tulare** Yuba	Imperial Tulare**



\*New Medi-Cal County under Direct Contract – expansion counties meet current KP Commercial footprint.

\*\*Tulare Northern CA: 93618, 93631, 93646, 93654, 93666, 93673; Tulare Southern CA: 93238, 93261.

# Eligibility for Medi-Cal Enrollment into Kaiser Permanente

**The following populations are eligible to join KP's Medi-Cal managed care plan effective 1/1/2024:**

- Those who have had KP coverage within the past 12 months
- Those who are qualified family linkages of existing KP members
- Those who are foster youth and former foster youth
- Those who are duals, covered by both Medicare and Medi-Cal

Additional growth may occur through auto assignment for beneficiaries who do not select a health plan. KP will participate in auto assignment through default enrollment, depending on capacity in each county.

## **Qualified Family Linkages include:**

- A beneficiary's spouse or domestic partner
- A beneficiary's dependent child, foster child, or stepchild under 26 years of age
- A beneficiary's dependent who is disabled and over 21 years of age
- A parent or stepparent of a beneficiary under 26 years of age
- A beneficiary's grandparent, guardian, foster parent, or other relative of a beneficiary under 26 years of age with appropriate documentation of familial relationship.

# KP Medi-Cal Membership in Riverside and San Bernadino Counties

As KP expands its Medi-Cal footprint to match its Commercial footprint, KP expects to serve 67,600 Medi-Cal enrollees in Riverside County and 76,560 in San Bernadino County by the end of 2024.

Year-End KP Medi-Cal Membership Projection	2023	2024
Riverside	73,020	67,600
San Bernardino	82,180	76,560

## 2024 Year-End KP Medi-Cal Membership Projections by Eligibility Pathway

County	Continuity of Care and Coverage	Duals	Foster Youth	Default*
Riverside	60,200	6,100	1,060	240
San Bernardino	67,210	7,450	1,580	320

\* For 2024 only, default enrollment will start in July 2024.



# Upcoming Communications: Notifying Medi-Cal Beneficiaries in Riverside and San Bernardino Counties

Notice	Sender	Description
<b>Notice</b>	California Department of Health Care Services	Notices sent to Dual-eligible members with a Kaiser Permanente Medicare Advantage plan indicating they will be automatically enrolled into the Kaiser Permanente Medi-Cal MCP per Medi-Cal Matching Plan policy.
<b>60-day Notice</b> November 1, 2023	Kaiser Permanente	Notices to members who are in the Kaiser Permanente subcontracted MCP to IEHP indicating they will stay with Kaiser Permanente
<b>30-day Notice</b> December 1, 2023		Second notice to members who are in the Kaiser Permanente subcontracted MCP to IEHP indicating they will stay with Kaiser Permanente
<b>For new Medi-Cal enrollees</b>	They can request Kaiser Permanente via DHCS's Health Care Options <a href="http://www.healthcareoptions.dhcs.ca.gov">www.healthcareoptions.dhcs.ca.gov</a> 1-800-430-4263 <u>Note:</u> Dual-eligible members enrolled in a Medicare Advantage plan with a matching Medi-Cal MCP will be automatically enrolled in the matching Medi-Cal MCP per the Medi-Cal Matching Plan policy	

**Medi-Cal beneficiaries choosing Kaiser Permanente will be enrolled effective 1/1/24, subject to meeting enrollment criteria.**

# New, Dedicated Call-In Service for Medi-Cal Beneficiaries

## KP Medi-Cal Call Center

- **24/7 Designated Medi-Cal Line: 1-855-839-7613**  
Call to speak to a live Medi-Cal trained agent.
- One phone number for all Medi-Cal members to receive information, and also be warm transferred to make appointments (medical, vision, transportation, mild-to-moderate behavioral health)
  - If a member calls the main KP member services number (800-464-4000) with their ID information, they will be automatically routed to a Medi-Cal trained agent.
  - If the member does not supply their ID information, and they reach an agent who is not Medi-Cal trained, they will be warm transferred to a Medi-Cal trained agent.



### Non-KP Services

Riverside County Dept of Behavioral Health	1-800-706-7500*	Medi-Cal Rx:	1-800-977-2273
San Bernadino County Dept of Behavioral Health	1-888-743-1478*	Denti-Cal:	1-800-322-6384

\*From DHCS County Mental Health Plan Information Site (<https://www.dhcs.ca.gov/individuals/Pages/MHPContactList.aspx>)

# NEW On Kaiser Permanente's website

The screenshot shows the top navigation bar of the Kaiser Permanente website. It includes the logo, navigation links for 'Learn', 'Shop Plans', 'Doctors & Locations', 'Health & Wellness', 'Get Care', and 'Pay Bills', a search bar with the placeholder text 'Explore topics, care, coverage', and buttons for 'Register' and 'Sign In'. Below the navigation bar is a notification banner about COVID-19 vaccines. The main content area features an article titled 'Medi-Cal Changes for Members Assigned to Kaiser Permanente Through Another Health Plan' with a sub-image of a woman holding a mug.

# KP.org/Medi-Cal2024

Information, a short video, and FAQs for KP's Medi-Cal members

This screenshot displays the 'Frequently Asked Questions' section of the website. It lists 14 questions with expandable icons. The questions cover topics such as the reasons for the change, eligibility, staying with Kaiser Permanente, benefit changes, roles of Health Care Options, keeping current doctors, referrals, switching health plans, ID cards, old membership cards, eligibility for continuity of care, Medicare coverage changes, and Whole Child Model programs. A 'Help in your language' link is located at the bottom of the list.

The video player shows a blue circle with the text '2024 Medi-Cal Coverage Changes'. The video title 'Medi-Cal Direct' is visible at the top left of the player. The video progress bar at the bottom indicates a duration of 00:00 / 01:16.

# What is Enhanced Care Management (ECM)?

ECM is a Medi-Cal benefit and is a whole-person, interdisciplinary approach to care that addresses the **clinical and non-clinical** needs of Members with **complex** medical and social needs through systematic coordination of services & **comprehensive care management** that is community based, interdisciplinary, high touch and person centered.

## Core Services



Assigned to a Care Manager



Comprehensive assessment & care management plan



Implement care plan and coordinate with multidisciplinary team



Health promotion/ support to adopt healthy behaviors



Care transitions/ medication reconciliation



Emphasis on face-to-face coordination, including appointment accompaniment as needed



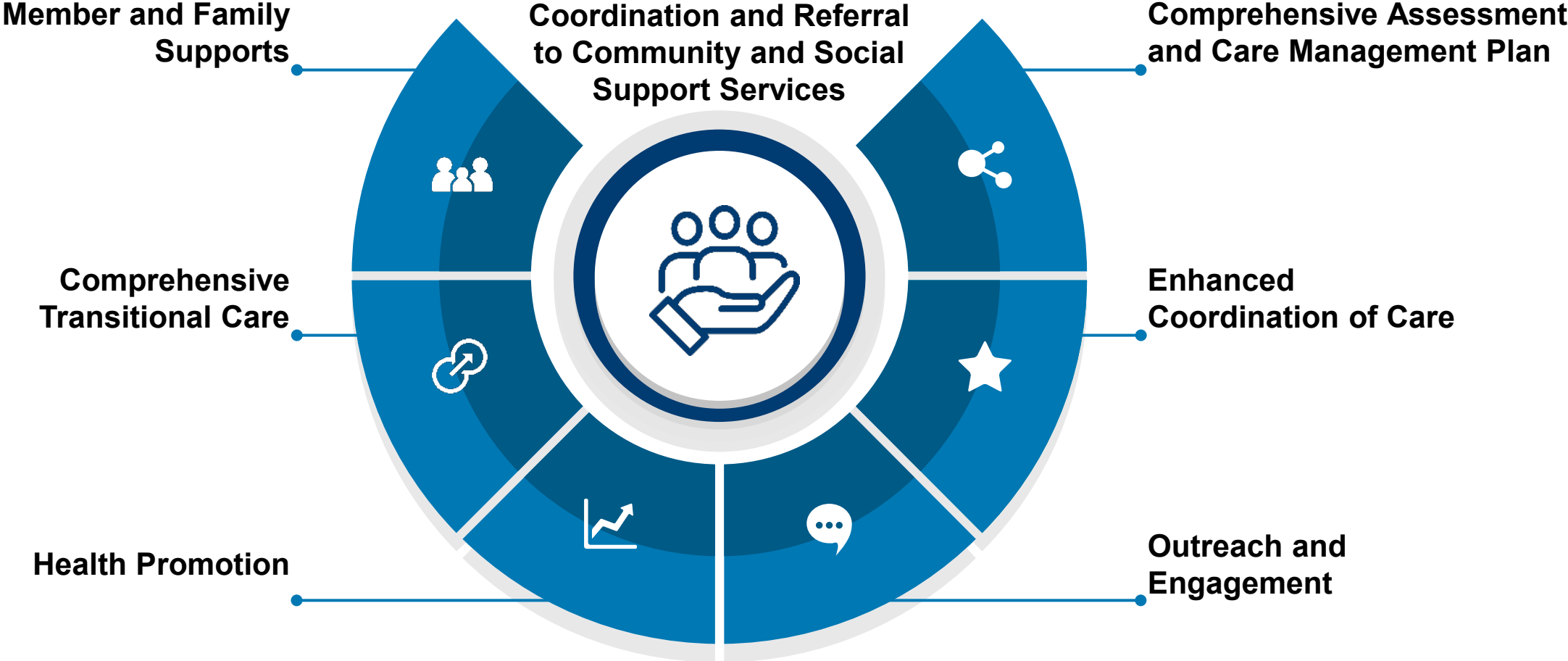
Ensure member and family are informed and engaged



Referring members to resources, including following up to ensure services were rendered

# Core Elements of Enhanced Care Management

Enhanced Care Management will connect high-need members with quality, person-centered care.



# Who is Eligible for ECM?










## “Population of Focus” Categories



**ADULTS\***



**CHILDREN & YOUTH**

			ADULTS*	CHILDREN & YOUTH
	1	Individuals or Families Experiencing Homelessness	Jan 2022	Jul 2023
	2	Individuals At Risk for Avoidable Hospital or ED Utilization (formerly called “High Utilizers”)	Jan 2022	Jul 2023
	3	Individuals with Serious Mental Health and/or Substance Use Disorder Needs	Jan 2022	Jul 2023
	4	Individuals Transitioning from Incarceration	Jan 2022 (some counties) Jan 2024 (statewide)	July 2023 (some counties); Jan 2024 (statewide)
	5	Adults Living in the Community and At Risk for LTC Institutionalization	Jan 2023	n/a
	6	Adult Nursing Facility Residents Transitioning to the Community	Jan 2023	n/a
	7	Children and Youth Enrolled in California Children’s Services (CCS) or CCS Whole Child Model (WCM) with Additional Needs Beyond the CCS Condition	n/a	Jul 2023
	8	Children and Youth Involved in Child Welfare	n/a	Jul 2023
	9	Birth Equity	Jan 2024	Jan 2024

\*Adults are 21+

# What are Community Supports?

Community Supports (CS) are non-medical, wrap-around services provided as a substitute or support to avoid other Medi-Cal covered services such as emergency room visits, an avoidable hospital or skilled nursing facility admission, or a discharge delay. As of 1/1/24, most of the counties KP serves will offer all 14 of the Community Supports.\*

<b>Supports for Housing Insecurity</b> 	<b>Supports to Keep People at Home</b> 	<b>Supports to Improve a Chronic Condition</b> 	<b>Support to Recover from Acute Intoxication</b> 
<p>Primary Audience: Individuals experiencing homelessness</p>	<p>Primary Audience: Individuals at risk for institutionalization in a nursing home</p>	<p>Primary Audience: Individuals who have certain chronic conditions and require support</p>	<p>Primary Audience: Individuals found publicly intoxicated to divert from jail or the Emergency Department</p>
<ol style="list-style-type: none"> <li>1. Housing Transition Navigation Services</li> <li>2. Housing Deposits</li> <li>3. Housing Tenancy &amp; Sustaining Services</li> <li>4. Short-Term Post Hospitalization Housing</li> <li>5. Recuperative Care (Medical Respite)</li> <li>6. Day Habilitation</li> </ol>	<ol style="list-style-type: none"> <li>7. Respite Services (for caregivers)</li> <li>8. Nursing Facility Transition/ Diversion to Assisted Living Facilities</li> <li>9. Community Transition Services/ Nursing Facility Transition to a Home</li> <li>10. Personal Care &amp; Homemaker Services</li> <li>11. Environmental Accessibility Adaptations (Home Modifications)</li> </ol>	<ol style="list-style-type: none"> <li>12. Meals/Medically Tailored Meals</li> <li>13. Asthma Remediation</li> </ol>	<ol style="list-style-type: none"> <li>14. Sobering Centers</li> </ol> <p><i>Note: majority of the referrals for this service are from law enforcement and stays must be less than 24 hours.</i></p>

\*Exceptions include the following CS which are **not** offered in these counties: Asthma Remediation (Marin, Napa, San Mateo, Solano, Sonoma), Community Transition Services/Nursing Facility Transition to a Home (Marin, Napa, Santa Cruz, Solano, Sonoma), Day Habilitation (Marin, Napa, Solano, Sonoma), Nursing Facility Transition/Diversion to Assisted Living Facilities (Marin, Napa, Santa Cruz, Solano, Sonoma), Home Modifications (Marin, Solano, Sonoma), Personal Care & Homemaker Services (San Mateo), Recuperative Care (San Mateo), Respite Services (Santa Cruz), Sobering Centers (Marin, San Mateo, Solano, Sonoma), Short Term Post Hospitalization Housing (San Mateo)

# Network Lead Entity (NLE) Overview

Kaiser Permanente's Network Lead Entity (NLE) will support the development of a community partner network for Enhanced Care Management (ECM), Community Supports (CS), and Community Health Worker (CHW) services in all 32 counties.

## Centralized Service Coordination

KP will centralize the coordination of services through the NLEs. KP will retain oversight of eligibility, member notifications, quality, and grievances.



## Comprehensive Network Coverage

The expertise and services of three statewide NLEs will provide comprehensive coverage and enable timely access to ECM, CS, and CHW services.

## Collaboration with Local Community Based Partners

NLEs will provide ECM, CS, CHW services in close collaboration with community-based organizations with geographic and population of focus expertise.



# Three Community-Based Providers have been selected to serve as Network Lead Entities

Multiple Network Lead Entities will allow Kaiser Permanente to build a comprehensive network to provide Enhanced Care Management (ECM), Community Supports (CS) and Community Health Worker (CHW) benefits for Kaiser Medi-Cal members.



- **Expertise in working with children, youth, young adults, and families**
- Model anchored in existing relationships with trusted community-based organizations with a focus and expertise in children and youth (includes Counties, etc.)
- Provides upstream assistance for capacity building for Community-Based Organizations



- **Current contracted Enhanced Care Management and Community Supports provider with Kaiser**
- Statewide presence in both NCAL and SCAL
- Extensive experience in multiple states by partnering with CBOs
- Currently prepared to provide CHW services in 21 counties with expansion planned to all 32 counties by 2024
- Strong existing infrastructure to facilitate business systems with capacity to scale



- **Significant experience as an NLE**
- Distinct expertise in supporting "high needs members"
- Well established relationships with local community-based organizations
- Demonstrated understanding of how other Medi-Cal services can be accessed outside of ECM to coordinate and support care by work with Multipurpose Senior Services Program/Assisted Living Waiver programs

# How a community-based organization can serve KP members

KP is working with three NLEs to develop a network of community-based ECM, CS, and CHW providers.

If your organization wishes to become part of an NLE's network, you may send an email message to:



[network@fullcirclehn.org](mailto:network@fullcirclehn.org)



[ILSCAProviderRelations@ilshealth.com](mailto:ILSCAProviderRelations@ilshealth.com)



[Hubinfo@picf.org](mailto:Hubinfo@picf.org)

***In your email, please specify the services your organization provides, geography serviced, and population expertise.***

\*Partners in Care only serves the Southern California region at this time.

# For More Information About Kaiser Permanente

## **Arif Shaikh**

Director, Medi-Cal Line of Business

[Arif.U.Shaikh@kp.org](mailto:Arif.U.Shaikh@kp.org)

## **Community Health Contacts**

### **Cecilia Arias**

Community Health Manager- Riverside County

[cecilia.x.arias@kp.org](mailto:cecilia.x.arias@kp.org)

### **Martha Valencia-Rodriguez**

Community Health Manager - San Bernadino County

[martha.r.valencia@kp.org](mailto:martha.r.valencia@kp.org)

# How to Submit a Referral for ECM or Community Supports

KP has a no-wrong-door approach for referrals:

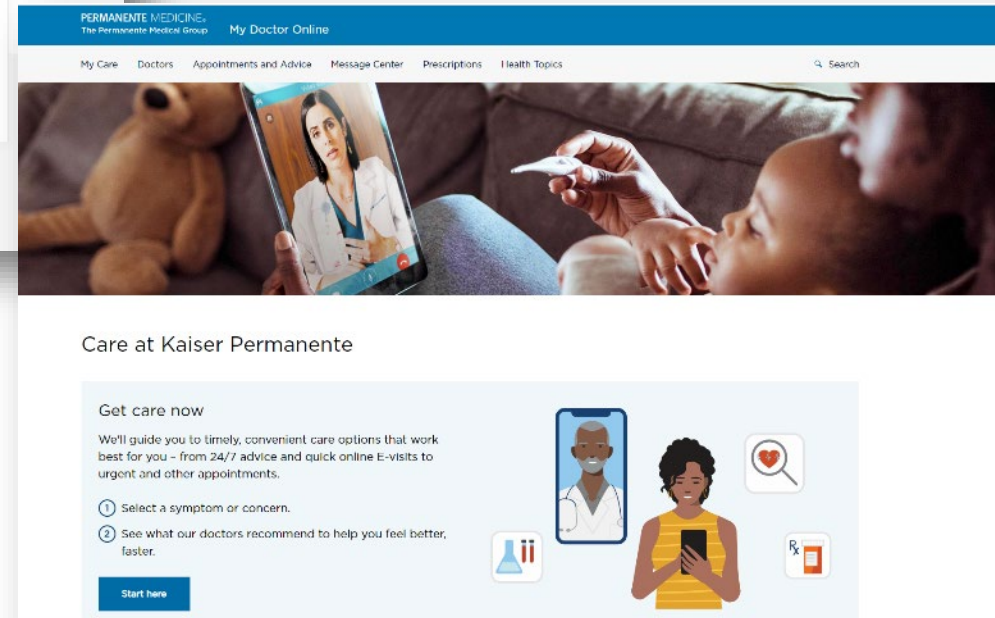
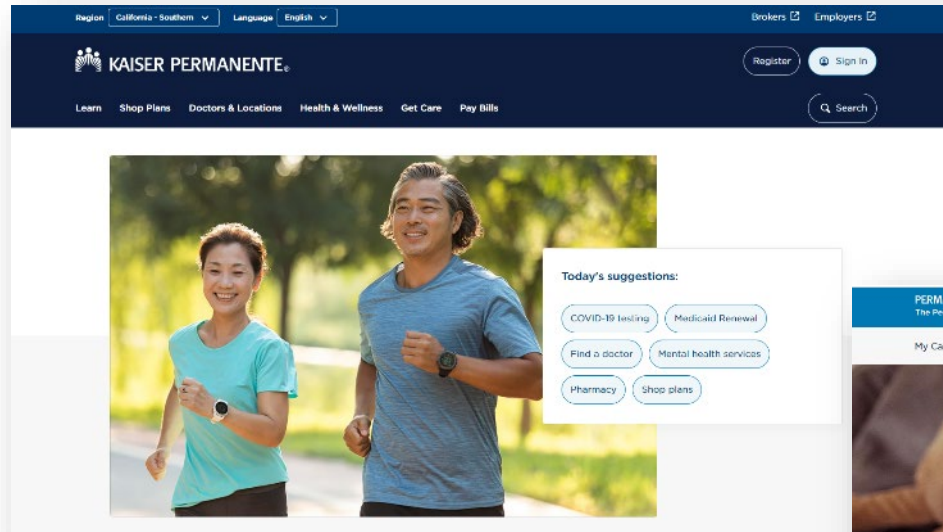
- Referrals are accepted from any source (members, providers, family, community organizations, etc)
- Use of the KP referral form is recommended, however, KP will accept any referral form created by another Medi-Cal plan. Simply send the completed form to the same KP email address noted below.
- Referrals may be placed via email or via phone

	Sacramento/Central Valley	Rest of Northern California	Southern California
Cities	Amador, El Dorado, Fresno, Kings, Madera, Mariposa, Placer, Sacramento, San Joaquin, Stanislaus, Sutter, Tulare*, Yolo, Yuba	Alameda, Contra Costa, Marin, Napa, San Francisco, San Mateo, Santa Clara, Santa Cruz, Solano, Sonoma,	Kern, Imperial, Los Angeles, Orange, Riverside, San Bernardino, San Diego, Tulare*, Ventura,
Phone	1-833-721-6012 (TTY 711) Monday-Friday (closed major holidays) 9:00 a.m. to 4:45 p.m.	1-833-952-1916 (TTY 711) Monday-Friday (closed major holidays) 9:00 a.m. to 4:45 p.m.	1-866-551-9619 (TTY 711) Monday-Friday (closed major holidays) 8:30 a.m. to 5:00 p.m.
Email	Send completed <a href="#">referral form</a> to REGMCDURNs-KPNC@kp.org with the subject line "ECM Referral" or "CS Referral"		Send completed <a href="#">referral form</a> to RegCareCoordCaseMgmt@kp.org with the subject line "ECM Referral" or "CS Referral"

\*Tulare Central Valley: 93618, 93631, 93646, 93654, 93666, 93673;  
Tulare Southern CA: 93238, 93261.

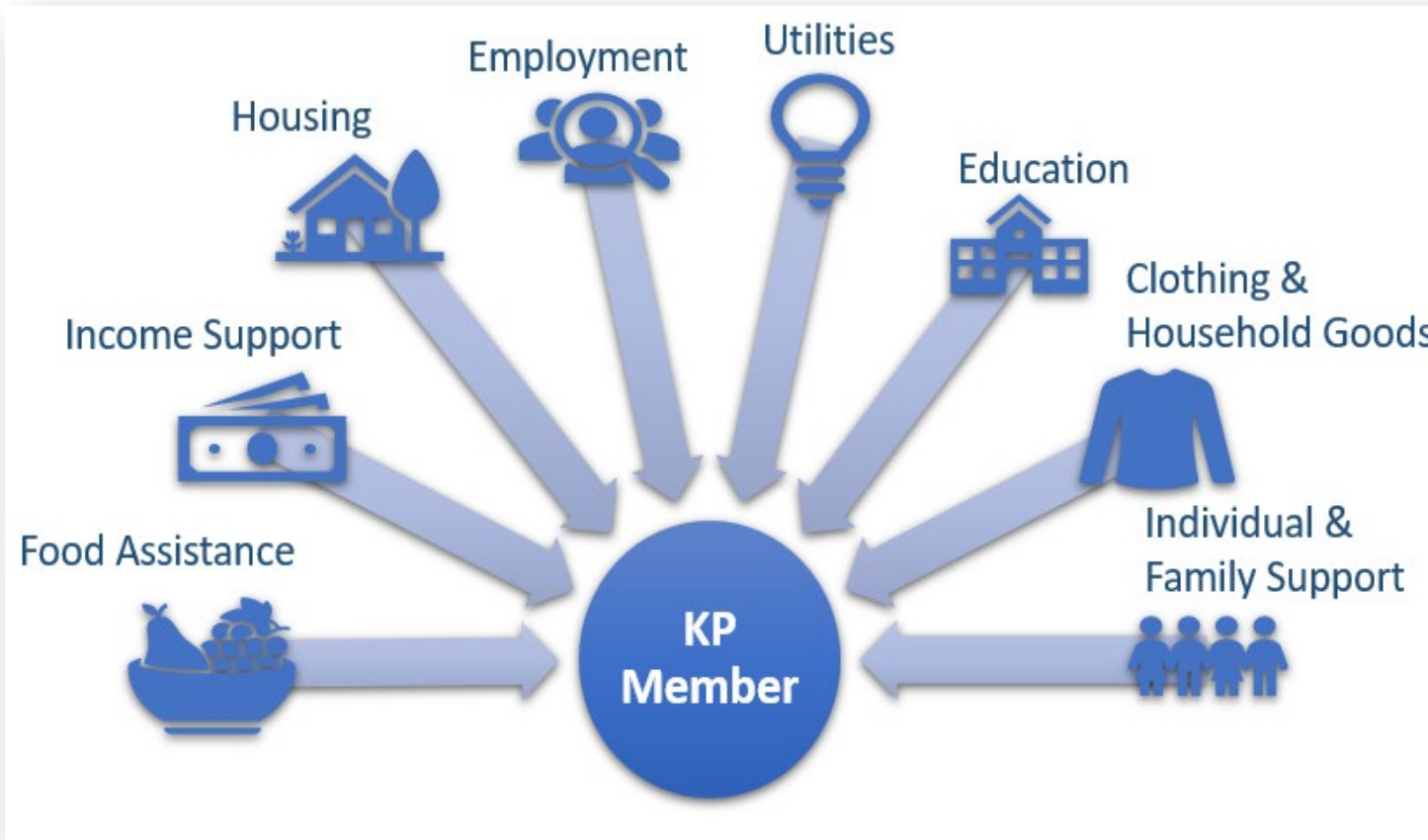
# KP Member Services

- ✓ Urgent advice and appointment services available by phone 24/7 from live KP staff.
- ✓ Services available in multiple languages.



Our robust web site and mobile app allow enrollees to access medical advice, make appointments, message their care providers, order medications, and much more.

# NEW from Kaiser Permanente: Connections



## Connecting member with community resources

When KP members and patients need support with social needs such as housing, healthy food, transportation, utility bills, and more, we can help.

These self-service options are available as an added layer of support for members who need help finding local social services and community-based programs in their areas.

Members/non-members can find assistance at:

**KP.org/communityresources** (Self-Service Community Resource Directory)

**(800) 443-6328** – Toll-free number to speak with a resource specialist (M-F, 8a-5p local time)

# Connections is helping members in need

Mom worried about her homeless son is directed to emergency food and housing resources in son's area

Husband and wife awaiting surgery and can't cook are connected to agency providing prepared-foods

Connections agents began working with individuals facing significant – sometimes heart-wrenching – need. Connections services include:

- Assessing member's needs using screening questions and offering tailored recommendations of resources in the member's community
- Providing high-touch service, including follow-up calls to members\* within 48 hours after resources are shared to ensure they received assistance.
- Hold three-way calls with the member and the community provider.
- Augmenting data available in the Resource Directory to ensure information provided is accurate and up to date

*\*those who opt-in to a follow-up call*

Caller connected to family services support for husband receiving dialysis

Sister overwhelmed because her brother is in a wheelchair and keeps falling is directed to assisted living resources



# Kaiser Permanente Community Support Hub

August 2, 2023

## Social health resources are just a click or call away

The Kaiser Permanente Community Support Hub can help members find community resources to address their total health.



Having enough food to eat, money to pay the bills, and a safe place to call home is essential for good health. That's why Kaiser Permanente launched the [Kaiser Permanente Community Support Hub](#).

After years of work to understand and address social factors that affect our members' health, Kaiser Permanente created the hub — consisting of a free, self-service, online resource directory, and more. It enables Kaiser Permanente to proactively screen more members for social needs and connect those who need support to community-based resources and government assistance programs.

In 2022, Kaiser Permanente screened millions of members for social health needs — asking, for example, if they needed help paying rent, accessing healthy food, or securing other essentials that lead to good health. We then connected more than 170,000 members to community-based resources. Kaiser Permanente will continue to expand that support through the hub, with the goal of serving every member who wants social needs assistance.



### Assistance programs and community resources



#### Digital equity

##### Learn about the Affordable Connectivity Program

Check eligibility for this government program that helps fund internet service & devices.



#### Social connections

##### Social connections for older adults

Fill your calendar and, at the same time, grow a community of others who share your interests.



#### Food

##### Wondering what SNAP could do for you?

Explore the Supplemental Nutrition Assistance Program's benefits and see if you're eligible to apply.



#### Financial wellness

##### You may be able to claim additional tax credits

Learn about this free service that can help you look for credits you may be eligible for.



### Find community resources near you

If you need help with food, housing, paying for internet and other utilities, and more, explore our directory of community-based programs and services in your area.

[Search the directory](#)



### Need extra help with your search?

You can also talk to a Kaiser Permanente resource specialist. Get started by calling [1-800-260-7445](tel:1-800-260-7445) (TTY [711](tel:711)), Monday through Friday, 8 a.m. to 5 p.m. in your time zone.

[Call us today](#)



# Overview of the Student Behavioral Health Incentive Program (SBHIP)

SBHIP provides incentives to increase coordination among Medi-Cal MCPs, Local Education Agencies, and county offices of mental health to increase access to preventive, early intervention, and behavioral health services by school-affiliated behavioral health providers for TK-12 children in public schools.

## Program Objectives

- Break down silos and improve coordination of behavioral health services for children and adolescents enrolled in Medi-Cal through increased communication with schools, school affiliated programs, managed care providers, counties, and providers.
- Increase the number of TK-12 students enrolled in Medi-Cal receiving behavioral health services.
- Increase non-specialty services on or near school campuses.
- Address healthy equity gaps, inequalities and disparities in access to behavioral health services.

## Duration & Investment

- ~ \$389 million over 3 years for incentive payments to Medi-Cal MCPs that meet predetermined goals and metrics. SBHIP launched 1/1/2022 and will conclude 12/31/2024.

## Who will be impacted?

- K-12 students in public schools; while Medi-Cal enrollment was a factor in school district selection, SBHIP interventions are for all students.

## How is SBHIP implemented?

- SBHIP is being implemented in phases.
  - Year 1 focused on completion of a behavioral health Needs Assessment. Needs Assessments informed selection of behavioral health Targeted Interventions. After the behavioral health Needs Assessment was completed (by December 31, 2022), the MCPs and their local partners selected Targeted Interventions and submitted project plans to DHCS.
  - Years 2-3 will on Targeted Intervention implementation.
- Targeted Interventions were selected from a list of 14 broad Targeted Intervention categories defined by DHCS. All counties have selected their Targeted Interventions, received approval from DHCS and are in the process of implementing the Targeted Interventions.

# Kaiser Permanente's Engagement in the Student Behavioral Health Incentive Program

Kaiser Permanente has been an active participant in SBHIP since its launch 1/1/22. Kaiser Permanente views SBHIP as an important opportunity to break down siloes between health and education and support the operational infrastructure needed to increase access to coordinated and sustainable school-based health care.

## What has KP's work on SBHIP looked like to date?

- To date, KP's work on SBHIP has primarily focused on supporting implementation in our five, current direct contract counties: Amador, El Dorado, Placer, Sacramento and San Diego.
  - Year one accomplishments:
    - Conducted SBHIP needs assessments for each of the five counties
    - Selected SBHIP targeted interventions for each county
    - Distributed \$1.56 M in SBHIP funding to counties
  - Year two accomplishments:
    - Supported implementation of SBHIP targeted interventions
    - Distributed \$3.4 M in SBHIP funding to counties
- While the SBHIP team is tracking implementation of all interventions and participating in county SBHIP meetings, the team is focusing deeper engagement on contracting and data sharing interventions. Other interventions counties selected include expanding the behavioral health workforce, establishing new wellness centers, implementing substance use and suicide prevention programs and increasing access to care teams.

## Impact of KP's direct contract on SBHIP

- KP worked closely with current Medi-Cal MCPs in the 32 counties to develop and submit SBHIP transition plans to DHCS in June 2023.
- KP will support implementation of existing Targeted Interventions in each county and sees SBHIP as an important opportunity to strengthen relationships with education and health plan partners.

# SBHIP in Riverside and San Bernadino

Beginning 1/1/2024, Kaiser Permanente will be an SBHIP partner in all 32 counties in our footprint, including Riverside and San Bernadino. Since current Medi-Cal MCPs are not exiting Riverside or San Bernadino, KP will not receive/distribute SBHIP funds in these counties. KP looks forward to working with SBHIP partners and supporting implementation of SBHIP interventions in these counties.

	Riverside	San Bernadino
<b>Total SBHIP Intervention \$</b>	\$24,961,889	\$23,813,446
<b>Intervention #1</b>	Establish care teams	Establish care teams
<b>Intervention #2</b>	Increase access to care for historically underserved populations	Implement a substance use prevention curriculum for 6-12 grade students
<b>Intervention #3</b>	Expand the school behavioral health workforce	Expand the school behavioral health workforce
<b>Intervention #4</b>	Expand the number of wellness centers/spaces	Expand the number of wellness centers/spaces
<b>SBHIP Partners</b>	<p><b>Health Plans:</b> Inland Empire Health Plan, Molina Healthcare, Kaiser Permanente</p> <p><b>Education:</b> Riverside County Office of Education, Hemet Unified School District, Leadership Military Academy, Nuview Union School District, Palm Springs Unified School District</p>	<p><b>Health Plans:</b> Inland Empire Health Plan, Molina Healthcare, Kaiser Permanente</p> <p><b>Education:</b> San Bernadino County Superintendent of Schools, Ontario-Montclair School District, PAL Charter Academy, Rialto Unified School District, Victor Valley Union High School District, San Bernardino City Unified School District</p>

# Kaiser Permanente Community Health

Thriving Schools Initiative

Educational Theatre

Grant Program

Health Education

College and Career Readiness Programs

Youth Mental Health First Aid Training

## District Partners\*

Apple Valley  
Colton Joint  
Fontana  
Hesperia  
San Bernardino City  
Victor Elementary  
Rialto

Alvord  
Riverside  
Moreno Valley  
Val Verde

Learn more at [thrivingschools.kaiserpermanente.org](https://thrivingschools.kaiserpermanente.org)

*\*Current partners from the IE*