

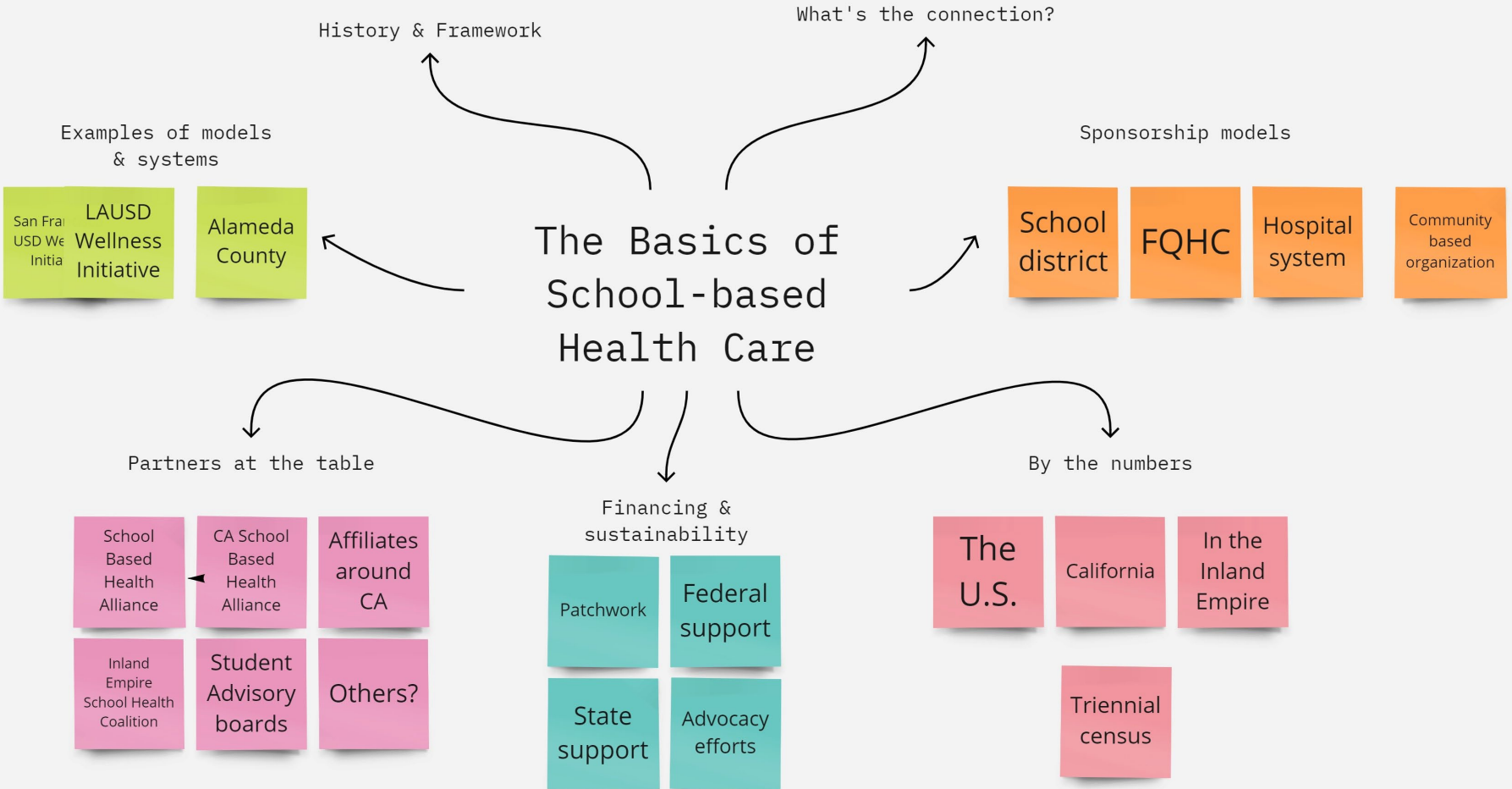
# School-Based Health Care Model

SBHC Academy Session  
Inland Empire School Health Coalition  
Friday, December 1, 2023



# The School Based Health Care Model





# WHAT IS A SCHOOL-BASED HEALTH CENTER?

A student-focused health center or clinic:

- Located **on or near** a K-12 school campus
- Organized through school, community, and health provider **relationships**
- That provides age-appropriate, **clinical** health care services



SBHCs **may provide** primary medical care, behavioral health services, **or** dental care onsite or through mobile or telehealth

# SBHCs & Wellness Centers

## Wellness Centers

### **Calming Rooms**

Welcoming, safe drop-in spaces without any clinical services, staffed by some caring adult

### **Mental Health only**

Calming rooms plus some on-site clinical behavioral health services, provided by school-employed staff and/or co-located CBOs

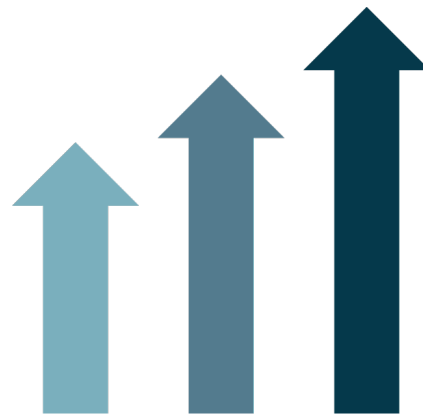
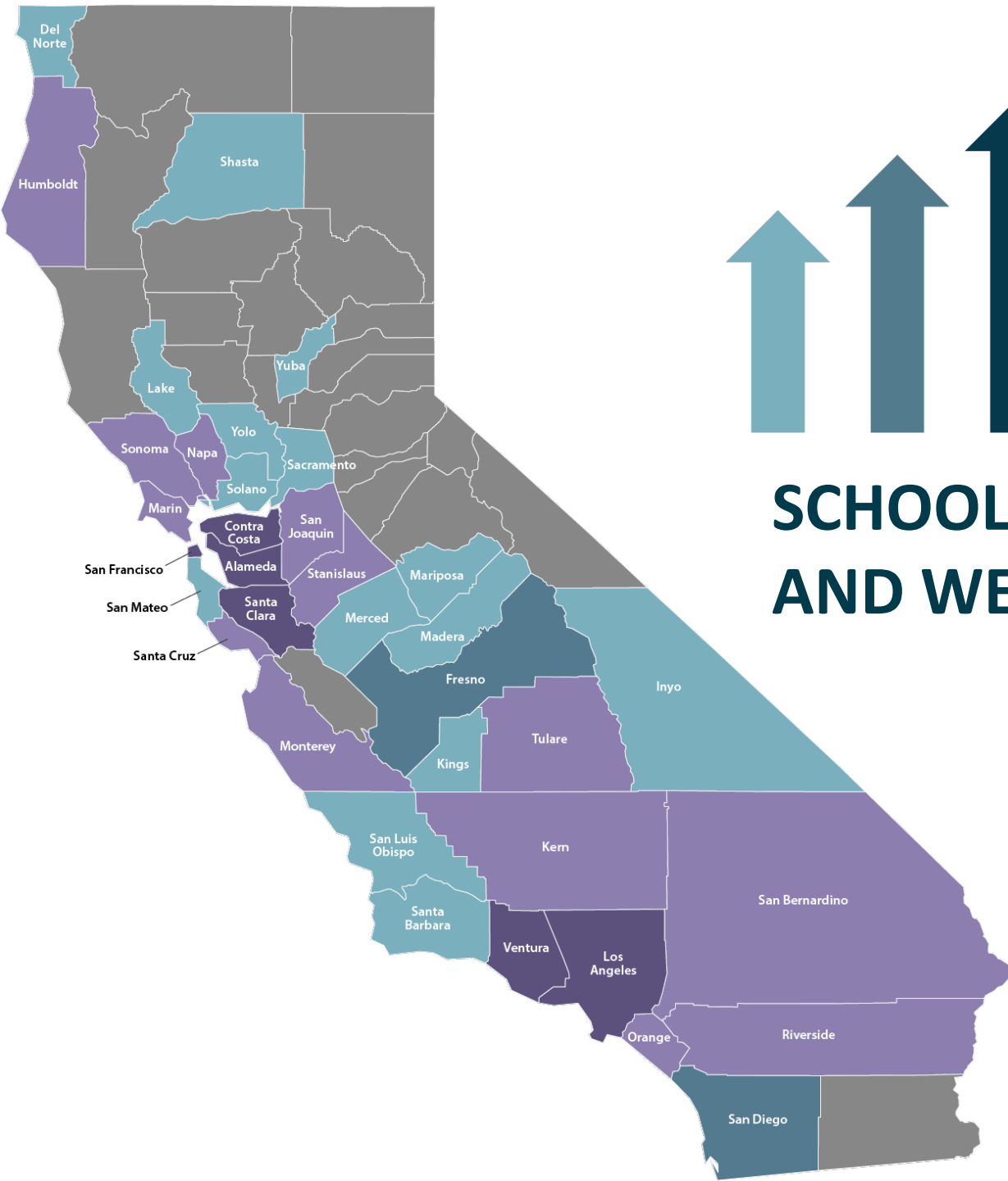
### **Mental Health+**

Centers with mostly clinical behavioral health plus some other services, like a school nurse and/or sexual/repro health

### **Comprehensive**

Clinics with full-scope of health services, including physical medical care, behavioral health, and oral health

**School-based health centers!**



346

**SCHOOL-BASED HEALTH  
AND WELLNESS CENTERS**

# WHAT SERVICES ARE PROVIDED?

**Mental Health** 77%

**Medical** 67%

**Youth Engagement** 62%

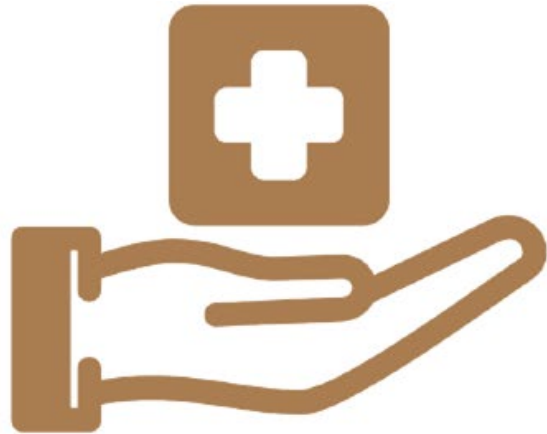
**Dental Prevention** 49%

**Reproductive Health** 48%

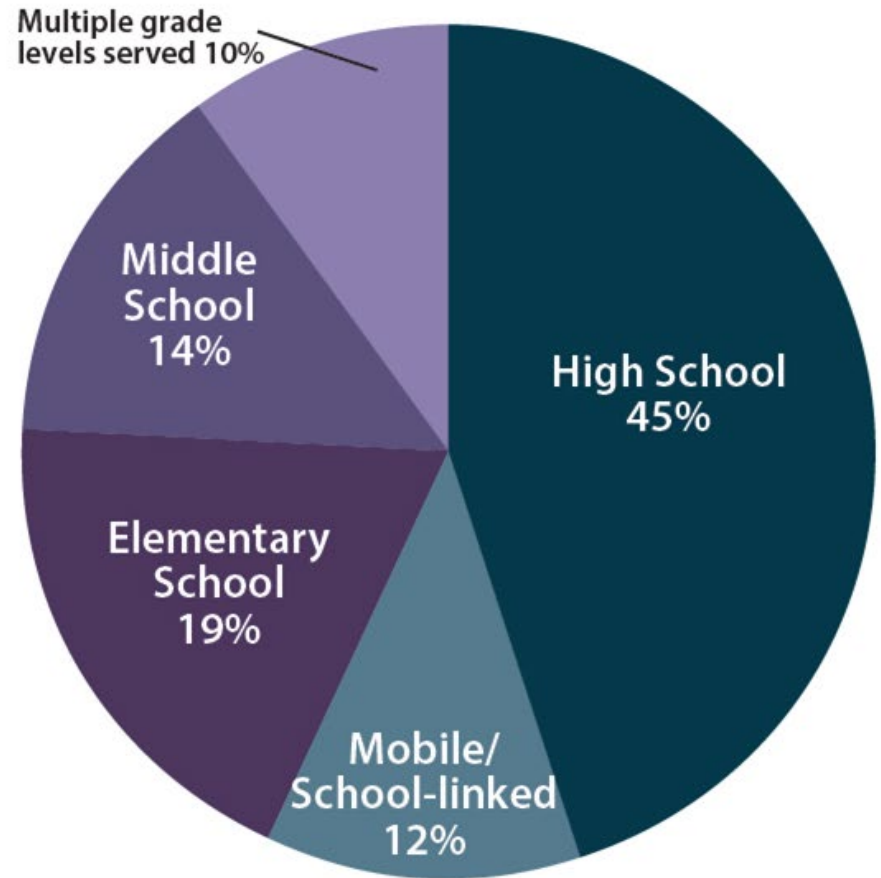
**Dental Treatment** 29%



# WHO IS SERVED?

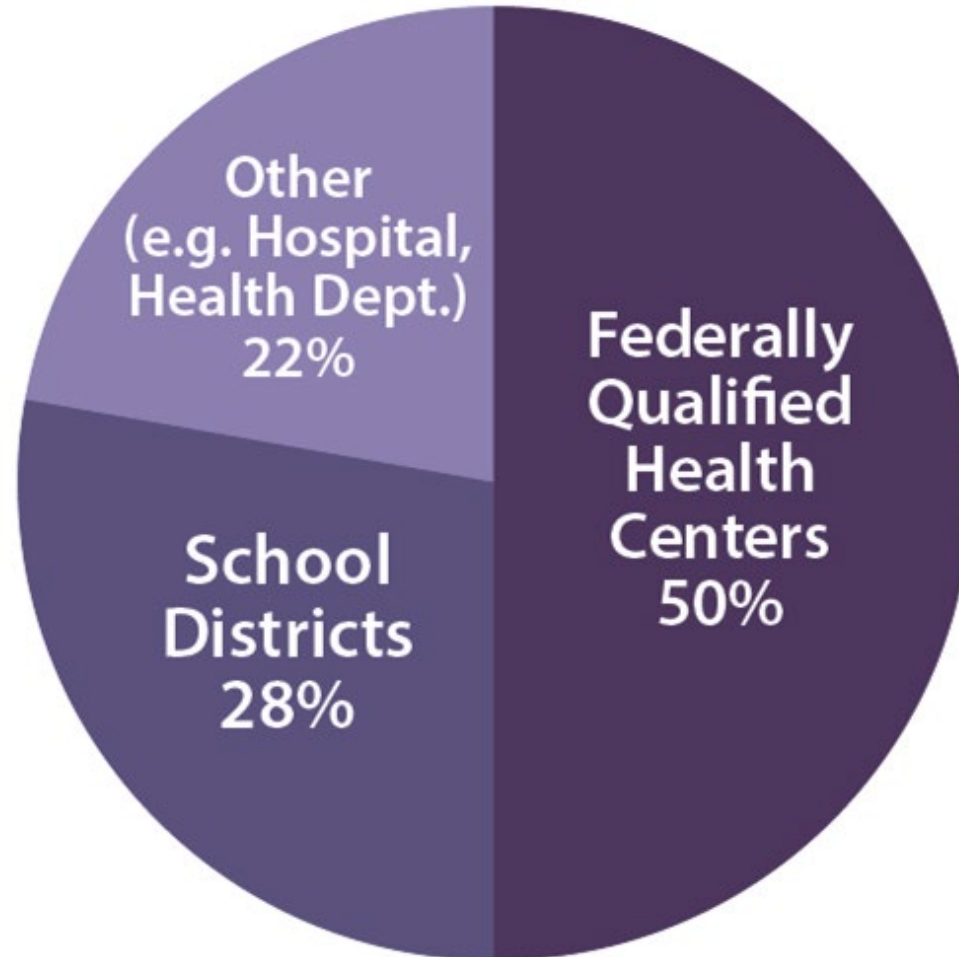


**53%** of SBHCs serve broader community





# WHO RUNS SCHOOL-BASED HEALTH CENTERS?





Home

Bill Information

California Law

Publications

Other Resources

My Subscriptions

[Bill Information](#) >> [Bill Search](#) >> Text

[Bill PDF](#) | [Add To My Favorites](#)

## **AB-1940 School-Based Health Center Support Program.** (2021-2022)

**February 10, 2022**

---


An act to amend Section 49419 of the Education Code, and to amend Sections 124174, 124174.2, 124174.3, and 124174.4 of, to amend and renumber Section 124174.6 of, and to repeal Section 124174.5 of, the Health and Safety Code, relating to pupil health.

## LEGISLATIVE COUNSEL'S DIGEST

AB 1940, Salas. School-Based Health Center Support Program.

Existing law requires the State Department of Public Health, in cooperation with the State Department of Education, to establish a Public School Health Center Support Program to assist school health centers, which are defined as centers or programs, located at or near local educational agencies, that provide age-appropriate health care services at the program site or through referrals, as specified.

This bill would rename the program as the School-Based Health Center Support Program and would redefine a school-based health center to mean a student-focused health center or clinic that is located at or near a school or schools, is organized through school, community, and health provider relationships, and provides age-appropriate, clinical health care services onsite by qualified health professionals. The bill would authorize a school-based health center to provide primary medical care, behavioral health services, or dental care services onsite or through mobile health or telehealth.



A few key  
points from  
our national  
SBHA



**SCHOOL-BASED  
HEALTH ALLIANCE**

The National Voice for School-Based Health Care

# Common Health Sponsor Responsibilities

Health  
sponsor

- Manage the consent process for the SBHC
- Employ, supervise, and credential SBHC staff
- Provide malpractice insurance for SBHC providers
- Bill insurers
- Complete and regularly update Pro Forma (financial projections) for SBHC services
- Provide health information technology infrastructure
- Provide medical equipment and supplies
- Drive quality improvement
- Conduct outreach for the SBHC
- Lead/member of planning group/advisory committee



# Common School Partner Responsibilities

School  
partner

- Provide space for the SBHC
- Implement policies that facilitate students' use of the SBHC during the school day
- Conduct outreach in partnership with the SBHC (e.g. consents)
- Liaison with school-based health center
- Lead/member of planning group/advisory committee



# Some key learnings

- Most SBHCs operate via a “traditional” model (offering care from a fixed location on the school campus)
- Most SBHCs offer primary care, behavioral health, and expanded services (e.g., oral health, vision, nutrition)
- For primary care, nurse practitioners are the most commonly reported provider
- SBHCs rely on a diversity of funding sources. Most SBHCs bill insurance.
- Health Centers are the most common SBHC sponsor, followed by hospitals, then health departments, school districts, and other sponsor types.

For more detail on our Census findings, please see our report [here](#).

Total responses to the survey in 2022: n=1,518  
(approximately 40% of SBHCs nationwide)



# A few examples of wellness models







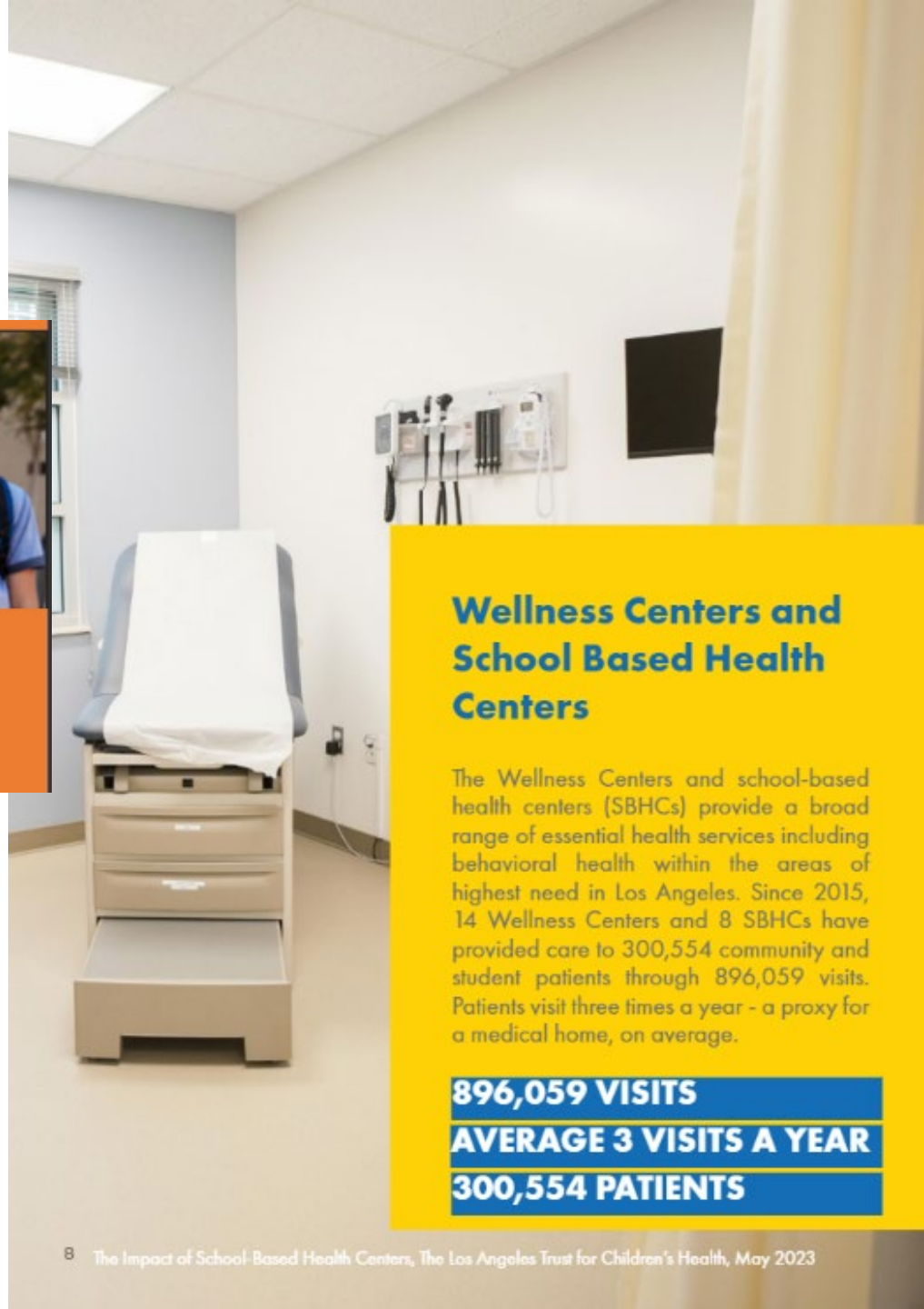
The San Francisco Wellness Initiative is a groundbreaking program dedicated to improving the health, well-being and academic success of the city's 16,000 public high school students at 19 campuses. In safe, confidential settings, experts in adolescent health at onsite Wellness Centers help teens gain the skills they need to cope with complex issues such as stress, trauma, suicide, bullying, depression, self-esteem, drug and alcohol use, sexual health and relationships. Students learn positive, lifelong habits that contribute to their well-being and

success, and ultimately, to the health of the communities in which they live.

The Wellness Initiative is the only school-based program for adolescent health and wellness of its kind. The Initiative is made possible through a unique partnership between the San Francisco Department of Children, Youth and Their Families (DCYF), the San Francisco Department of Public Health (DPH) and the San Francisco Unified School District (SFUSD). By leveraging the resources of each agency, student health is addressed from a citywide perspective.



## Wellness Centers in Los Angeles Unified School District



### Wellness Centers and School Based Health Centers

The Wellness Centers and school-based health centers (SBHCs) provide a broad range of essential health services including behavioral health within the areas of highest need in Los Angeles. Since 2015, 14 Wellness Centers and 8 SBHCs have provided care to 300,554 community and student patients through 896,059 visits. Patients visit three times a year - a proxy for a medical home, on average.

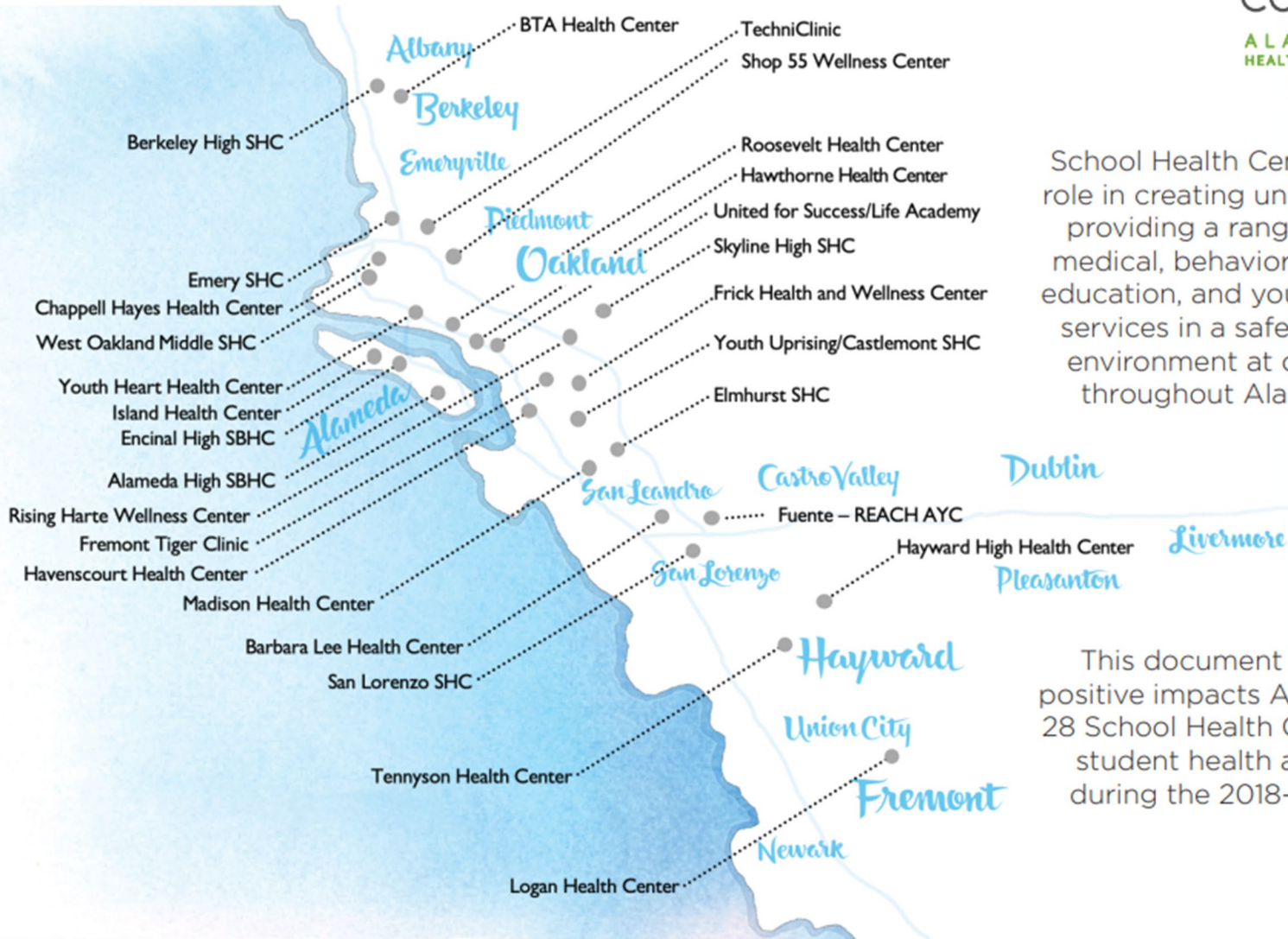
**896,059 VISITS**

**AVERAGE 3 VISITS A YEAR**

**300,554 PATIENTS**

# SCHOOL HEALTH CENTERS

## 2018-19 SCHOOL YEAR BY THE NUMBERS



School Health Centers play a vital role in creating universal access by providing a range of integrated medical, behavioral health, health education, and youth development services in a safe, youth-friendly environment at or near schools throughout Alameda County.

This document highlights the positive impacts Alameda County's 28 School Health Centers made on student health and well-being during the 2018-19 school year.

## Download Vision to Reality

