



Children and Youth Behavioral
Health Initiative (CYBHI):
**Fee Schedule and School-
Linked Partnership and
Capacity Grant**

Inland Empire School Health Coalition

May 10, 2024

San Bernardino County Superintendent of Schools

- Farrah Northcott, RD, Director, Healthy SBCSS
- James Soward, Coordinator, Reaching the Whole Child
- Rebekah Smith, SMAA Manager, Region 10

www.healthysbcss.net



@HealthySBCSS

Who We Are

In alignment with the Countywide Vision, we champion a self-sustainable system of seamless, accessible, and effective services that advance wellness, recovery, and resiliency, integration of primary care and mental health supports to provide a full range of health creating opportunities for individuals, families, and communities.

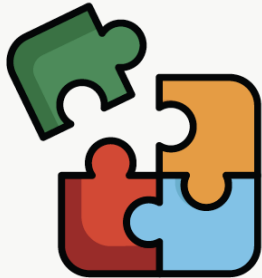
Role of Healthy SBCSS:



Provide
centralized support
for school districts



Build
Systems



Bring together
cross-sector
partners



Partners in
Student Health
& Wellness



Work to achieve
health-equity for
students & families



Training and
Technical
Assistance

CYBHI Workstreams

Link to CYBHI's work is divided strategic workstreams

Workforce Training and Capacity		Behavioral Health Ecosystem Infrastructure		Coverage	Public Awareness
Wellness Coach Workforce (HCAI)	<u>Trauma-Informed Educator Training</u> (CA-OSG)	School-Linked Partnership and Capacity Grants (DHCS)	Student Behavioral Health Incentive Program (DHCS)	Enhanced Medi-Cal Benefits – Dyadic Services (DHCS)	Public Education and Change Campaigns (CDPH)
Broad Behavioral Health Workforce Capacity (HCAI)	Youth Mental Health Academy (HCAI)	Behavioral Health Continuum Infrastructure Program (DHCS)	Youth Suicide Reporting and Crisis Response Pilots (CDPH)		ACEs and Toxic Stress Awareness Campaign (CA-OSG)
Behavioral Health Virtual Services Platform and Next Generation Digital Supports (DHCS)				Statewide Multi-Payer Fee Schedule for School-Linked Behavioral Health Services (DHCS/DMHC)	Targeted Youth Suicide Prevention Grants and Outreach Campaign (CDPH)
Healthcare Provider Training and e-Consult (DHCS)					Parent Support Video Series (DHCS)
Scaling Evidence-Based and Community-Defined Practices (DHCS)					
CalHOPE Student Services DHCS) (Ended Transition to					
Mindfulness, Resilience and Well-being Grants (DHCS)					
Youth Peer-to-Peer Support Program (DHCS)					

CYBHI Workstreams: Fee Schedule and Capacity Grant

Multi-Payer Fee Schedule

New funding source to support student mental health. (Medi-Cal, Commercial and Disability Insurer) to reimburse covered services

Capacity Grant (Allocation)

One-time investment to build operational readiness for the multi-payer fee schedule

Multi-Payer Fee Schedule

Coverage

Enhanced Medi-Cal
Benefits – Dyadic
Services (DHCS)

Statewide Multi-Payer
Fee Schedule for
School-Linked
Behavioral Health
Services
(DHCS/DMHC)

[Statewide Multi-Payer Fee Schedule for School Linked Behavioral Health Services \(Fee for Service\)](#)

- Build a fee schedule for schools to bill for both Medi-Cal and Commercial Insurance
- Implemented in cohorts starting in January 2024 - Cohort of Early Adopters
- Where can activity happen: at schools or community locations if a school-linked service.
- Who can bill:
 - TK-12: COEs (including COEs that also act as LEAs) or LEAs (i.e., school districts and charter schools in
 - Higher education (Students up through 25)
 - At the practitioner level, this provider network could include all of the following:
 - Pupil Personnel Services (PPS) credentialed providers (i.e., PPS school psychologists, PPS social workers, PPS counselors, and registered credentialed school nurses) employed by or contracted with the LEA;
 - Licensed or supervised mental health specialists employed by or contracted with the LEA; and/or,
 - Community-based organizations or behavioral health practitioners
 - *Wellness Coaches will be added in January 2025

Provider Types and Services

Provider Types

School-Based Licensed Mental Health Practitioners

School Linked Licensed Mental Health Staff

PPS Credentialed Practitioners

Certified Wellness Coaches (Jan 2025)

Fee Schedule Services

Psychoeducation

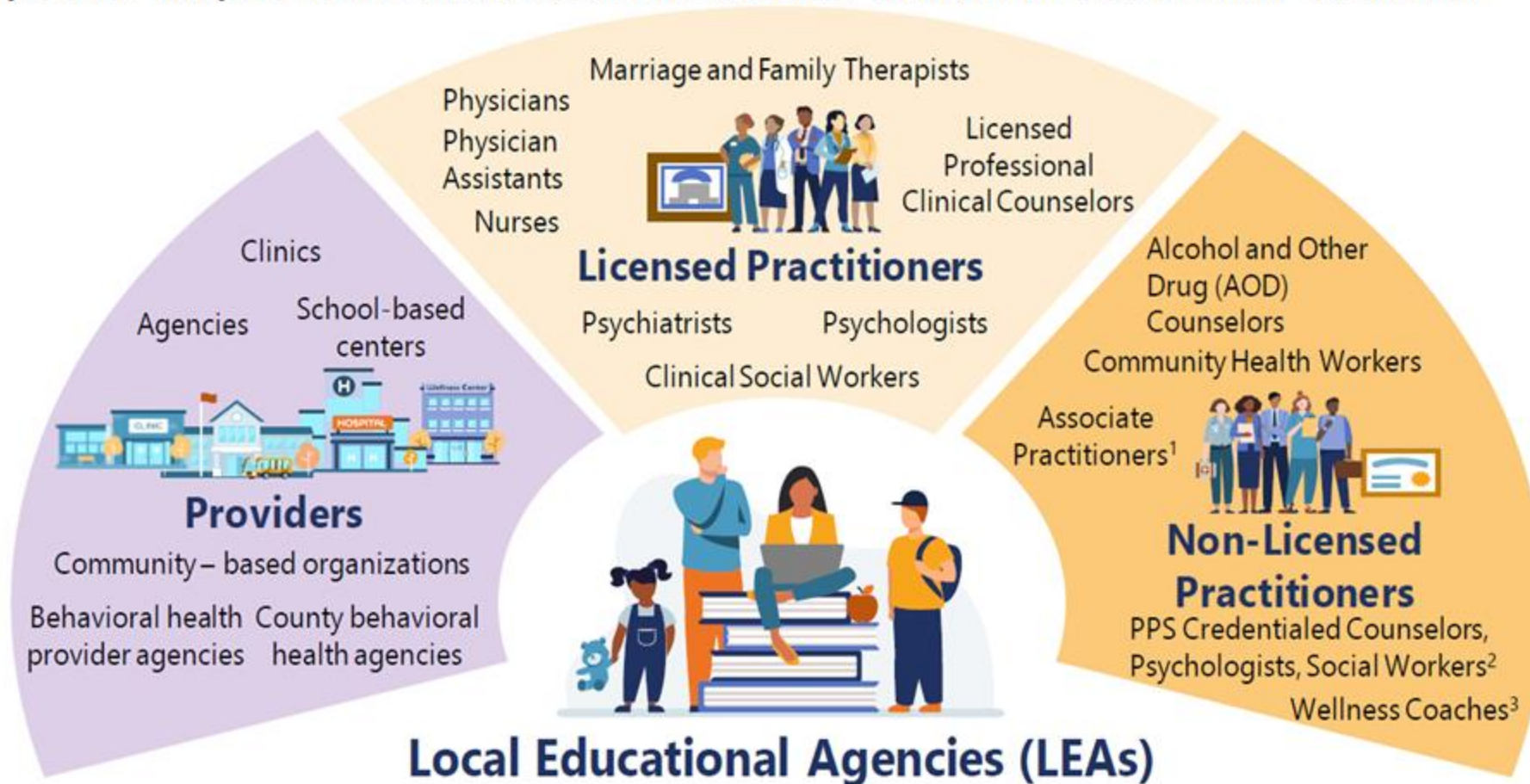
Screening and Assessment

Therapy

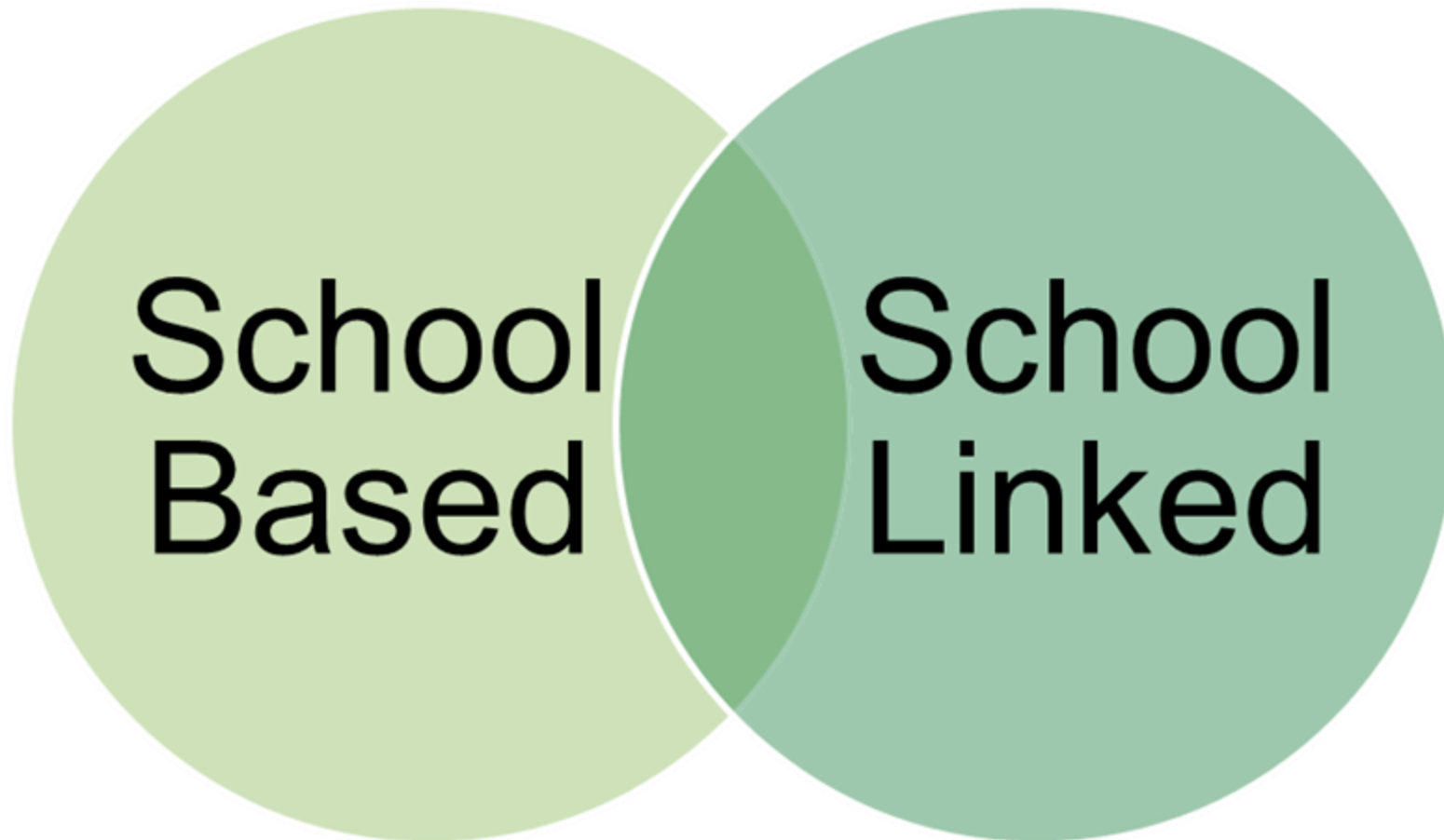
Care Coordination

Provider Types Expanded Example

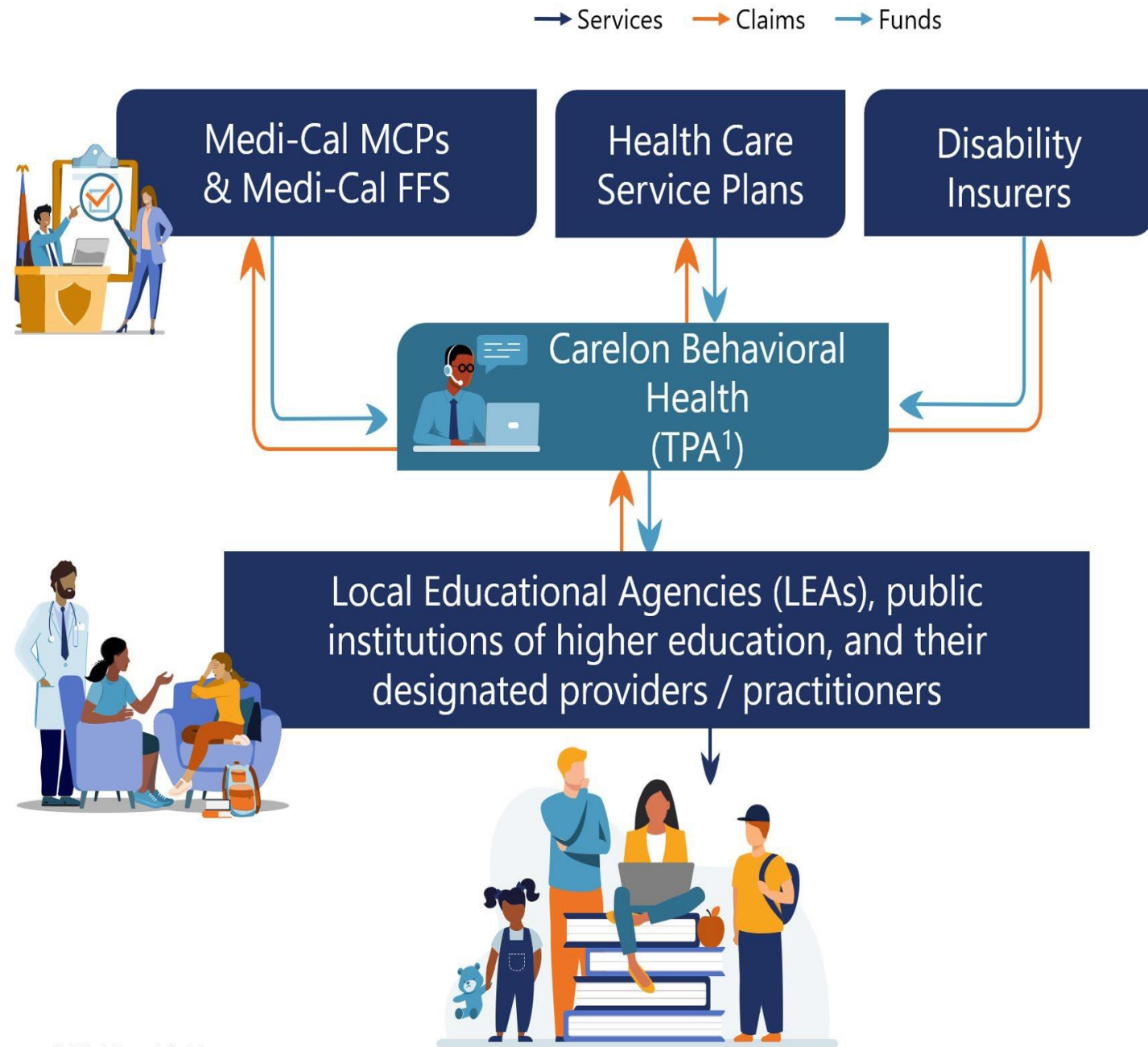
All providers and practitioners must have a National Provider Identifier (NPI) and be Medi-Cal enrolled



Where Can Activity Happen?



How will the Multi-payer Fee Schedule Work?



1. Third-Party Administrator

Source: CYBHI fee schedule guidance document

Permissible Use of Funds

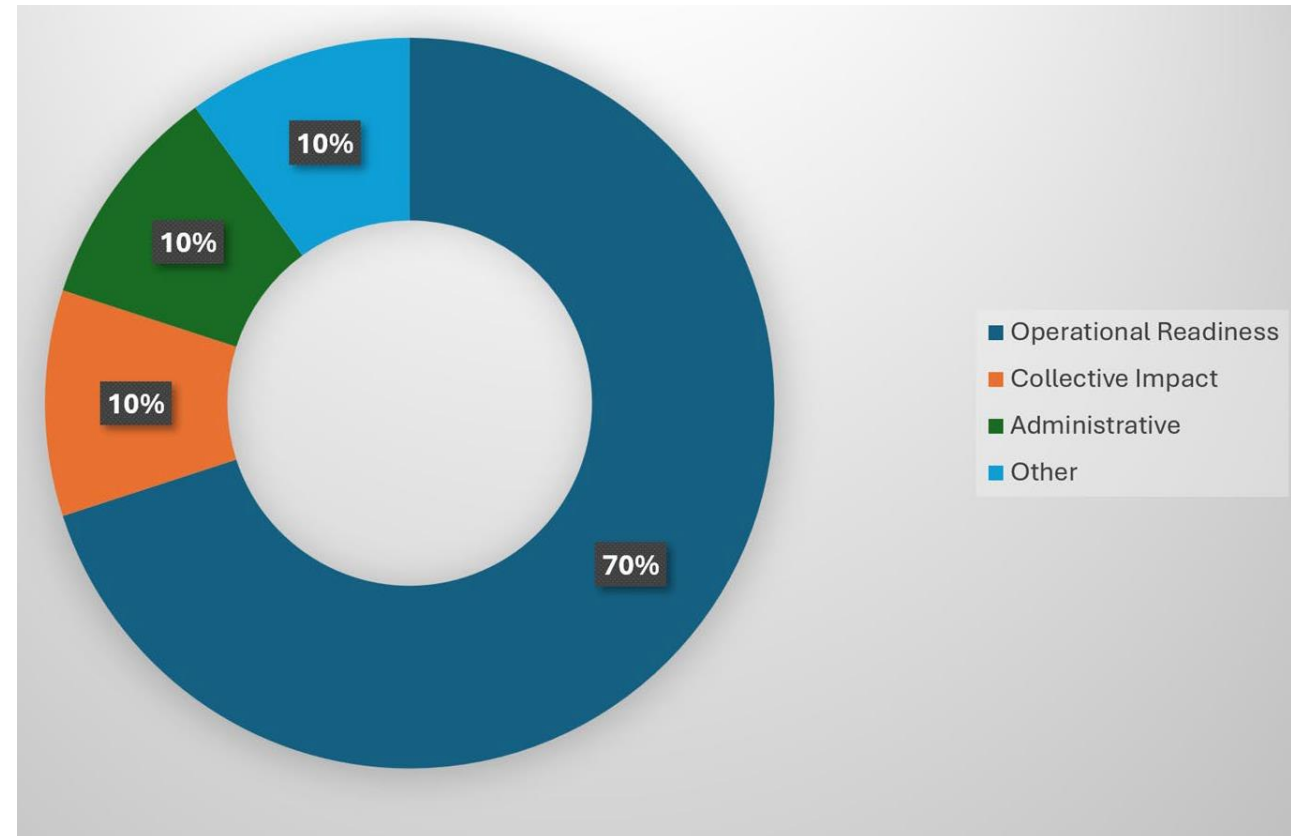
Behavioral Health Ecosystem Infrastructure

School-Linked Partnership and Capacity Grants (DHCS)

Student Behavioral Health Incentive Program (DHCS)

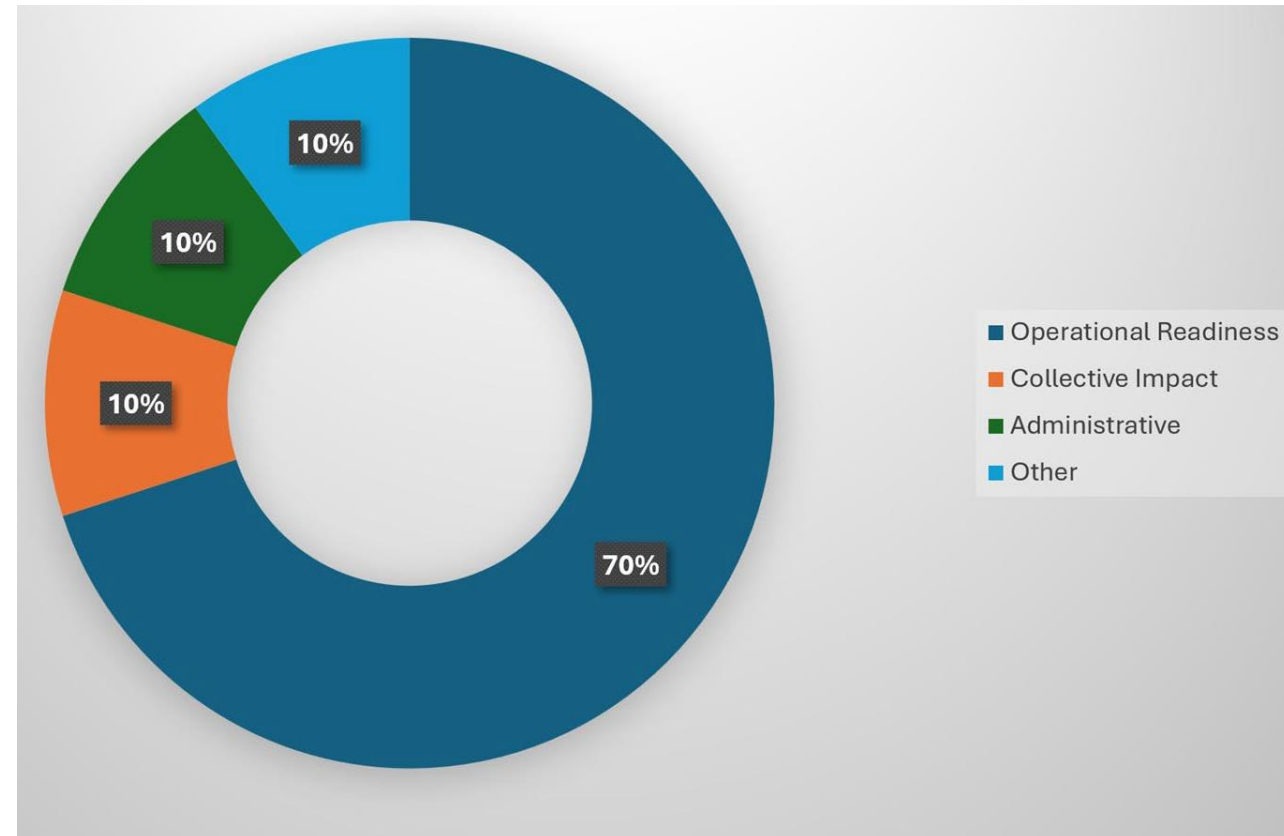
School-Linked Partnership and Capacity Grants

- Strengthen school-linked behavioral health services and provide California public K-12 schools.
- Support institutional readiness for the [statewide multi-payer fee schedule](#) by providing resources to schools to expand its provider capacity, develop critical partnerships, and build the necessary infrastructure.



Permissible Use of Funds

- At least 70% of each county's funding should support LEAs as they achieve operational readiness.
- Funds should address one or more of the following:
 - Medi-Cal enrollment of sites
 - Service delivery infrastructure and capacity building
 - Data collection and documentation
 - Billing infrastructure } (EHR)
- Up to 10% of funding can be dedicated to projects that build a necessary collaborative infrastructure for coordinated systems that focus on the needs of children and families.
- Up to 10% of funding can be reserved by the COE to offset any COE administrative costs.
- Up to 10% of each county's funds can be dedicated to other expenditures that the COE deems necessary to strengthen the COE or LEA's ability to provide behavioral health services and supports to students.



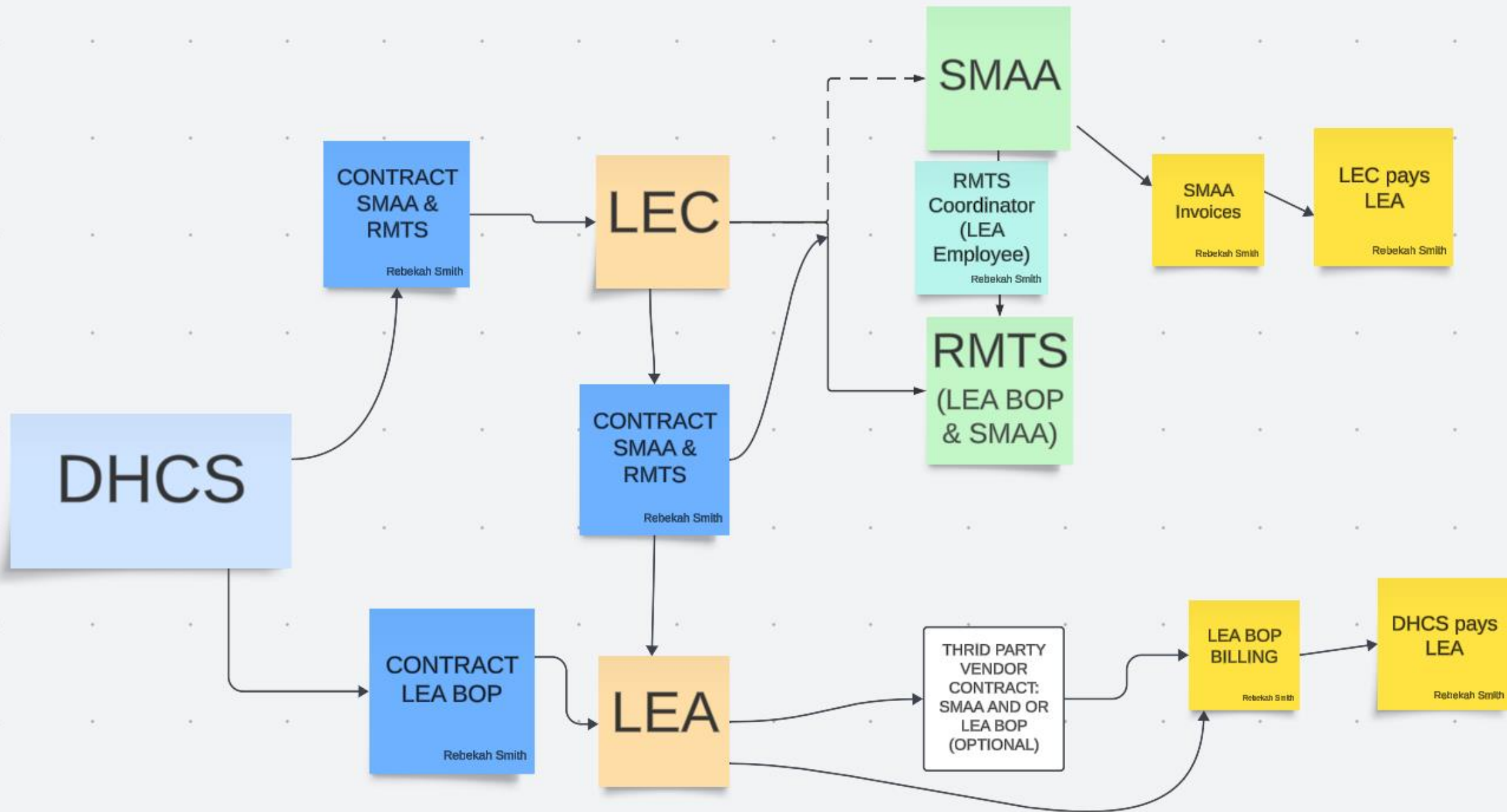
Understanding Financial Opportunities for LEAs

SMAA (School Based Medi-Cal Administrative Activities)

- LEAs can join this program to receive unrestricted reimbursement from DHCS for certain administrative activities related to Medi-Cal.

LEA BOP (Local Educational Agency Billing Option Program)

- LEAs can join this program to receive restricted reimbursement from DHCS for direct services provided to students (which includes pre and post time when the student is not present).
 - LEAs must contract with their local LEC (Local Educational Consortia) to participate in these programs.
 - LEC is responsible for training LEAs in RMTS (Random Moment Time Survey) which is required to participate in either program.
 - TSPs cannot be included if they are 100% Fully Federally Funded or paid from SACS Functions 7120, 7190, 7200-7600, 7700, 8100-8400 and 8700.



SMAA Funding

**Participating in RMTS and meeting program compliance is the "only" requirement to receive reimbursement.
SMAA Invoices – 4 per FY**

- Medical Eligibility Rate
- Indirect Cost Rate
- Number of TSPs (Time Survey Participants AKA LEA Employees)
- Salary and Benefits of TSPs
- Billable Coded Moments



CYBHI Resources

- CalHHS [CYBHI Website](#)
- CalHHS [CYBHI 2023: Implementing the Vision](#)
- CYBHI [Youth at the Center Report](#)
- CYBHI [California's Children and Youth Behavioral Health Ecosystem](#)



School-Linked Partnership and Capacity Grant

		2024				2025		2026	
DELIVERABLES		APRIL	MAY	JUNE	OCT	JAN	JULY	JAN	JULY
PREPARATION	LEA Interest Survey	Ongoing through May 9							
	LEA Informational Webinar	✓ April 10	✓ May 2						
	LEA Office Hours		✓ May 6						
	COE Baseline Survey		✓ May 10						
	LEA Baseline Survey		May 31						
	COE MOU with SCCOE 10% Allocated			June 3					
IMPLEMENTATION	COE Implementation Plan 50% Allocated			June 10-Sept 10					
	LEA MOU with COE			June TBD					
	LEA Implementation Plan			60 days from COE Implementation Plan					
REPORTING	COE Progress Report 1 15% Allocated					Jan 31			
	CEO/LEA Progress Report 2 15% Allocated						July 31		
	CEO/LEA Progress Report 3							Jan 30	
	COE/LEA Final Report 10% Allocated								July 31

DHCS COE Permissible Use of Funds

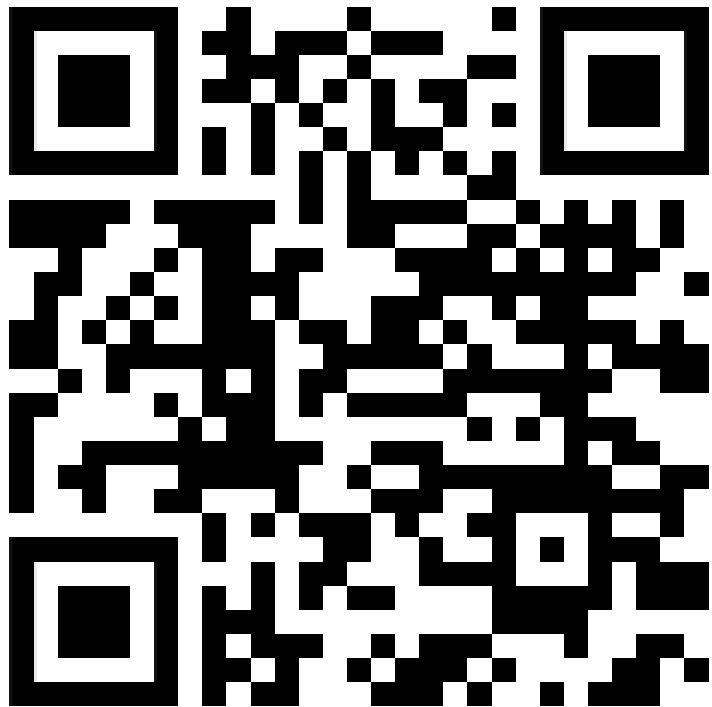


The image features a vibrant orange background with abstract geometric shapes in shades of teal and yellow. The text 'Q&A' is centered in a bold, white, sans-serif font. The shapes are layered, with some appearing as large, overlapping triangles and others as smaller, more complex polygons. The overall aesthetic is modern and clean.

Q&A

Contact Us

<https://www.livebinders.com/b/3590325>



- farrah.northcott@sbcss.net
- james.soward@sbcss.net
- rebekah.smith@sbcss.net





Game On!

Southern Region Student Wellness Conference

Build, Benefit, Belong

July 8 - 10, 2024 | Disneyland Hotel Conference Center



Registration now open!
srswc.org