



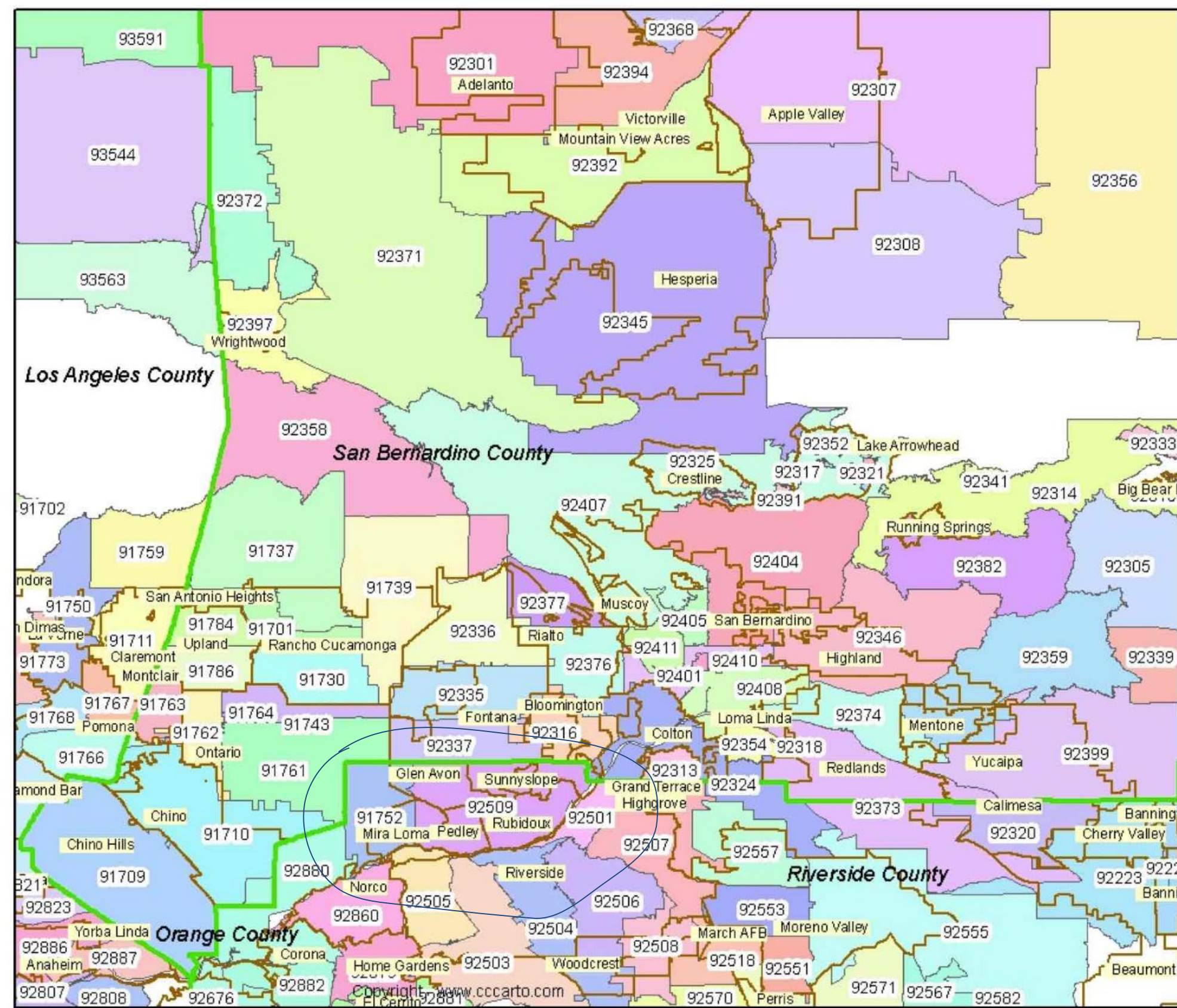
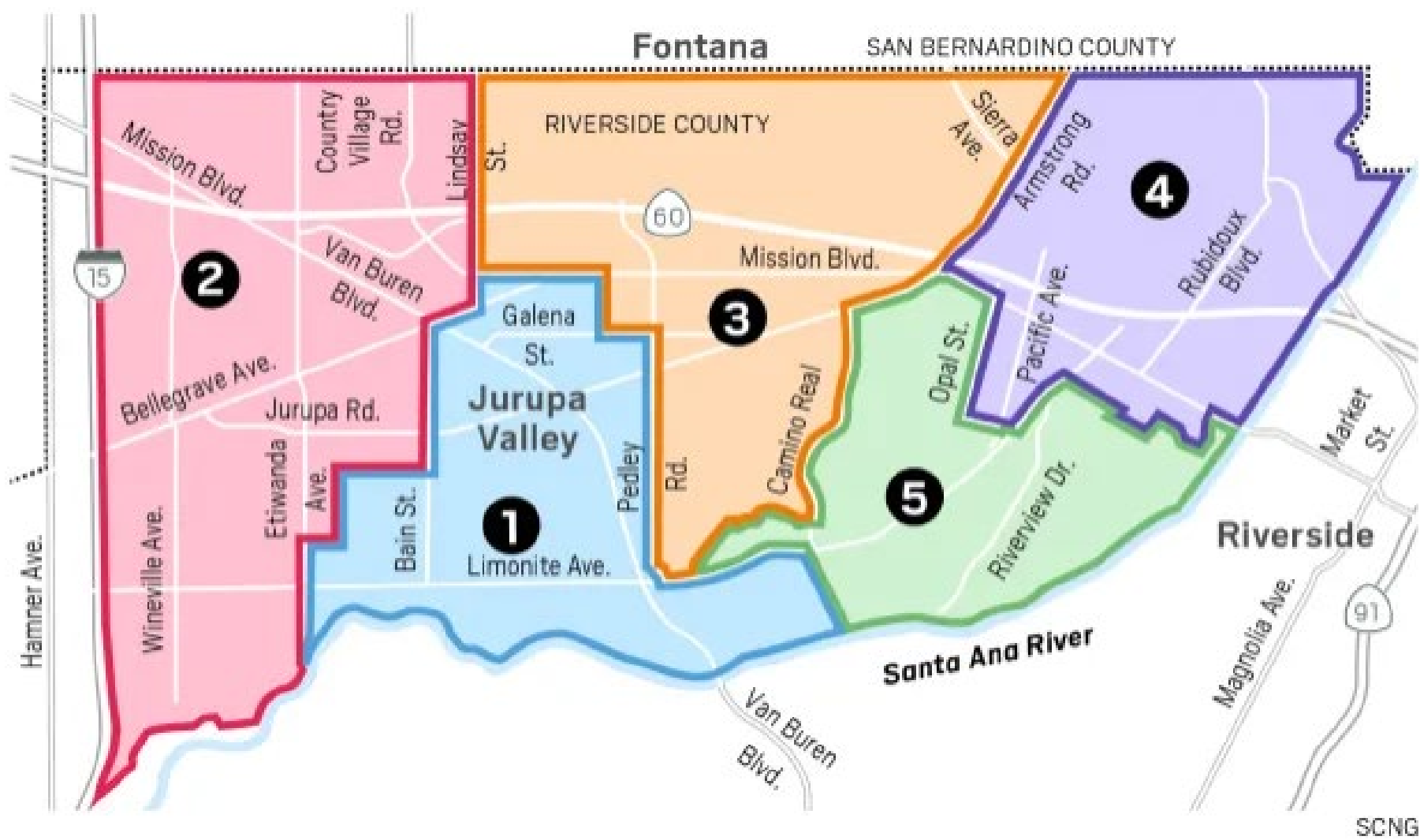
Inland Empire School Health Coalition

May 10, 2024

Jose Campos, Director
Laisa Jamison, Behavioral Health Clinical
Supervisor



Jurupa Valley

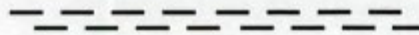




 CALIFORNIA'S
YOUNGEST CITY
Incorporated July 1, 2011

 **44** square miles

 **5 MILES**
from Ontario
International
Airport



ADJACENT TO I-15 & SR-60 TRANSPORTATION CORRIDORS

Who We Are



POPULATION
105,053



SEX

- » Male – 51%
- » Female – 49%

MEDIAN AGE >>> 31.8

 **3,060 VETERANS**

Hispanic 71.4%

White 19.7%

Asian 4.3%

Black 3.1%

American Indian 0.9%

Other 0.6%



How We Live

24,829
HOUSEHOLDS

- » Average Household Size – 4.26
- » Owner-occupied – 68.9%
- » Family Households – 83%
- » Approved Residential Units – 5,320



How We Learn

→ **SCHOOLS**

- » 4 Public High Schools
- » 3 Public Middle Schools
- » 17 Public Elementary Schools



→ **HIGHER EDUCATION**

- » 4 Miles to California Baptist University
- » 5 Miles to University of California, Riverside
- » 10 Miles to La Sierra University

Municipalities:

- Jurupa Unified School District
- Rubidoux District
- Santa Ana Water District
- Jurupa Water District (operates parks in neighboring city of Eastvale)
- Jurupa Area Recreation & Park District
- City of Jurupa Valley

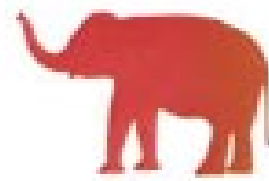
Things to Do



4 GOLF COURSES



GALLEANO WINERY

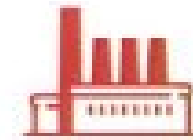


*Jurupa Valley
Discovery
Center*

- » *Skateboard Park*
- » *Flabob Airport*
- » *Cove Waterpark*
- » *2 Dog Parks*
- » *2 Community Gardens*

Projects in Development Pipeline

**5.5 MILLION SQUARE-
FEET INDUSTRIAL**



1 Million Square-Foot Commercial



**1,126
RESIDENTIAL UNITS**

Jurupa Unified School District

18,370 Enrollment

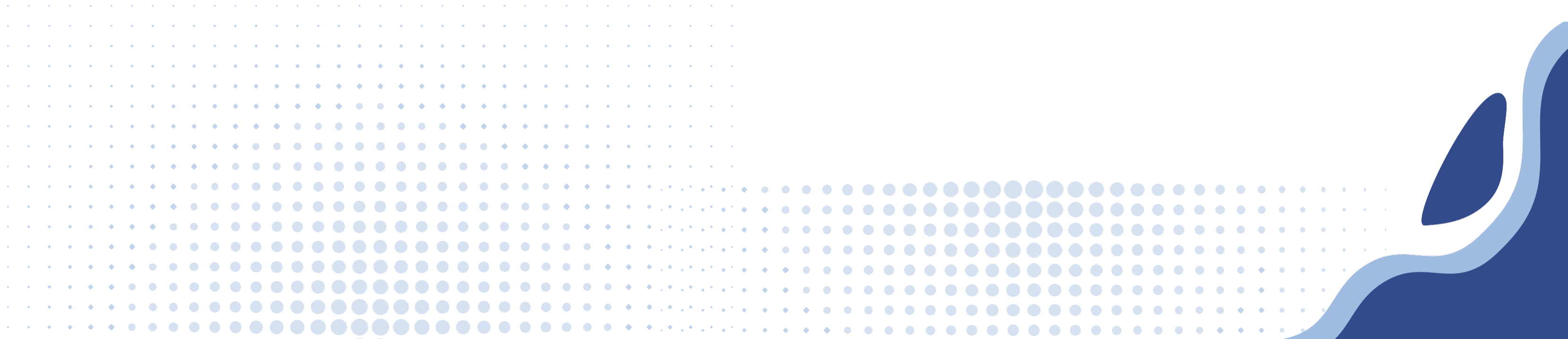
- 86.5% Hispanic / Latino
- 6.9% White
- 2% African American
- 1.6% Asian
- 1.3% Not Reported
- .8% Two or More Races
- .6% Filipino
- .2% American Indian or Alaskan Native
- .2% Pacific Islander

Riverside County (23 LEAS)

- 422,804 Enrollment
- 66.6% Hispanic / Latino
- 17.1% White
- 5.7% African American
- 3.5% Asian
- 3.6% Two or More Races
- 1.9% Filipino
- 1% Not Reported
- .4% American Indian or Alaskan Native
- .3% Pacific Islander

Jurupa Unified School District

- Under 63% Medi-Cal Enrollment
- 79% Socioeconomically disadvantaged
- 77.5% NSLP (Free / Reduced Lunch)
- 29.6% English Learners
- .7% Foster
- .5 Homeless (McKinney Vento)
- 12.3% Students with disabilities (Special Education)



Integrated Student Supports



A dedicated staff member coordinates support programs to address out-of-school learning barriers for students and families.

Mental and physical health services support student success.



Integrated Student Supports



Physical Health

Neighborhood Health Mobile Dental

RUHS - Public Health Mobile Unit

RUHS - Vaccination Team

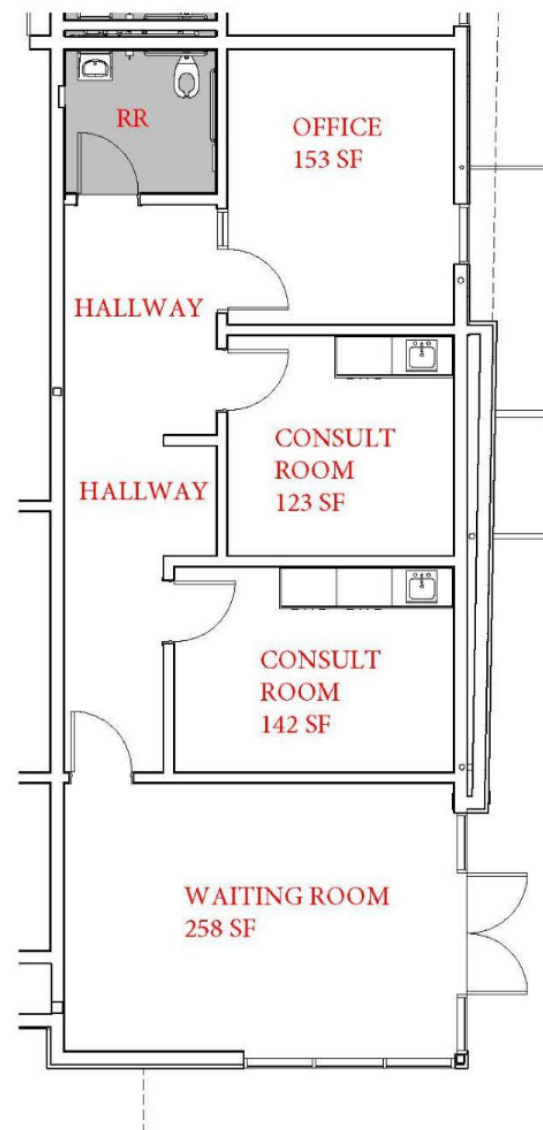
Community Health Systems Mobile Unit

Coming Soon: Volta Health

*Access to care, sports physicals, dental, immunizations



Integrated Student Supports



Physical Health

RUHS - Public Health Intermittent Clinic

Location: Troth Street Elementary

Open: Fall 2024

*Previous Clinic was operated by Borrego for nearly a decade and closed in 2021.

Integrated Student Supports

- Professional Development
- Classroom Presentations
- Coordination of Services
 - Wellness Centers and Calming Corners
- Tiered Level of Supports / Other Means of Correction
- Student Voice
- Sustainability



Integrated Student Supports

- Professional Development
- Classroom Presentations
- Coordination of Services
 - Wellness Centers and Calming Corners
- Tiered Level of Supports / Other Means of Correction
- Student Voice
- Sustainability



Professional Development Wellness Centers / Coordinated Services Team



May / June 2023 trained secondary sites on Coordination of Services Team “COST” Meetings to work collaboratively and provide the appropriate intervention / support at the right time. This included outreach and working with ASBs, group services, contract services, re-entry meetings, mentoring, youth court services, etc.

July 2023 and ongoing: COST meetings and technical support to continue to develop the structure and supports.

Wellness Centers

2022-23: RHS

2023-24: MMS, MLMS, JVHS.

Pending: JMS, PHS



Wellness Centers

Systems of
Support



Professional Development Wellness Centers / Coordinated Services Team

Wellness Centers

1. Where Services are offered for students at secondary schools
2. Where partner agencies provide services
3. Where staff engage with students
 1. Wellness Wednesday (open for activities and games)
 2. Thrifting Thursday (closet is open to students for thrifting)
4. Where we provide student check-ins for supporting self-regulation.
 1. “The nurse’s office for behavioral health needs”
 2. High Crisis support is also provide (maximum of three check-ins before formal consent and services need to be provided by our clinician).



Classroom / School Presentations

Let's Talk About Boundaries



Professional Development

Calming Corners - Highlight

Helps students develop skills in the area of self-regulation

Teaches students:

Vocabulary of emotional terms - Common language

Recognize their own emotions

Detect the emotions of others

Triggers

How others may interpret their behavior

Problem solving skills

Healthy coping and regulation strategies

Pilot:

5 Schools





51 Teachers.

District Wide:

Dec. 5th - 42 teachers enrolled

April / May - TBA

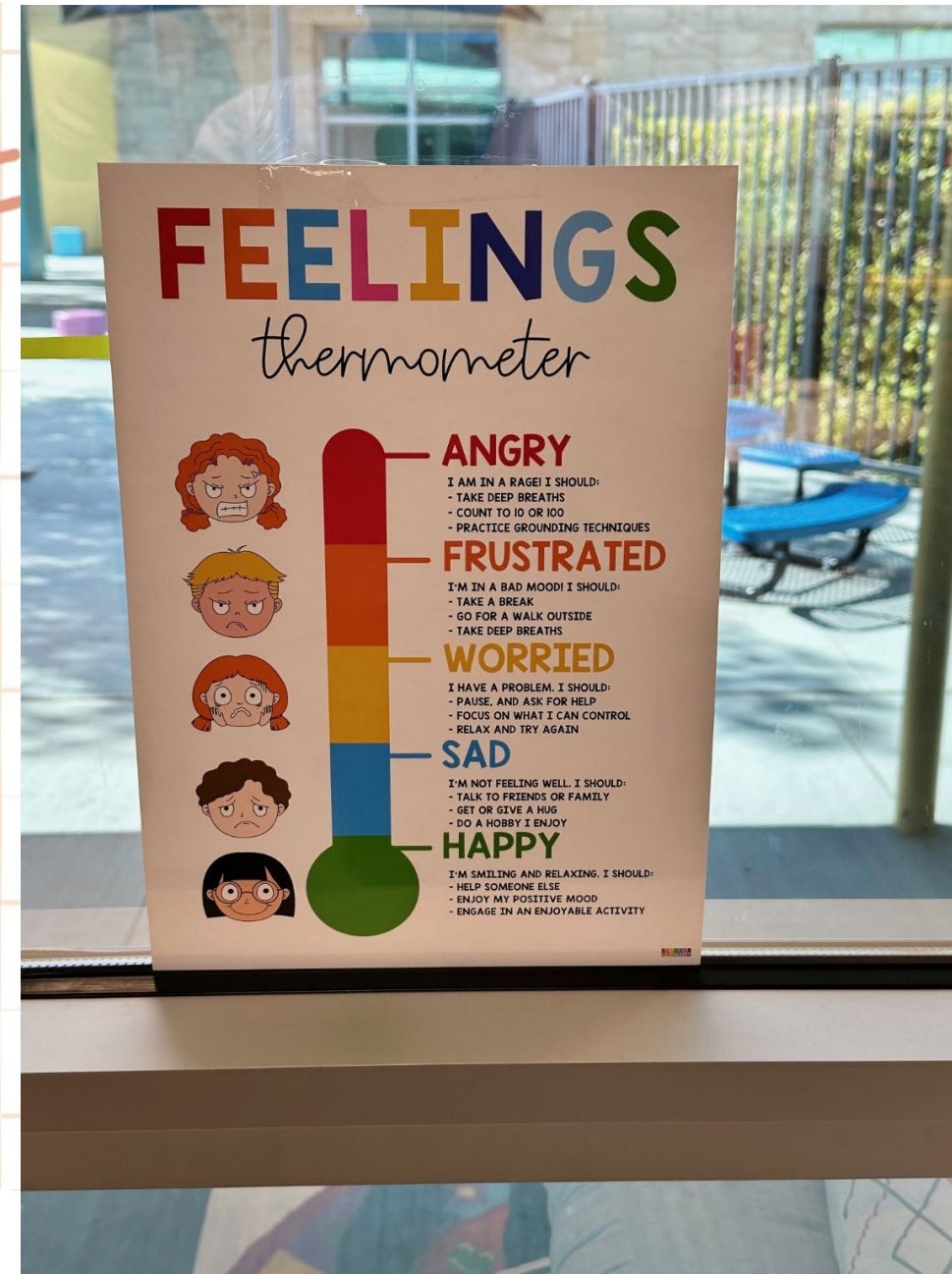
The **ZONES** of Regulation®

			
BLUE ZONE Sad Sick Tired Bored Moving Slowly	GREEN ZONE Happy Calm Feeling Okay Focused Ready to Learn	YELLOW ZONE Frustrated Worried Silly/Wiggly Excited Loss of Some Control	RED ZONE Mad/Angry Terrified Yelling/Hitting Elated Out of Control

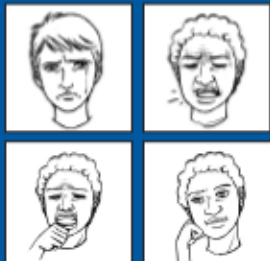


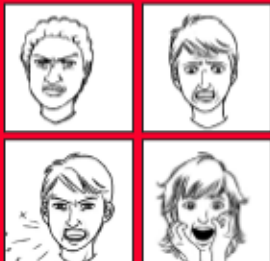


Professional Development

Calming Corners - Highlight

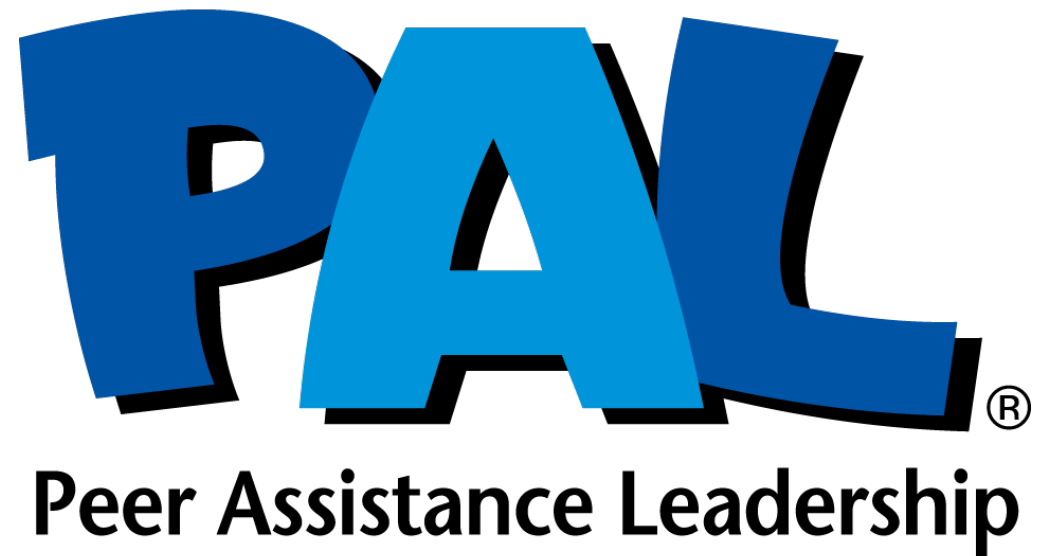


The **ZONES** of Regulation®

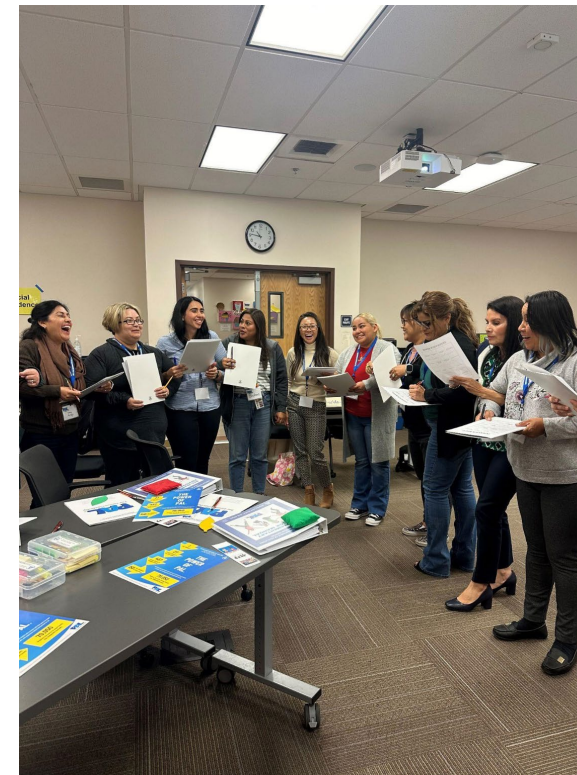
			
BLUE ZONE Sad Sick Tired Bored Moving Slowly	GREEN ZONE Happy Calm Feeling Okay Focused Ready to Learn	YELLOW ZONE Frustrated Worried Silly/Wiggly Excited Loss of Some Control	RED ZONE Mad/Angry Terrified Yelling/Hitting Elated Out of Control



Student Voice Peer Assistance Leadership



Rubidoux High School: Pilot classroom
Elementary Training: Dec. 7-8: 13 Certified participants
Mira Loma Middle: WEB "Where Everyone Belongs"
summer training and new advisory.



MTSS Direct Services Provided

Tier 1

- Presentations / Professional Dev.
 - Calming Corners
 - Trust Based Relational Intervention
 - Restorative Practices
 - What is Mental Health
 - Self-Awareness for Teachers
 - Wellness Toolkit
 - Empowerment
- Monthly Newsletters (Wellness Centers)
- Suicide Prevention Month
- Outreach Events
 - Parent Teacher Conference
 - Community Events such as Trunk o Treat & Other Events

Data

- 30 Presentations

Tier 2

- Small groups
 - Seeking Safety
 - Why Try
 - Social Skills
 - Relational Aggression
 - Substance Use
 - Self Care
 - Empowerment
 - Stress Management
- Check-Ins at primary sites
- Lunch groups such as
 - Therapeutic Tuesdays
 - Wellness Wednesdays
- Wellness Center Check-Ins at secondary sites (COST Referrals)
- Thrifting Events, clothing assistance
- IEP and 504 meetings

Data

- Over 2,500 PICO Visit Entries in Q, 1238 unduplicated students
- 19 Groups so far in 23/24 academic year

Tier 3

- Individual counseling and case management
- Collateral with parents and school personnel
- Crisis Intervention/Risk Assessments
- SART meeting
- SARB meeting
- Family Needs Assessment

Data

- 490 students being served as of 4/08
 - 416 Specialty Mental Health
 - 74 Student Assistance Program
 - Short Term - no reimbursement
- 698,601 minutes of direct services from 7/1/23-11/30/23
- 1278 requests for individual services since 7/31/23
- 273 family needs assessments completed



Integrated Student Supports

New / Expanded supports this year

- Substance Abuse Prevention and Treatment
- More intense Behavioral Supports (ICC/IHBS)
- Substance use groups / OMC: 8,736 minutes of service.



Successes from Integrated Supports

- Services for All
- Increase site level collaboration & coordination
- Other Means of Correction

Behavioral Health Staff



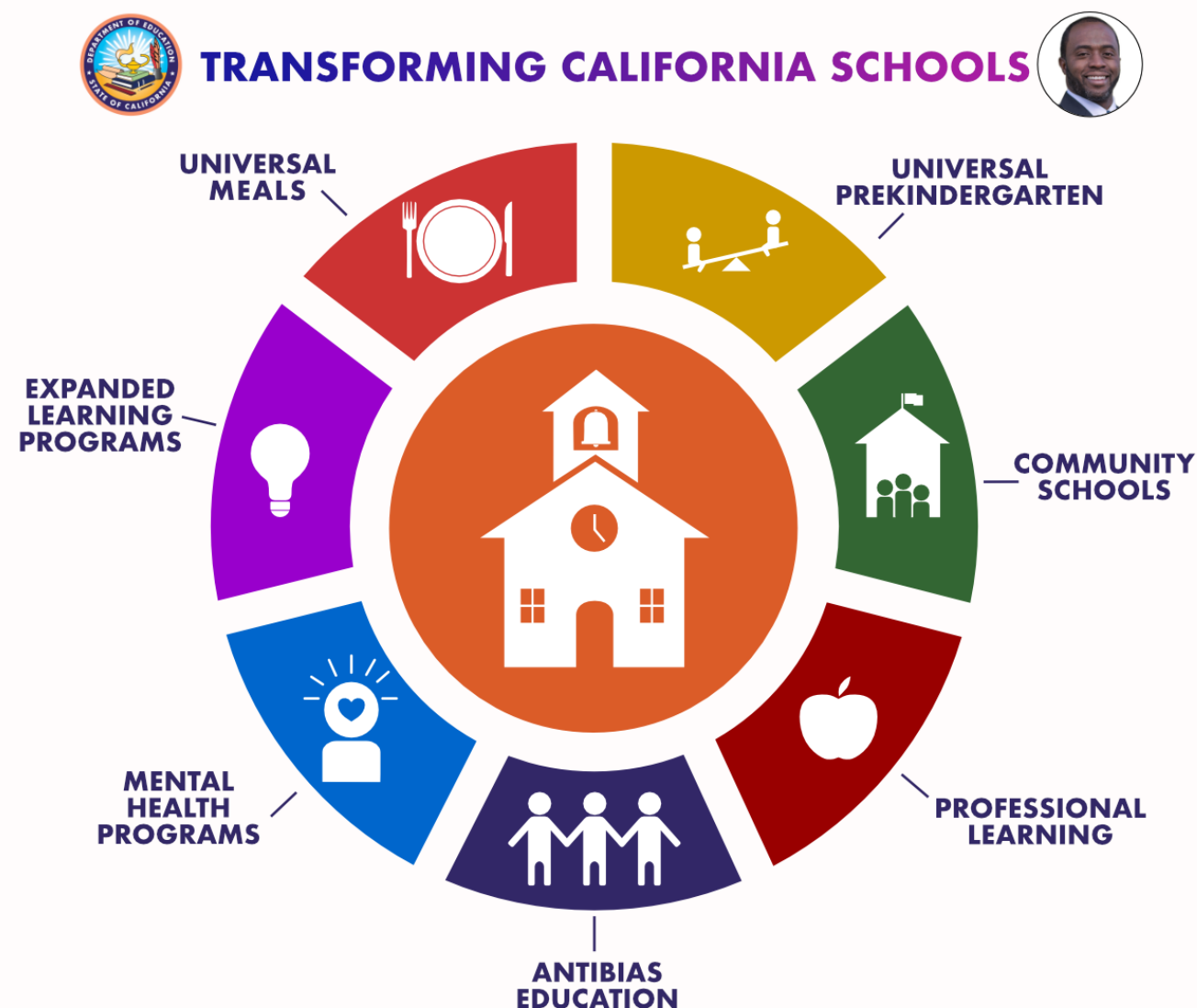
- 22 Direct Service Clinicians
- 8 Behavioral Health Peer Specialist (Youth)
- 1 Behavioral Health Peer Specialist (Parent)
- 1 Behavioral Health Peer Specialist II
- 17 interns
- 2 Clinical Supervisors
- 3 office support staff
- 1 Director
- 4 contract provider clinicians

24/25

- Adding four more positions.

Sustainability

- Six Different Funding Streams (none are associated with Prop. 98)
 - Medi-Cal Billing- Specialty Mental Health
 - Uncapped based on reimbursement
- Children Youth Behavioral Health Initiative (CYBHI)
 - We anticipate more requests for services from families with commercial insurance
 - Uncapped based on reimbursement
- Managed Care
 - IEHP contracts
 - Collaboration / Health Navigator partially executed.
 - Direct Service
 - In conversations



New Role Under CYBHI

Certified Wellness Coaches in Tiered Support

Tier 3

- Support School Counselors
- Crisis referral
- Care coordination

Tier 2

- Check In / Check Out
- Assist in identifying students with Tier III needs
- Life skills (e.g., stress management, time management, problem-solving)
- Assist or lead group interventions/activities that do not require PPS-C or licensure

Tier 1

- Support Universal Screening tools
- Teach and reinforce classroom social, emotional, behavioral lessons under guidance of mental health or PPS staff
- School-wide Bully-Prevention Programs such as Stop, Walk, and Talk
- Provide mental health and wellness information across campus in the forms of visuals, posters, flyers, and more...
- Assist in identifying students with Tier II needs
- Deliver structured curriculum to groups or classrooms, focusing on wellness promotion and education such building positive relationships, bullying prevention, nutrition, and exercise in relation to behavioral health



Systems of
Support



Thank You Questions?

Jose Campos
jose_campos@jUSD.k12.ca.us
(951)360-4175