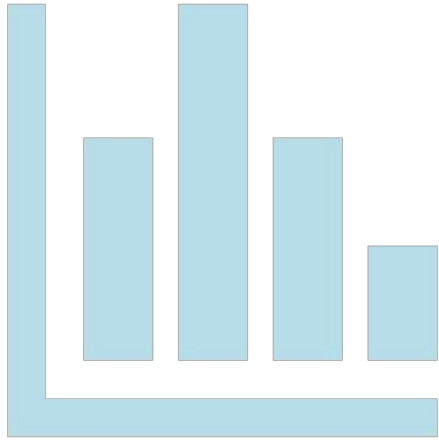


Breakout Groups

- Breakout 1: Modoc, Lassen, Plumas, Sierra, Nevada, Placer, El Dorado
- Breakout 2: Siskiyou, Shasta, Tehama, Glenn, Butte, Colusa, Yuba, Sutter
- Breakout 3: Mendocino, Humboldt, Del Norte, Lake, Trinity

CYBHI FEE SCHEDULE & CERTIFIED WELLNESS COACHES





POLL:

How much do you know about the CYBHI
Fee Schedule Program ?

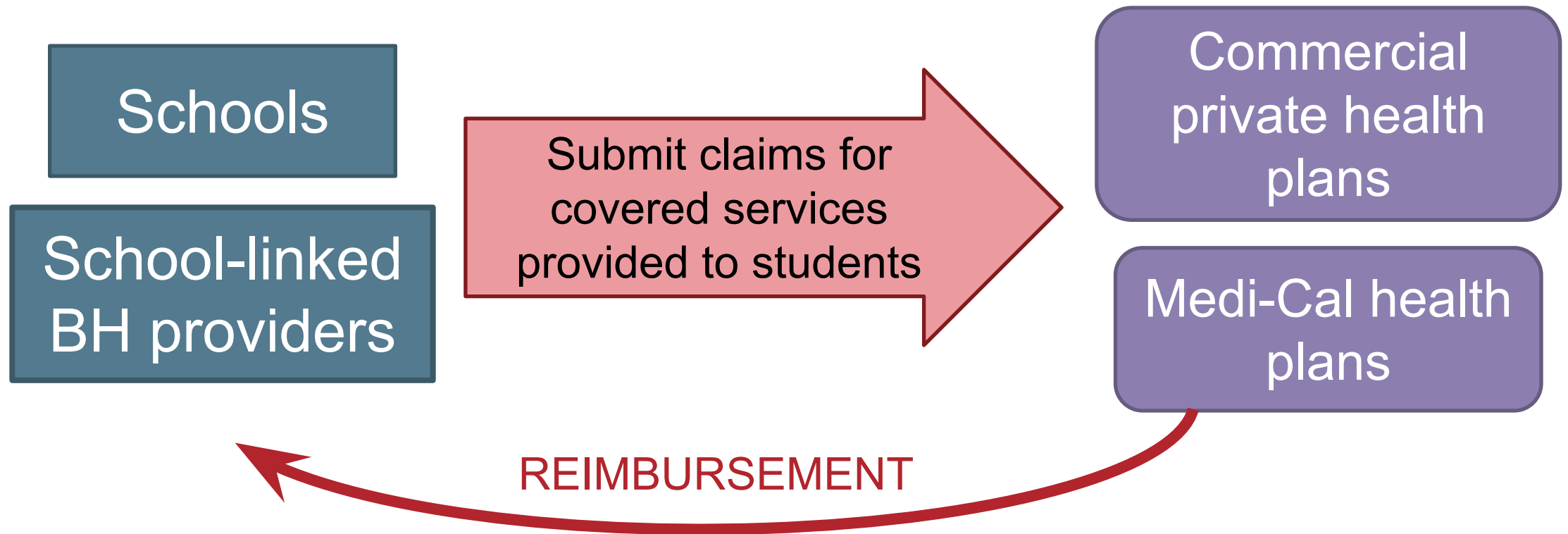
🍏🍏🍏 A LOT

🍏🍏 SOME

🍏 VERY LITTLE

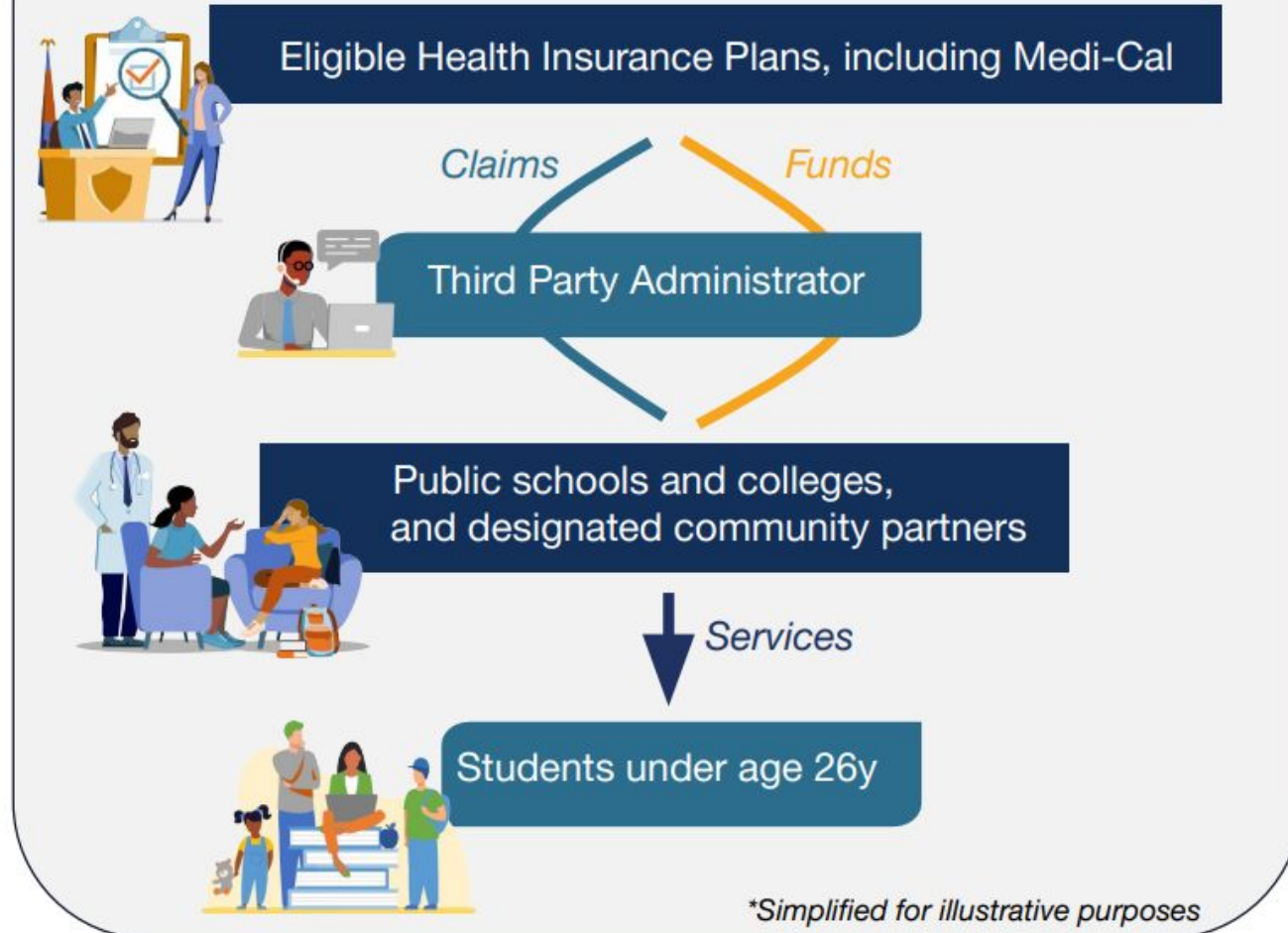
STATEWIDE ALL-PAYER FEE SCHEDULE

- Establishes a set of school-based behavioral health services that all health plans must reimburse for.



Expanding Access to Care in Schools: CYBHI Fee Schedule Program

What is the Fee Schedule program?*



- The program creates a sustainable reimbursement pathway to receive funding for certain behavioral health services rendered at a school or school-linked site.
- Families will not pay out-of-pocket expenses.
- As of January 2025, more than almost 500 Local Educational Agencies (LEAs) and public institutions of higher education (IHEs) from 48 counties have joined the first 4 cohorts of the program.
- Participating schools represent 45% of all TK-12 public school students, and 64% of all students eligible for Free and Reduced Price Meals

LEA BOP

VS

**Multi-Payer
Fee Schedule**

FEATURES	LEA BOP	FEE SCHEDULE
Reimbursement for mental health services	✓	✓
Reimbursement for physical health services	✓	✗
Reimbursement for Medi-Cal insured students	✓	✓
Reimbursement for commercially insured students	✗	✓
Authorized providers include PPS credentialed staff	✓	✓
Reimbursement for expanded behavioral health services including group therapy	✗	✓

All providers and practitioners must have a National Provider Identifier (NPI) and be Medi-Cal enrolled



[DHCS Guidance for the Participation of Community Providers](#)

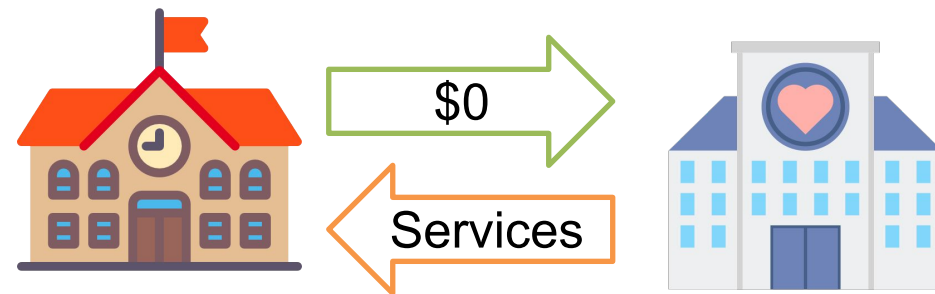
COMMUNITY PARTNERS AS DESIGNATED PROVIDERS

LEA must include the partner in a roster of designated providers and practitioners.

EMBEDDED PROVIDERS OR PRACTITIONERS

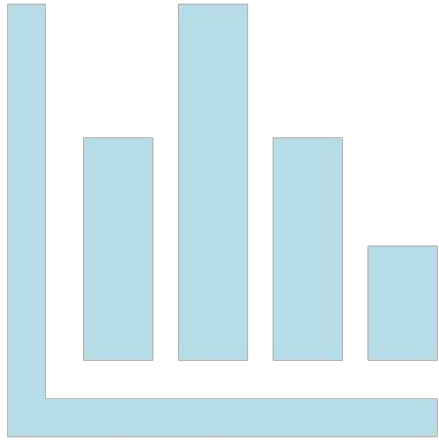


AFFILIATED PROVIDERS OR PRACTITIONERS



STATE-WIDE AFFILIATED PROVIDERS





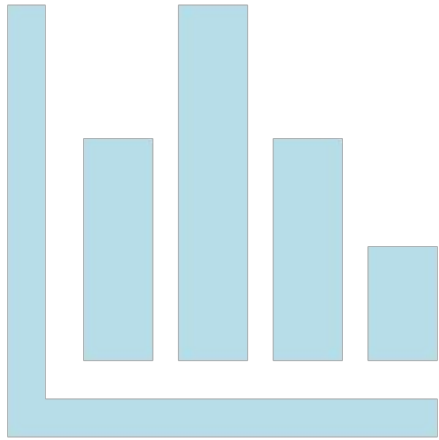
POLL:

How much do you know about the Certified Wellness Coaches?

🍏🍏🍏 A LOT

🍏🍏 SOME

🍏 VERY LITTLE



ANONYMOUS POLL:

What aspect of Wellness Coaches are you most interested in?

🍏 **Roles of Wellness Coaches**

🍏 **Training/Supervision**

🍏 **Wellness Center support**

🍏 **CWCs in the Field**

🍏 **Sustainability/Funding**

🍏 **Hmmm, not sure!**



The Vision and Purpose of Wellness Coaches

Improve the behavioral health and well-being of children and youth through age 25 by creating a type of provider that can support children's social and emotional development and provide appropriate referral services in the settings that reach all children

Sustainability via the CYBHI fee schedule

Procedure code	Service description	Reimbursement Rate
0591T	Health and well-being coaching, face to face, individual initial assessment	\$66.24
0592T	Health and well-being coaching, face to face, individual, follow-up session, at least 30 minutes	\$41.08
0593T	Health and well-being coaching, face to face; group (2 or more individuals) at least 30 minutes	\$12.45

Minimum Education Level Required		Illustrative Behavioral Health Lattice with Example Behavioral Health Roles			
Supervised Professional	Certificate	Other non-BH roles	Community health worker	Peer support	SUD counselor
	Associates	Certified Wellness Coach I			
	Bachelors	Certified Wellness Coach II	Social worker		
	Masters	School counselor, school psychologist, social worker, or individuals working towards licensure (incl. PPS)			
Independent Practitioner	Licensure	Licensed clinicians, school nurse, pupil personnel services			
	PhD	Psychologist (incl. PPS)			
	MD	Psychiatrist, primary care providers			

Behavioral Health Career Lattice

Select Observations

- The Certified Wellness Coach role is designed to be an additional opportunity in the lattice, **bridging the gap between roles** with minimum to no training to Master's-level training.
- The Certified Wellness Coach role **offers employment and training to those that want to advance their careers** to higher levels of the career lattice.

Services and Competencies of the Certified Wellness Coach

Services

Activities core to the Certified Wellness Coach roles

1 Wellness promotion and education

2 Screening

3 Care coordination and extension

4 Individual support

5 Group support

6 Crisis referral

Additional Competencies

Demonstrated areas of knowledge to be evaluated against during field experience

7 Cultural responsiveness, humility, and mitigating implicit bias

8 Professionalism, ethics, and legal mandates

9 Communication

10 Operating in role and different environments

WHAT DOES THIS LOOK LIKE IN PRACTICE?

Wellness Promotion and Education

- ◆ Classroom wellness presentations
- ◆ Lead campus wellness activities
- ◆ Promote activities to address mental health stigma
- ◆ Build rapport with students, staff, and parents schoolwide
- ◆ Wellness champion on campus and in SBHC/WC with school-wide visibility



WHAT DOES THIS LOOK LIKE IN PRACTICE?



Screening

- ◆ Support implementation of universal mental health/wellness student screening
- ◆ Targeted screening
- ◆ Triage students
- ◆ Develop school-wide wellness promotion activities based on screening data

WHAT DOES THIS LOOK LIKE IN PRACTICE?

Care coordination and extension

- ◆ Case management in coordination with clinical staff
- ◆ Navigate needed external referrals
- ◆ Liaise with school staff/SBHC staff re: specific student need
- ◆ Participate in coordination of Services Team meetings
- ◆ Develop strong relationships with partners
- ◆ Provide student advocacy in accessing needed support.



WHAT DOES THIS LOOK LIKE IN PRACTICE?



Individual support

- ◇ Check-in and check-out
- ◇ Support student individually
- ◇ Provide emotional support
- ◇ Assess basic needs (SDOH)
- ◇ Monitor student participation
- ◇ Conduct Motivational Interviewing to support stages of change

WHAT DOES THIS LOOK LIKE IN PRACTICE?

Group Support

- ◆ Coordinate and lead non-clinical skill-building groups
- ◆ Lead or co-lead culturally-specific or gender specific groups
- ◆ Partner with clinical staff to support therapeutic groups
- ◆ Support and co-facilitate school peer-to-peer programs
- ◆ Facilitate restorative justice circles
- ◆ Mental Health Club or Youth Advisory Board lead
- ◆ Oversee student workers in SBHC/Wellness Centers



WHAT DOES THIS LOOK LIKE IN PRACTICE?



Crisis Referral

- ◆ Participate as part of school's crisis response team
- ◆ Participate in post-vention activities following a school tragedy
- ◆ Promote and coordinate school-wide healing activities and culture building
- ◆ Trained in Youth Mental Health First Aid
- ◆ Trained in QPR for crisis intervention (Question, Persuade, Refer)

Certification Requirements – Education Pathway

	Wellness Coach I	Wellness Coach II
Prerequisites to Enter Program	◆ High school diploma or equivalent	◆ Wellness Coach I certification or Associate's in related field ¹
Degree Required	◆ Associate's degree	◆ Bachelor's degree
Majors Accepted	<ul style="list-style-type: none">○ Social Work○ Human Services○ Addiction Studies○ Psychology	<ul style="list-style-type: none">○ Social Work○ Human Services○ Addiction Studies○ Psychology
Field Experience Needed	◆ 400 hours total (150 hour minimum)	◆ 800 hours total (300 hour minimum) ²

1. Applicants can enter directly into bachelor's degree without listed prerequisites but will be required to complete Wellness Coach I education requirements throughout course of study. 2. Hours from Wellness Coach I certification apply towards total.

Certification Requirements – Workforce Pathway

	Wellness Coach I	Wellness Coach II
Prerequisites to Enter Program	<ul style="list-style-type: none">Professionals who are currently part of the behavioral health workforce	<ul style="list-style-type: none">Professionals who are currently part of the behavioral health workforce
Degree Required		
Majors Accepted	<ul style="list-style-type: none">Associate’s degreeAny Associates Degree	<ul style="list-style-type: none">Bachelor’s degreeAny Associates Degree
Field Experience Needed	<ul style="list-style-type: none">1,350 hours	<ul style="list-style-type: none">2,700 hours

Experience must be providing direct pre-clinical behavioral health services to children and youth through age 25 in school-linked/school-based organizations, non-profits, community organizations, and/or health centers/clinics within the last six years. These services should align with the Certified Wellness Coach scope as necessary for certification.



“The scope of a Certified Wellness Coach is limited to non-clinical supports to students, such as check-ins, case management, and connection to counseling when indicated.”

CONSIDERATIONS FOR EMPLOYERS

ADMINISTRATIVE

What kind of organizations can hire Certified Wellness Coaches?

What similar school staff roles already exist?

Do clinical staff currently work at the top of their scope?

What PPS Credentialed and Licensed Clinicians could supervise Wellness Coaches?

SCHOOL CULTURE AND SUPPORT

What prevention and early intervention dreams do you have?

What non-clinical roles could support positive school climate and culture, peer-to-peer programs, restorative justice?

How well do staff reflect the school community in lived experience, language and culture?

OPPORTUNITIES



- ◆ Alignment with current roles
- ◆ CWC scholarships
- ◆ Ongoing funding for Tier 1 and Tier 2
- ◆ Maximize clinical time
- ◆ Grow peer-to-peer programs
- ◆ Nurture a School Behavioral Health Pathway

CHALLENGES

- ❖ CWCs not approved by CMS
- ❖ Many CWC activities not within the 4 domains of Fee Schedule billing
- ❖ Supervision structure needed
- ❖ Union review may be needed for changes to or new job descriptions
- ❖ Some highly valued and skilled staff will not meet CWC qualifications
- ❖ CHANGE is hard!





CERTIFIED WELLNESS COACHES IN THE FIELD!



Tehama County



HIGH-NEEDS STUDENTS

Wellness coaches take on youth mental health problem in rural California

Certified professionals tackle high levels of emotional distress and substance use among young people in far-flung communities.

[Article](#)

Butte County



- 10 CWC positions
- All new hires, not internal
- Working to get existing staff certified in order to bill
- ROLES
 - Tier 1 and 2
 - Running Lunch Clubs
 - Individual Check-Ins and Character Strong Groups (SEL)
 - Supporting Universal Screening and Case Management
 - Safe adult



What we are doing:

- CWCs are placed in our Secondary Sites (MS/HS) in our WELLies and 1 at our Family Resources Center
- Focus on student engagement/Direct Service
 - MI and BI-SUD and Acceptance and Inclusion
 - Sources of Strength
 - Empowerment groups
- Training and Onboarding
- Billing through CYBHI-Cohort 2-All Payer Fee Schedule (Hopefully :))



**Eureka City
Schools**

SCCOE Wellness Center Liaisons



- **Coordination and Communication**
- **Program Support**
- **Resource Referral**
- **Data and Record Management**
- **Outreach and Collaboration**
- **Clerical and Logistical Support**

RESOURCES

[Sample Wellness Coach job descriptions](#)

[Certified Wellness Coach website](#)

[CYBHI Overview - CWCs](#)

[CYBHI Fee Schedule Scope of Services](#)



CSHA Youth Board Recruitment

We're looking for youth who are passionate about elevating youth voice, advancing school health across California, and growing as a leader.

Eligibility Requirements:

- Be between 18 and 23 years old (must be 18 years old by August 2025)
- Be a high school graduate by August 2025
- Reside in California for the 2025-26 school year

The deadline to apply is by **May 23rd**



Sowing Seeds Health School-Based Community Health Worker Opportunity

- Opportunity for Sutter, Yuba, Humboldt, Shasta, Placer, Mendocino, Colusa, and Glenn
- Place trained CHWs in public schools
- Provide services regardless of insurance coverage, with a focus on Medi-Cal-enrolled and underserved populations