

**Our Community is
our Mission.**



COMMUNITY
HEALTH
SYSTEMS, INC.



OUR IMPACT

Living Our Mission

25,000 Patients Served

136,000 Patient Visits

Thousands Served in
Backpack, Grocery & Toy Giveaways



Mission

To improve and strengthen the health of our diverse communities by providing compassionate and comprehensive health services.

Vision

To be the provider of choice and trusted community partner in improving the health of the people we serve.

Our Mission. In Action.



Services Offered by CHSI

Family Medicine

Internal Medicine

Pediatric Care

Dental Care
(Including Pediatric)

Women's Health/OB-GYN

Chiropractic Care

Vision Care

**Behavioral Health
& Expanding**

Pharmacy



COMMUNITY
HEALTH
SYSTEMS, INC.

Riverside County

Moreno Valley Family Health Center

22675 Alessandro Blvd, Moreno Valley, CA 92553
(951) 571-2350

University Community Health Center

2933 University Ave, Riverside, CA 92503
(951) 224-8220

Magnolia Community Health Center

9380 Magnolia Ave, Riverside, CA 92503
(951) 373-5620

San Bernardino County

Bloomington Community Health Center

18601 Valley Blvd, Bloomington, CA 92316
(909) 546-7560

Bloomington Family Wellness Center

18651 Valley Blvd, Bloomington, CA 92316
(909) 546-7520

Apple Valley Health Center - Opening Fall 2025

20254 US Highway 18
Apple Valley, CA 92307

San Diego (North County)

Fallbrook Family Health Center

1328 S. Mission Road, Fallbrook, CA 92028
(760) 451-4720

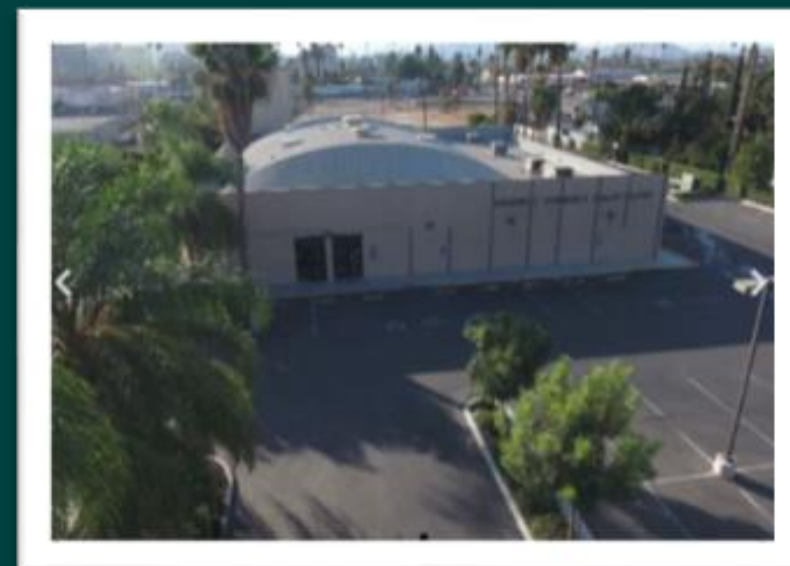
Potter Jr. High - School-Based Health Center

1743 Reche Rd, Fallbrook, CA 92028

Fallbrook Union High - School-Based Health Center

2400 S. Stage Coach Ln, Fallbrook, Ca 92028

Our Locations



Coming to Apple Valley

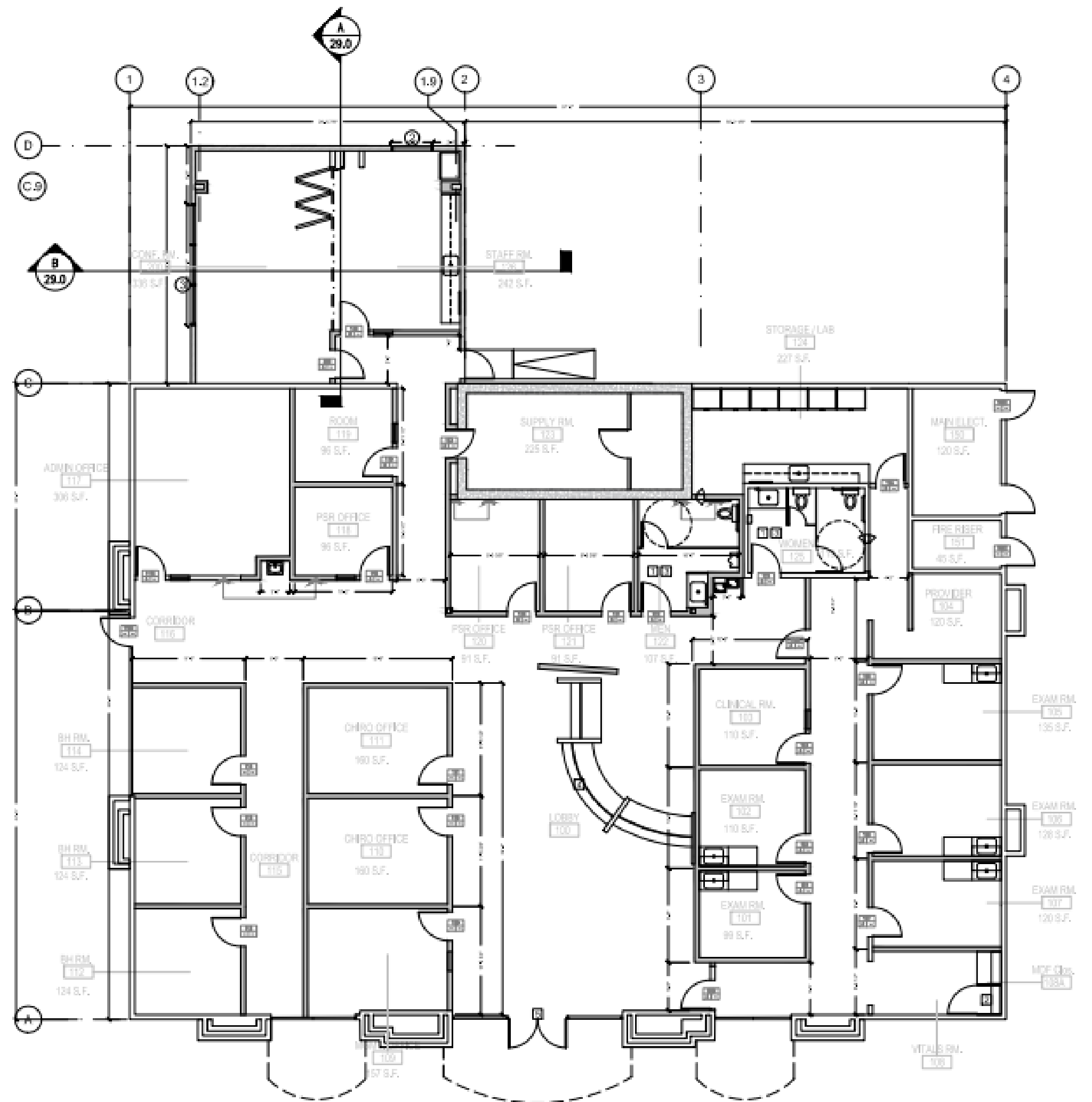


Services:

- Medical/Primary Care
- Behavioral Health
- Chiropractic
- Health Education
- Family Planning
- Teen Wellness
- Immunizations



COMMUNITY
HEALTH
SYSTEMS, INC.



ups
SALLY BEAUTY
LESLIE'S SWIMMING POOL SUPPLIES
PARKWAY DENTAL GROUP

APPLE VALLEY COMMONS
TARGET
OLD NAVY
DOLLAR TREE
ROSS DRESS FOR LESS

FUTURE
Walmart

Starbucks
SUBWAY
Round Table Pizza

PANDA EXPRESS
Carl's Jr.
DEL TACO



BASS HILL RD

US HIGHWAY 18 - 31,137 CPD

School-Based Health

—— On-Campus/In-Person

—— Mobile Units

—— Telehealth

—— Combination



COMMUNITY
HEALTH
SYSTEMS, INC.



Oro Grande School-Based Health Center

Opening in
2026



OG SBHC Planned Services Phase-In

Phase 1

- Site Begins Behavioral Health

Phase 2

- Site Begins Medical

Phase 3

- Full Capacity Used



Stay Updated!

Join our Newsletter



Thank You!

Contact Us:

Angel Acevedo, MBA
Director of Policy
and Business Development
Cell: (951) 269-9493
Email: a.acevedo@chsica.org

Marina Lopez, MBA
Director of Community
Partnerships
and Engagement
Cell: (909) 222-9532
Email: m.lopez@chsica.org